

企业简介 >>>

BENLONG AUTOMATION COMPANY PROFILE

奔龙自动化科技有限公司成立于2008年，以自动化、智能化、机器人、传感器、物联网、MES系统技术为核心，为客户提供智能装备制造及系统集成解决方案的国家级高新技术企业。主营产品有：高低压电器元器件自动化生产线、新能源元器件自动化生产线、充电桩自动化生产线、锂电池自动化拼装生产线、自动化焊接设备等，公司产品远销全国各地，同时出口到东南亚、中东、北非等30多个国家和地区。



Benlong Automation Technology Co., Ltd. was established in 2008, with automation, intelligence, robotics, sensors, Internet of Things, and MES system technology as its core, providing customers with intelligent equipment manufacturing and system integration solutions as a national high-tech enterprise. Our main products include: automated production lines for high and low voltage electrical components, automated production lines for new energy components, automated production lines for charging piles, automated assembly production lines for lithium batteries, automated welding equipment, etc. Our products are exported to various parts of the country and are also exported to more than 30 countries and regions such as Southeast Asia, the Middle East, and North Africa.



<p>2008年 奔龙自动化创业 Benlong Entrepreneurship</p>	<p>80+名 技术专员 technical attache</p>	<p>3+家 战略合作单位 Strategic Partners</p>	<p>2+所 科研院所及大专院校 Research Institutions</p>	<p>30+个 业务遍及国家和地区 Business covers countries and regions</p>
<p>20+家 外贸合作企业 foreign enterprise</p>	<p>28+家 上市公司合作 Listed company cooperation</p>	<p>1200+家 国内公司合作 Cooperative companies</p>	<p>265+个 知识产权 intellectual property</p>	<p>2+个 企业资质 Qualifications</p>

奔龙自动化科技有限公司
Benlong Automation Technology Co., Ltd

SINCE 2008

+86-577-62777062 4008-600-680
E-mail: zzl@benlongkj.cn http://www.benlongkj.com



中文 抖音 English Tik tok WhatsApp



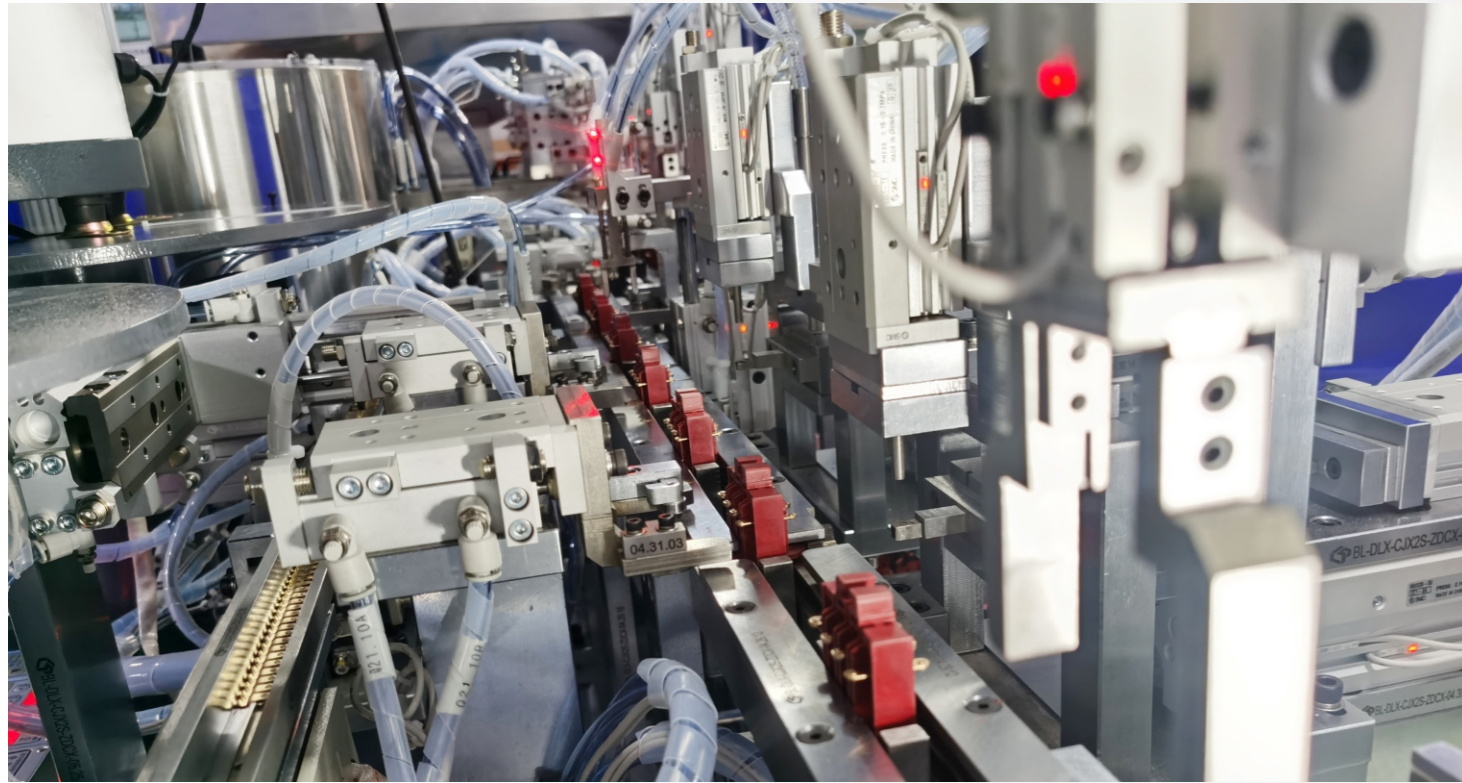
HIGH-END INTELLIGENT EQUIPMENT OVERALL SOLUTIONS
浙江省科学技术进步奖 | 科技人员突出贡献奖 | 专利示范企业
National High tech Enterprise, Zhejiang Provincial Science and Technology Progress Award, Outstanding Contribution Award for Scientific and Technological Personnel, Patent Demonstration Enterprise



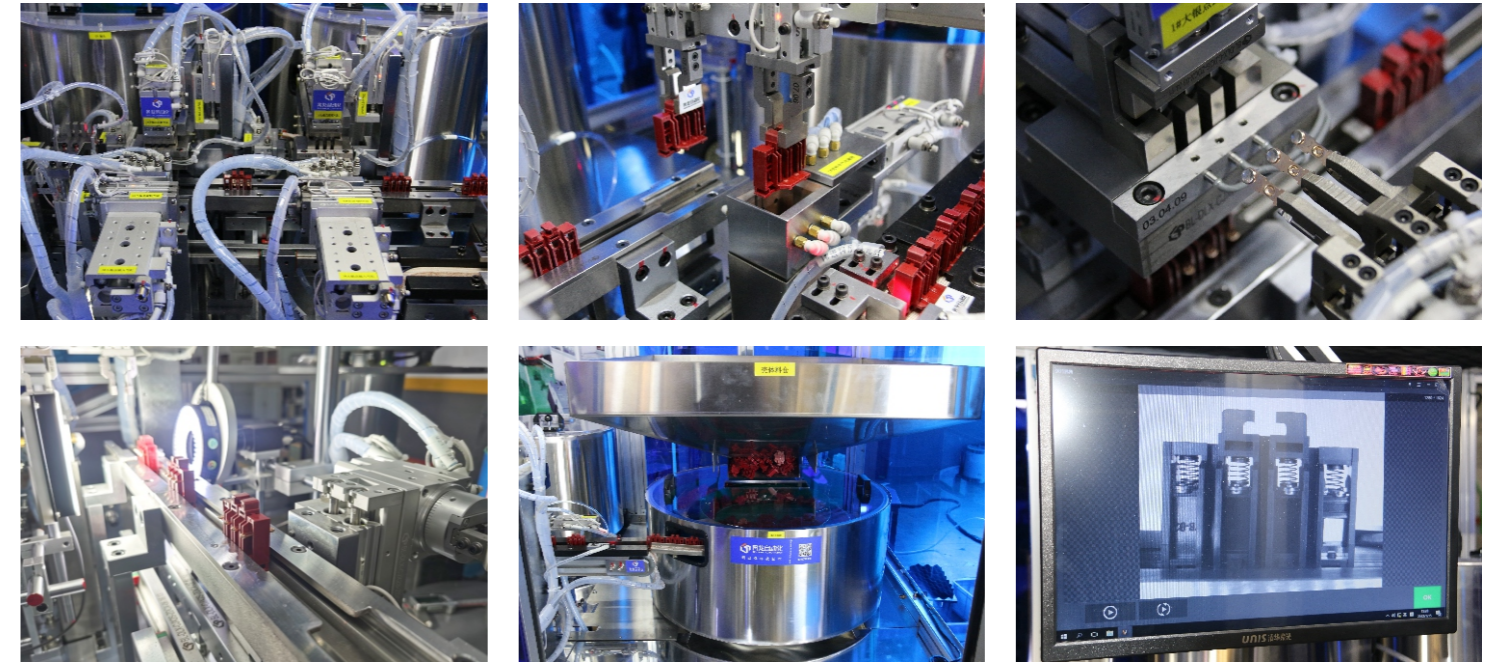
交流接触器自动化装配检测柔性生产线 AC CONTACTOR AUTOMATIC ASSEMBLY AND TESTING FLEXIBLE PRODUCTION LINE

交流接触器自动化装配检测柔性生产线

AC CONTACTOR AUTOMATIC ASSEMBLY AND TESTING FLEXIBLE PRODUCTION LINE



采用多规格混合生产、自动化、信息化、模块化、柔性化、定制化、可视化、一键切换、远程维护设计、预警通知、评估报告、数据采集与处理、全局检测管理、设备全生命周期管理等。
 Using multi-specification mixed production, automation, information technology, modularity, flexibility, customisation, visualisation, one-click switching, remote maintenance design, early warning notification, assessment reports, data collection and processing, global inspection management, full lifecycle management of equipment, etc.



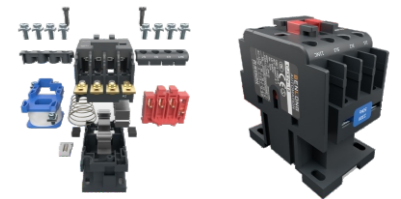
生产线功能介绍 PRODUCTION LINE FUNCTIONS

具有自动上料、插芯装配、底座装配、主辅静触头装配、人工装配宝塔弹簧、锁上下盖螺丝、锁瓦片螺丝、通断、耐压、功耗、前倾吸合、后倾释放、开距、超程、总程、同步性、人工装配前后挡件、移印、激光打标、CCD视觉检测、贴标、喷码、装袋、切袋、热收缩、包装、封箱、捆扎、码垛、AGV物流、缺料满料报警等工序的装配、在线检测、实时监控、质量溯源、条码识别、关键元器件寿命监测、数据存储、MES系统与ERP系统联网、参数任意配方、智慧能源分析与节能管理系统、智能装备服务大数据云平台等功能。

With automatic loading, insert assembly, base assembly, main and auxiliary static contact assembly, manual assembly of pagoda springs, locking upper and lower cover screws, locking tile screws, through and through, pressure resistance, power consumption, forward tilt absorption, backward tilt release, open distance, over-range, total range, synchronization, manual assembly of front and rear blocking parts, pad printing, laser marking, CCD visual inspection, labeling, coding, bagging, bag cutting, heat shrinkage, packaging, sealing, bundling, palletizing, AGV logistics, lack of material full material alarm and other processes of assembly, online detection, real-time monitoring, quality traceability, barcode identification, key component life monitoring, data storage, MES system and ERP system networking, parameters arbitrary formula, intelligent energy analysis and energy saving management system, intelligent equipment services big data cloud platform and other functions.

生产线技术参数 TECHNICAL PARAMETER

- 1、设备输入电压：380V±10%，50Hz；±1Hz
- 2、设备兼容规格：CJX2-0901、0910、1201、1210、1801、1810。
- 3、设备生产节拍：10秒/台。
- 4、不同规格产品可以一键切换或扫码切换均可；切换不同壳架产品需要人工更换或调整模具/夹具，人工更换/调整不同产品配件。
- 5、装配方式：人工装配、自动装配两种可任意选配。
- 6、设备夹具可根据产品型号定做。
- 7、设备具有故障报警、压力监测等报警显示功能。
- 8、中文版和英文版两种操作系统。
- 9、所有核心配件均采用意大利、瑞典、德国、日本、美国、台湾等不同国家和地区的进口配件。
- 10、设备可选配《智慧能源分析与节能管理系统》和《智能装备服务大数据云平台》等功能。
- 11、具有独立的自主知识产权



热销生产线系列 HOT SELLING PRODUCTION LINE SERIES

MCB微型断路器自动化装配检测柔性生产线、物联网智能微型断路器自动化装配检测柔性生产线、漏电断路器自动化装配检测柔性生产线、隔离开关自动化装配检测柔性生产线、电能表外置低压断路器自动化装配检测柔性生产线、MCCB塑壳断路器自动化装配检测柔性生产线、MCCB塑壳计量重合断路器自动化装配检测柔性生产线、**交流接触器自动化装配检测柔性生产线**、ACB框架断路器自动化装配检测柔性生产线、双电源自动转换开关自动化装配检测柔性生产线、浪涌保护器自动化装配检测柔性生产线、NT50断路器自动化装配检测柔性生产线、RT18熔断器自动化装配检测柔性生产线、VS1真空断路器自动化装配检测柔性生产线、墙壁开关自动装配检测柔性生产线、时控开关自动化装配检测柔性生产线、量测开关自动化装配检测柔性生产线、电能表自动化装配检测柔性生产线、锂电池自动化装配检测柔性生产线、充气柜真空断路器自动化装配检测柔性生产线、光伏直流隔离开关自动装配检测柔性生产线、光伏重合闸/直流断路器自动装配检测柔性生产线、信号灯自动化装配检测柔性生产线、交直流充电桩自动化冲压焊接柔性生产线、交直流充电桩自动化装配检测柔性生产线、低压磁控开关自动化装配检测柔性生产线、智能控制柜自动化装配检测柔性生产线、低压电器实验室检测设备、焊接类专用设备、激光应用专用设备、机器人应用专用设备、视觉应用专用设备、物流输送专用设备、自动化装配及专用设备、自动包装设备、MES智能制造生产过程执行系统、智能仓储、

MCB miniature circuit breaker automatic assembly and testing flexible production line, IOT intelligent miniature circuit breaker automatic assembly and testing flexible production line, Leakage circuit breaker automatic assembly and testing flexible production line, Automatic assembly and testing flexible production line for disconnecting switch, Low-voltage circuit breaker automatic assembly and testing flexible production line for external energy meter, MCCB Plastic Case Circuit Breaker Automatic Assembly and Testing Flexible Production Line, MCCB plastic case metering reclosing circuit breaker automatic assembly and testing flexible production line, **AC contactor automatic assembly and testing flexible production line**, ACB frame circuit breaker automatic assembly and testing flexible production line, Automatic assembly and testing flexible production line for double power automatic transfer switch, Surge protector automatic assembly and testing flexible production line, NT50 circuit breaker automatic assembly and testing flexible production line, RT18 fuse automatic assembly and testing flexible production line, VS1 vacuum circuit breaker automatic assembly and testing flexible production line, Wall switch automatic assembly and testing flexible production line, Automatic assembly and testing flexible line for time-controlled switches, Automatic assembly and testing flexible production line for measuring switches, Energy meter automatic assembly and testing flexible production line, Lithium battery automatic assembly and testing line, Automatic assembly and testing flexible production line for vacuum circuit breakers in gas-filled cabinets, Photovoltaic DC disconnecter automatic assembly and testing flexible production line, Photovoltaic reclosing/DC circuit breaker automatic assembly and testing flexible production line, Signal light automatic assembly and testing flexible production line, AC/DC charging pile automatic stamping and welding flexible production line, Automatic assembly and testing flexible production line for AC/DC charging piles, Low-voltage magnetron switch automatic assembly and testing flexible production line, Intelligent control cabinet automatic assembly and testing flexible production line, Low-voltage electrical laboratory testing equipment, Special equipment for welding, special equipment for, Special equipment for laser application, special equipment for, Robot application special equipment, Vision application equipment, Logistics and conveying equipment, Automated assembly and special equipment, Automatic packaging equipment, MES Intelligent Manufacturing Process Execution System, Intelligent Warehousing,