

## 企业简介 >>>

### BENLONG AUTOMATION COMPANY PROFILE

奔龙自动化科技有限公司成立于2008年，以自动化、智能化、机器人、传感器、物联网、MES系统技术为核心，为客户提供智能装备制造及系统集成解决方案的国家级高新技术企业。主营产品有：高低压电器元器件自动化生产线、新能源元器件自动化生产线、充电桩自动化生产线、锂电池自动化拼装生产线、自动化焊接设备等，公司产品远销全国各地，同时出口到东南亚、中东、北非等30多个国家和地区。



Benlong Automation Technology Co., Ltd. was established in 2008, with automation, intelligence, robotics, sensors, Internet of Things, and MES system technology as its core, providing customers with intelligent equipment manufacturing and system integration solutions as a national high-tech enterprise. Our main products include: automated production lines for high and low voltage electrical components, automated production lines for new energy components, automated production lines for charging piles, automated assembly production lines for lithium batteries, automated welding equipment, etc. Our products are exported to various parts of the country and are also exported to more than 30 countries and regions such as Southeast Asia, the Middle East, and North Africa.



<b>2008</b> 年 奔龙自动化创业 Benlong Entrepreneurship	<b>80+</b> 名 技术专员 technical attache	<b>3+</b> 家 战略合作单位 Strategic Partners	<b>2+</b> 所 科研院所及大专院校 Research Institutions	<b>30+</b> 个 业务遍及国家和地区 Business covers countries and regions
<b>20+</b> 家 外贸合作企业 foreign enterprise	<b>28+</b> 家 上市公司合作 Listed company cooperation	<b>1200+</b> 家 国内公司合作 Cooperative companies	<b>265+</b> 个 知识产权 intellectual property	<b>2+</b> 个 企业资质 Qualifications

奔龙自动化科技有限公司  
Benlong Automation Technology Co., Ltd

SINCE 2008

+86-577-62777062 4008-600-680  
E-mail: zzl@benlongkj.cn http://www.benlongkj.com



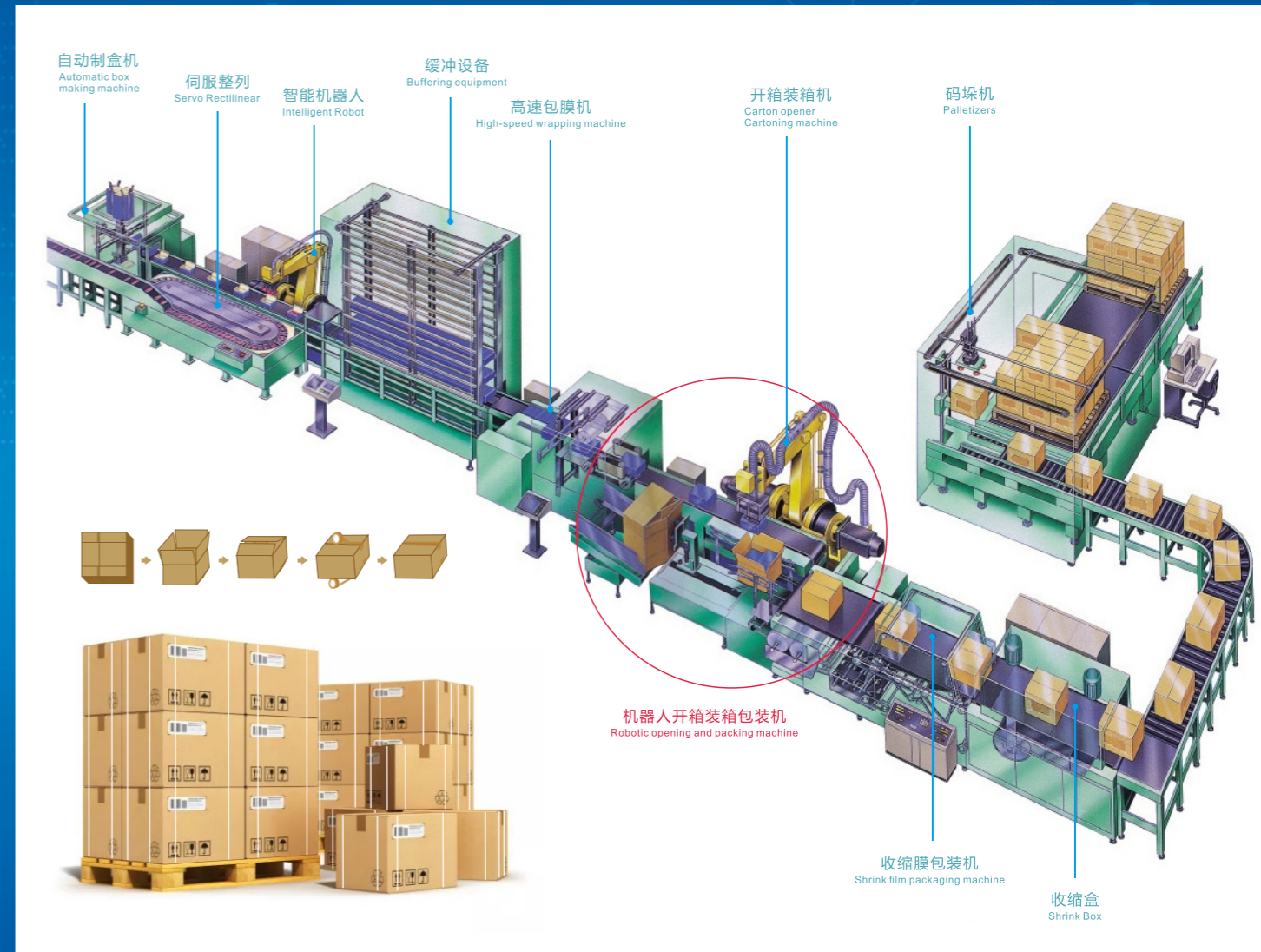
中文 抖音 English Tik tok WhatsApp



## 高端智能装备整体解决方案

HIGH-END INTELLIGENT EQUIPMENT OVERALL SOLUTIONS  
浙江省科学技术进步奖 | 科技人员突出贡献奖 | 专利示范企业

National High tech Enterprise, Zhejiang Provincial Science and Technology Progress Award, Outstanding Contribution Award for Scientific and Technological Personnel, Patent Demonstration Enterprise



# 自动包装设备

## AUTOMATIC PACKAGING EQUIPMENT

自动化生产线 / 设备产品族谱图

AUTOMATED PRODUCTION LINES / EQUIPMENT PRODUCT FAMILY CHART

- 1. MCCB塑壳断路器手工时检测设备等
2. MCCB塑壳断路器手工时检测设备等
3. MCCB塑壳断路器机械寿命检测设备等

- 1. MCB微型断路器磁组件/线圈组件自动焊接设备等
2. MCB微型断路器磁组件/线圈组件自动焊接设备等
3. MCCB塑壳断路器磁组件/线圈组件自动焊接设备等

- 1. 微型断路器自动激光打标设备等
2. 微型断路器自动激光打标设备等
3. 微型断路器自动激光打标设备等

- 1. MCB微型断路器机器人+自动化设备等
2. MCB微型断路器机器人+自动化设备等
3. 物联网智能断路器机器人+自动化检测设备等

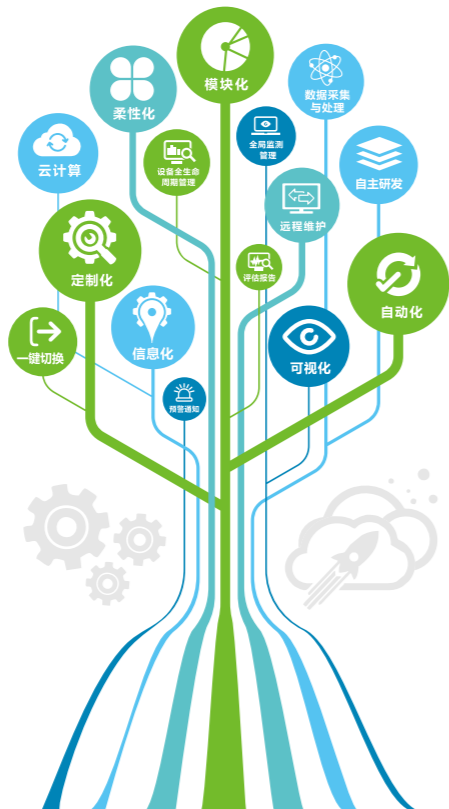
- 1. MCB微型断路器自动装配检测设备等
2. MCB微型断路器自动装配检测设备等
3. MCB微型断路器自动装配检测设备等

- 1. 水平循环输送带设备等
2. 水平循环输送带设备等
3. 螺旋输送机设备等

- 1. 自动装配线骨架+插针设备等
2. GV2电磁线圈组件自动装配设备等
3. 磁环自动检测设备等

- 1. 全自动立式封包机等
2. 全自动立式封包机等
3. 全自动立式封包机等

- MES智能制造过程执行系统 A款
MES智能制造过程执行系统 B款
MES智能制造过程执行系统 C款



高低压电器元件自动化生产线

- 1. MCB微型断路器自动化装配检测柔性生产线
2. MCB微型断路器自动多级拼装设备等
3. MCB微型断路器自动激光打标设备等

- 1. 物联网智能微型断路器自动装配设备等
2. 物联网智能微型断路器自动多级拼装设备等
3. 物联网智能微型断路器自动激光打标设备等

- 1. 漏电断路器自动装配检测柔性生产线
2. 漏电断路器自动激光打标设备等
3. 漏电断路器自动打钉设备等

- 1. 电能量外置低压断路器自动装配设备等
2. 电能量外置低压断路器自动多级拼装设备等
3. 电能量外置低压断路器自动激光打标设备等

- 1. MCCB塑壳断路器自动装配设备等
2. MCCB塑壳断路器自动装配静触头设备等
3. MCCB塑壳断路器自动二三维激光打标设备等

- 1. MCCB塑壳断路器自动装配检测柔性生产线
2. MCCB塑壳断路器自动装配静触头设备等
3. MCCB塑壳断路器自动二三维激光打标设备等

- 1. 交流接触器自动装配检测柔性生产线
2. 交流接触器自动装配静触头组件设备等
3. 交流接触器自动装配底座组件设备等

- 1. 浪涌保护器自动化装配检测柔性生产线
2. 浪涌保护器自动装配设备等
3. 浪涌保护器自动检测设备等

- 1. NT50断路器自动化装配检测柔性生产线
2. NT50断路器自动装配检测设备等
3. NT50断路器自动装配检测设备等

- 1. RT18断路器自动化装配检测柔性生产线
2. RT18断路器自动装配检测设备等
3. RT18断路器自动装配检测设备等

- 1. 漏电开关自动化装配检测柔性生产线
2. 漏电开关自动二三维激光打标设备等
3. 漏电开关自动打钉设备等

# CONTENTS

## 目录

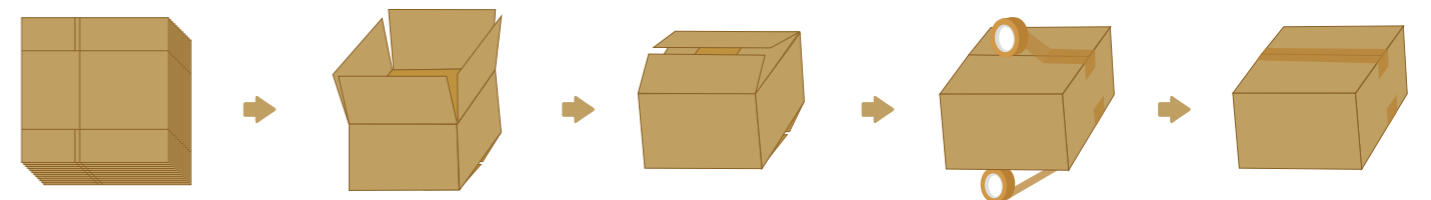
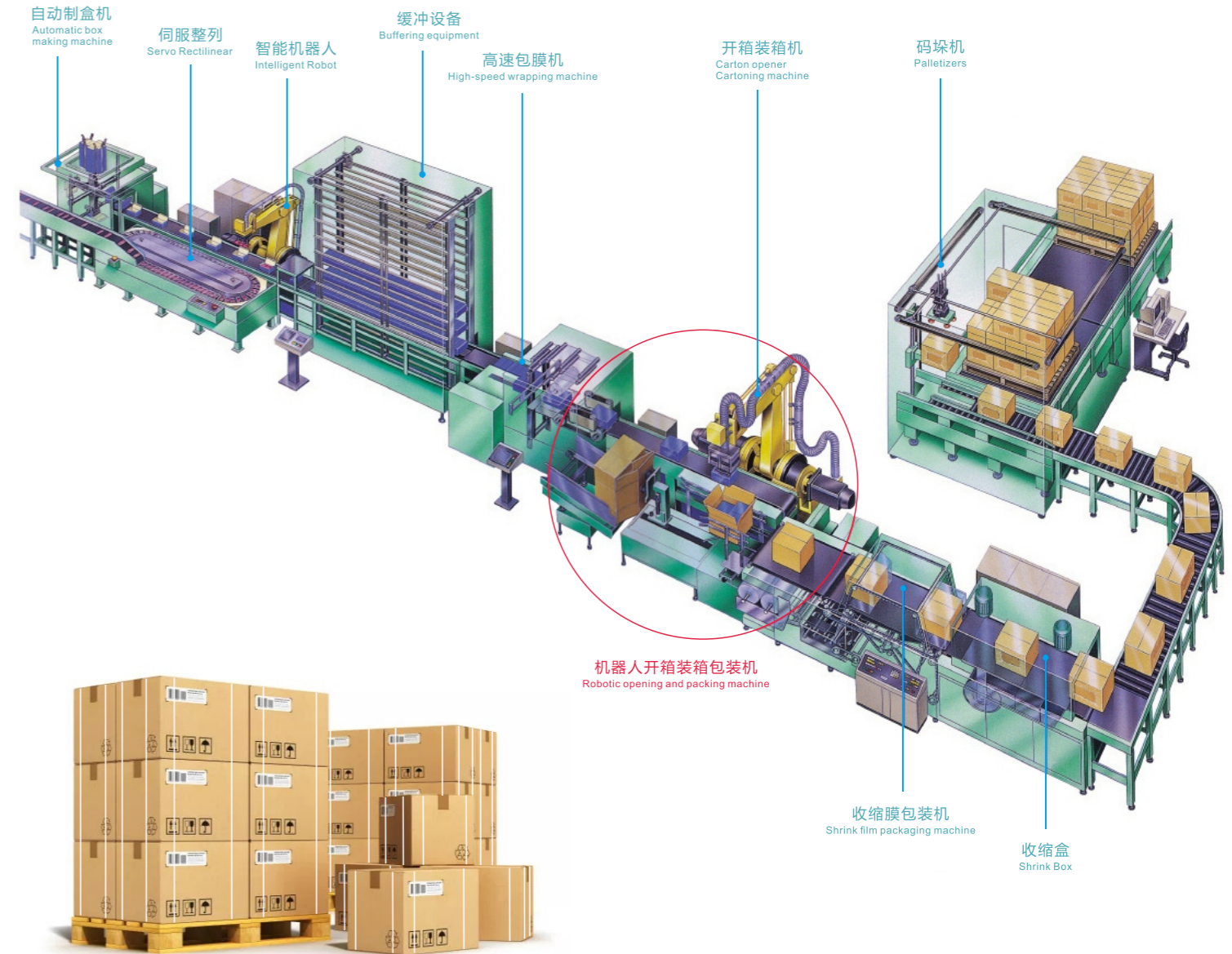
### 自动包装设备 AUTOMATIC PACKAGING EQUIPMENT

自动开箱机 Automatic Carton Opening Machine	005/002
自动折盖机 Automatic lid folding machine	003/004
自动装箱机 Automatic Cartoning Machine	005/006
上下驱动胶带封箱机 Up and down drive tape sealing machine	007/008
自动捆扎机 Automatic strapping machine	009/010

### 五金类自动包装设备 HARDWARE AUTOMATIC PACKAGING EQUIPMENT

BL50E自动电驱立式背封包装机 BL50E Automatic Electric Drive Vertical Back Seal Packaging Machine	011/012
BL50-35全自动视觉数粒立式背封包装机 BL50-35 Automatic Visual Counting Vertical Back Seal Packaging Machine	013/014
BL50-15全自动称重立式背封包装机 BL50-15 Automatic Weighing Vertical Back Seal Packaging Machine	015/016
BL50-10全自动混合计数立式背封包装机 BL50-10 Automatic Mixed Counting Vertical Back Seal Packaging Machine	017/018
BL5-25K自动给袋式大容量称重包装机 BL5-25K Automatic Bag Feeding High Capacity Weighing Packaging Machine	019/020

## 自动化包装设备生产流水线 AUTOMATIC PACKAGING EQUIPMENT PRODUCTION LINE



## 自动包装设备 AUTOMATIC PACKAGING EQUIPMENT

### 自动开箱机 Automatic Case Opener

A

#### 系统特点 SYSTEM FEATURES

采用多规格混合生产、自动化、信息化、模块化、柔性化、定制化、可视化、一键切换、远程维护设计、预警通知、评估报告、数据采集与处理、全局检测管理、设备全生命周期管理等。

Adopting multi-spec mixed production, automation, informatization, modularization, Flexibility, customization, Visualization, One-click switching, Remote maintenance design, Early warning notification, assessment reports, data collection and processing, Global detection management, Equipment lifecycle management, etc.



-   
自主研发  
Autonomy R&D
-   
全自动化  
Fully automated
-   
高效精准  
Autonomy R&D
-   
多重保护  
Autonomy R&D
-   
非标定制  
Non-standard custom
-   
适用范围广  
Multiple applications
-   
一键操作  
Autonomy R&D
-   
上乘材质  
Autonomy R&D
-   
节能环保  
Energy saving
-   
经久耐用  
Autonomy R&D
-   
多种选择  
A variety of options
-   
品质保障  
Autonomy R&D

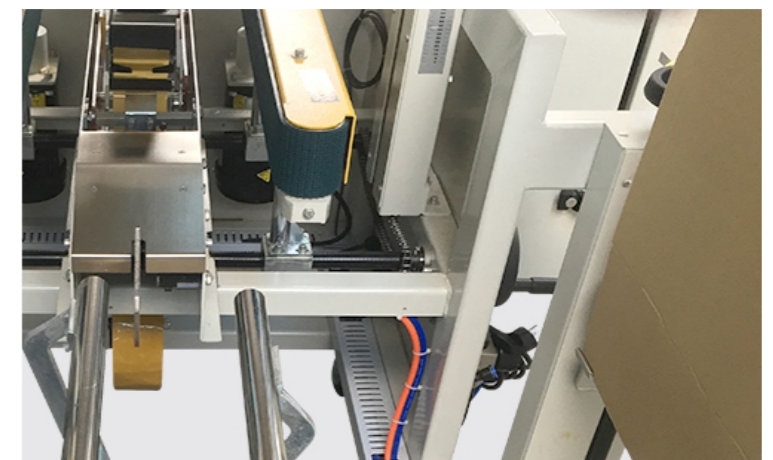
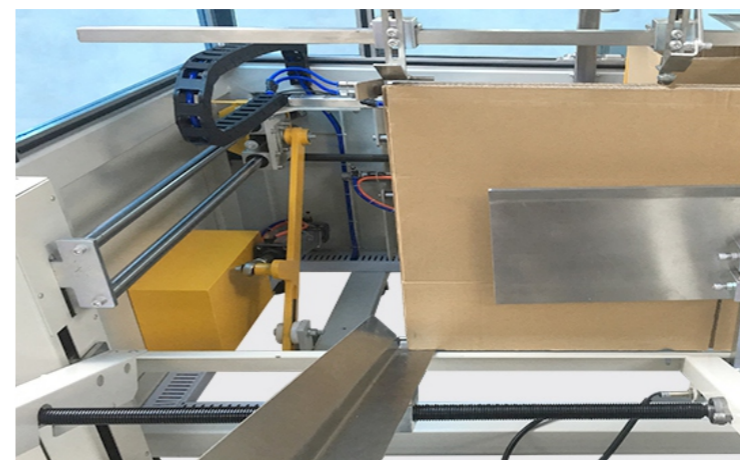
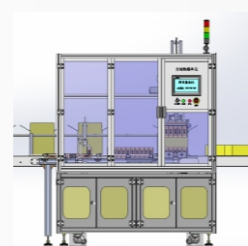
A 款 paragraph

B 款 paragraph

C 款 paragraph

D 款 paragraph

E 款 paragraph



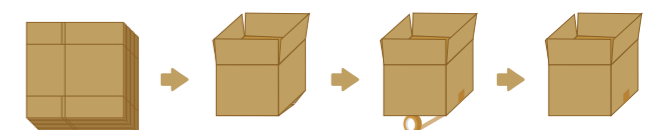
#### 设备功能介绍 EQUIPMENT FUNCTION INTRODUCTION

具有自动隔料分组、产品装袋、热封塑、小盒成型、产品装入小盒内、小盒贴标签、中盒成型、小盒产品装入中盒内、中盒贴标签、外箱自动成型、中盒产品装入外箱内、外箱自动贴标签、检测、喷码、封透明胶带、捆扎带、90°旋转、下料码垛、缺料报警等工序的在线监测、实时监控、质量溯源、条码识别、关键元器件寿命监测、数据存储、MES系统与ERP系统联网、参数任意配方、智慧能源分析与节能管理系统、智能装备服务大数据云平台等功能。

It has the functions of online monitoring, real-time monitoring, quality, traceability, barcode identification, key components life monitoring, data storage, MES system networking with ERP system, intelligent energy analysis and energy saving management system, intelligent equipment service data platform, etc. traceability, barcode identification, key components life monitoring, data storage, MES system and ERP system networking, parameters arbitrary formula, intelligent energy analysis and energy saving management system, intelligent equipment services big data cloud platform and other functions.

#### 设备技术参数 EQUIPMENT TECHNICAL PARAMETERS

开箱方式：立式开箱 开箱速度：8-12箱/分钟  
 封箱尺寸(mm)：L260-500,W160-400,H180-420  
 电源电压：220V 功率：180W 气压：6kg/cm<sup>3</sup> 耗气量：450NL/min  
 适用胶带宽度：48、60、70mm（择一使用）  
 胶带搭头：50-70mm  
 纸箱存储量：≈80个（根据纸箱厚度决定）  
 机械尺寸：L2100\*W2050\*H1450mm  
 机器重量：550KG 台面高度：630mm  
 Opening mode: vertical opening speed: 8-12 boxes/min  
 Seal size (mm): L260-500,W160-400,H180-420  
 Power supply voltage: 220V Power: 180W Air pressure: 6kg/cm<sup>3</sup> Air consumption: 450NL/min  
 Applicable tape width: 48, 60, 70mm (choose one to use)  
 Tape lap head: 50-70mm  
 Carton storage capacity: ≈ 80 (according to the thickness of the carton to decide)  
 Machine size: L2100\*W2050\*H1450mm Machine weight: 550KG Table height: 630mm



001

高低压电器元件/新能源元件自动化生产线系统集成商  
High and low voltage electrical components / new energy components automated production line system integrator

推动制造产业数字化转型升级4.0  
Promoting Digital Transformation and Upgrade of Manufacturing Industry 4.0

002



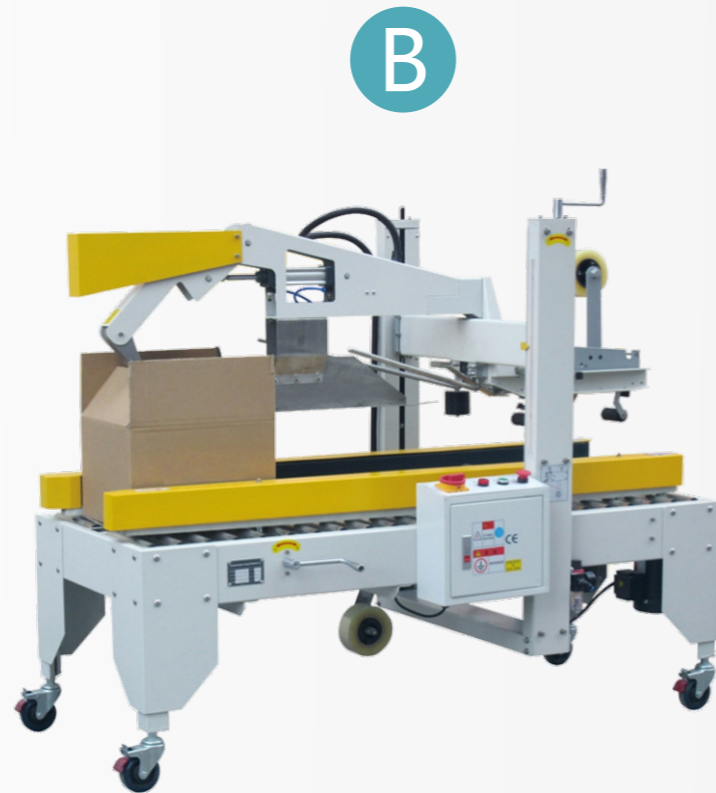
## 自动包装设备 AUTOMATIC PACKAGING EQUIPMENT

### 自动折盖机 Automatic cap folding machine

#### 系统特点 SYSTEM FEATURES

采用多规格混合生产、自动化、信息化、模块化、柔性化、定制化、可视化、一键切换、远程维护设计、预警通知、评估报告、数据采集与处理、全局检测管理、设备全生命周期管理等。

Adopting multi-spec mixed production, automation, informatization, modularization, Flexibility, customization, Visualization, One-click switching, Remote maintenance design, Early warning notification, assessment reports, data collection and processing, Global detection management, Equipment lifecycle management, etc.



-   
自主研发  
Autonomy R&D
-   
全自动化  
Fully automated
-   
高效精准  
Autonomy R&D
-   
多重保护  
Autonomy R&D
-   
非标定制  
Non-standard custom
-   
适用范围广  
Multiple applications
-   
一键操作  
Autonomy R&D
-   
上乘材质  
Autonomy R&D
-   
节能环保  
Energy saving
-   
经久耐用  
Autonomy R&D
-   
多种选择  
A variety of options
-   
品质保障  
Autonomy R&D

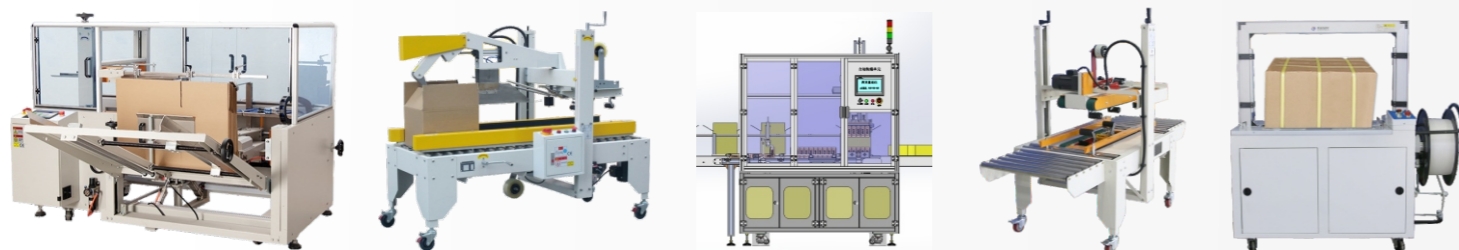
A 款 paragraph

B 款 paragraph

C 款 paragraph

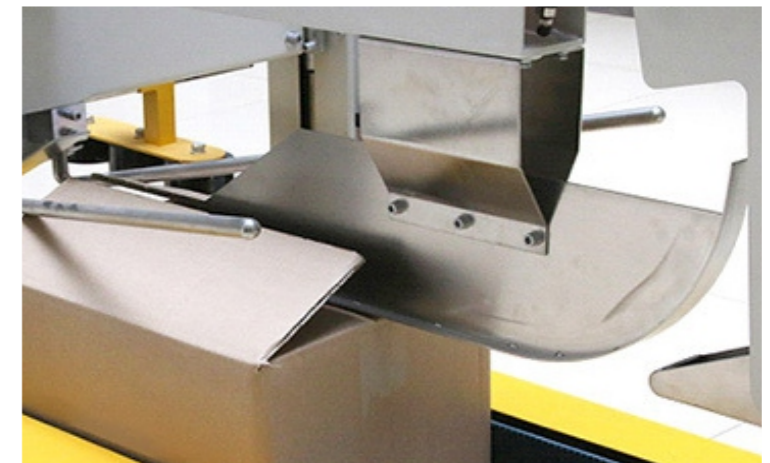
D 款 paragraph

E 款 paragraph



003

高低压电器元器件/新能源元器件自动化生产线系统集成商  
High and low voltage electrical components / new energy components automated production line system integrator



#### 设备功能介绍 EQUIPMENT FUNCTION INTRODUCTION

具有自动隔料分组、产品装袋、热封塑、小盒成型、产品装入小盒内、小盒贴标签、中盒成型、小盒产品装入中盒内、中盒贴标签、外箱自动成型、中盒产品装入外箱内、外箱自动贴标签、检测、喷码、封透明胶带、捆扎带、90°旋转、下料码垛、缺料报警等工序的在线监测、实时监控、质量溯源、条码识别、关键元器件寿命监测、数据存储、MES系统与ERP系统联网、参数任意配方、智慧能源分析与节能管理系统、智能装备服务大数据云平台等功能。

It has the functions of online monitoring, real-time monitoring, quality, traceability, barcode identification, key components life monitoring, data storage, MES system networking with ERP system, intelligent energy analysis and energy saving management system, intelligent equipment service data platform, etc. traceability, barcode identification, key components life monitoring, data storage, MES system and ERP system networking, parameters arbitrary formula, intelligent energy analysis and energy saving management system, intelligent equipment services big data cloud platform and other functions.

#### 设备技术参数 EQUIPMENT TECHNICAL PARAMETERS

折盖速度：8-12箱/分钟  
 封箱尺寸(mm)：L200-600,W130-500,H130-500  
 电源电压：220V 功率：400W  
 气压：6kg/cm<sup>3</sup> 耗气量：150NL/min  
 适用胶带宽度：48、60、70mm（择一使用）  
 胶带搭头：50-70mm  
 机械尺寸：L1850\*W1250\*H1550mm  
 机器重量：250KG 台面高度：620mm

Folding speed: 8-12 boxes/min  
 Seal size(mm): L200-600,W130-500,H130-500  
 Power supply voltage: 220V Power: 400W  
 Air pressure: 6kg/cm<sup>3</sup> Air consumption: 150NL/min  
 Applicable tape width: 48, 60, 70mm (choose one to use)  
 Tape lap head: 50-70mm Machine size: L1850\*W1250\*H1550mm  
 Machine weight: 250KG Table height: 620mm



004



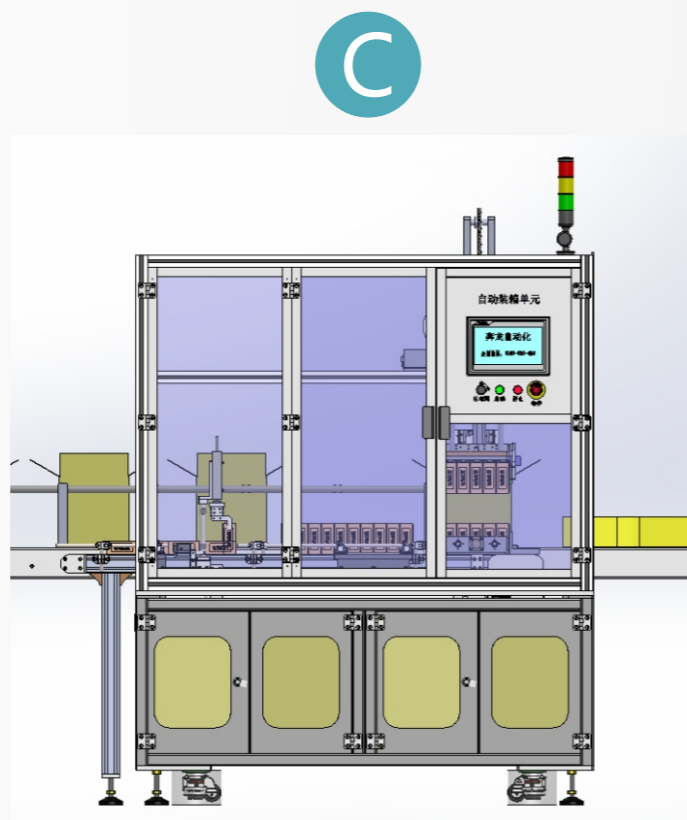
## 自动包装设备 AUTOMATIC PACKAGING EQUIPMENT

### 自动装箱机 Automatic Cartoner

#### 系统特点 SYSTEM FEATURES

采用多规格混合生产、自动化、信息化、模块化、柔性化、定制化、可视化、一键切换、远程维护设计、预警通知、评估报告、数据采集与处理、全局检测管理、设备全生命周期管理等。

Adopting multi-spec mixed production, automation, informatization, modularization, Flexibility, customization, Visualization, One-click switching, Remote maintenance design, Early warning notification, assessment reports, data collection and processing, Global detection management, Equipment lifecycle management, etc.



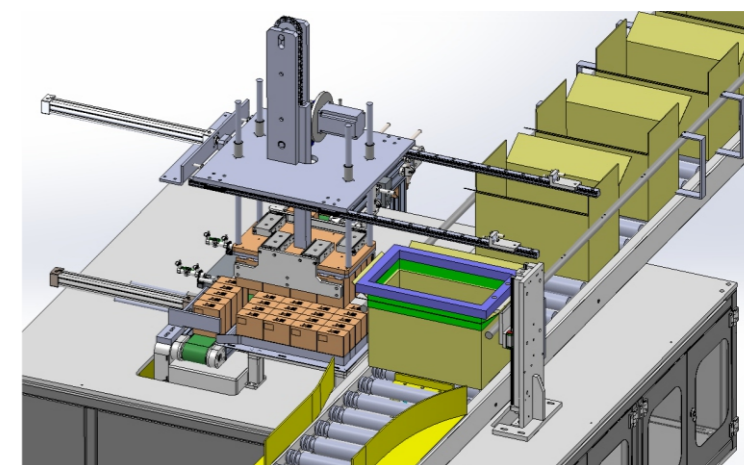
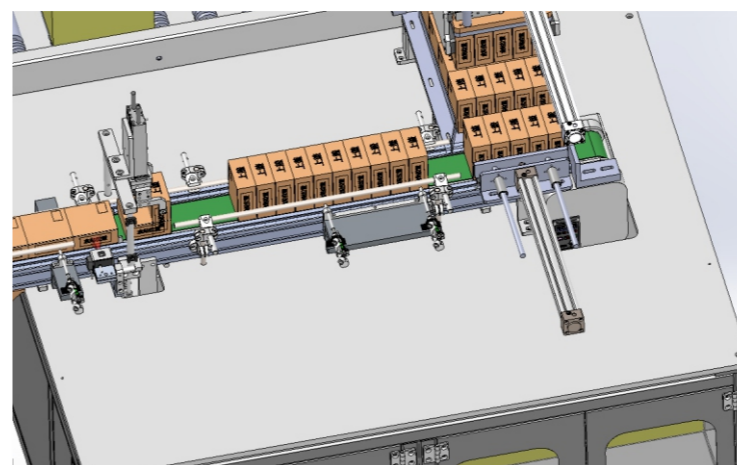
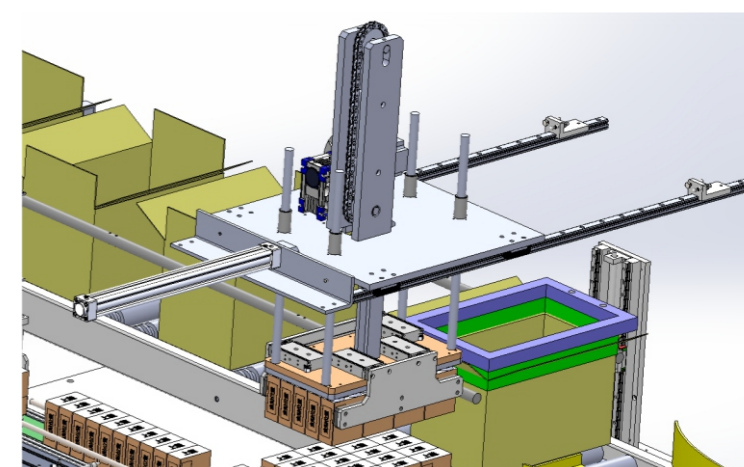
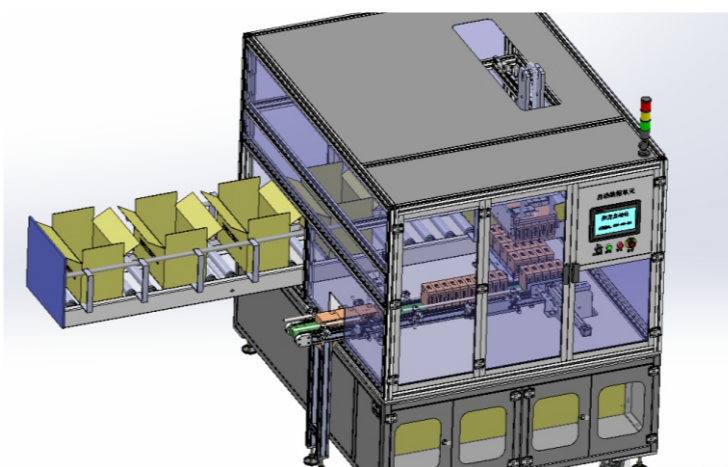
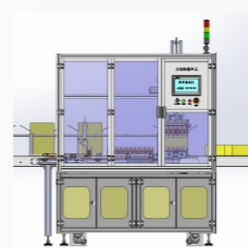
A 款 paragraph

B 款 paragraph

C 款 paragraph

D 款 paragraph

E 款 paragraph



#### 设备功能介绍 EQUIPMENT FUNCTION INTRODUCTION

具有自动隔料分组、产品装袋、热封塑、小盒成型、产品装入小盒内、小盒贴标签、中盒成型、小盒产品装入中盒内、中盒贴标签、外箱自动成型、中盒产品装入外箱内、外箱自动贴标签、检测、喷码、封透明胶带、捆扎带、90°旋转、下料码垛、缺料报警等工序的在线监测、实时监控、质量溯源、条码识别、关键元器件寿命监测、数据存储、MES系统与ERP系统联网、参数任意配方、智慧能源分析与节能管理系统、智能装备服务大数据云平台等功能。

It has the functions of online monitoring, real-time monitoring, quality, traceability, barcode identification, key components life monitoring, data storage, MES system networking with ERP system, intelligent energy analysis and energy saving management system, intelligent equipment service data platform, etc. traceability, barcode identification, key components life monitoring, data storage, MES system and ERP system networking, parameters arbitrary formula, intelligent energy analysis and energy saving management system, intelligent equipment services big data cloud platform and other functions.

#### 设备技术参数 EQUIPMENT TECHNICAL PARAMETERS

- 1、设备输入电压：380V±10%，50Hz；±1Hz；
  - 2、设备兼容性生产效率：可根据客户要求定做。
  - 3、装配方式：根据产品的不同生产工艺及要求，可以实现产品的自动装配。
  - 4、设备夹具可根据产品型号定做。
  - 5、设备具有故障报警、压力监测等报警显示功能。
  - 6、中文版和英文版两种操作系统。
  - 7、所有核心配件均采用意大利、瑞典、德国、日本、美国、台湾等不同国家和地区的进口配件。
  - 8、设备可选配《智慧能源分析与节能管理系统》和《智能装备服务大数据云平台》等功能。
  - 9、具有独立的自主知识产权。
- 1 · Equipment input voltage: 380V±10%, 50Hz; ±1Hz;
  - 2 · Equipment compatibility and production efficiency: can be customized according to customer requirements.
  - 3 · Assembly mode: according to the different production process and requirements of the product, it can realize the automatic assembly of the product.
  - 4 · Equipment fixture can be customized according to the product model.
  - 5 · Equipment with alarm display function such as fault alarm and pressure monitoring.
  - 6 · Two kinds of operating systems, Chinese and English.
  - 7 · All core parts are imported from different countries and regions such as Italy, Sweden, Germany, Japan, USA, Taiwan, etc.
  - 8 · The equipment can be equipped with optional functions such as "intelligent energy analysis and energy saving management system" and "intelligent equipment service big data cloud platform".
  - 9 · With independent intellectual property rights.



005

高低压电器元件/新能源元件自动化生产线系统集成商  
High and low voltage electrical components / new energy components automated production line system integrator

推动制造产业数字化转型升级4.0  
Promoting Digital Transformation and Upgrade of Manufacturing Industry 4.0

006



## 自动包装设备 AUTOMATIC PACKAGING EQUIPMENT

### 上下驱动胶带封箱机 Up and down drive tape sealing machine

#### 系统特点 SYSTEM FEATURES

采用多规格混合生产、自动化、信息化、模块化、柔性化、定制化、可视化、一键切换、远程维护设计、预警通知、评估报告、数据采集与处理、全局检测管理、设备全生命周期管理等。

Adopting multi-spec mixed production, automation, informatization, modularization, Flexibility, customization, Visualization, One-click switching, Remote maintenance design, Early warning notification, assessment reports, data collection and processing, Global detection management, Equipment lifecycle management, etc.



-  自主研发  
Autonomy R&D
-  全自动化  
Fully automated
-  高效精准  
Autonomy R&D
-  多重保护  
Autonomy R&D
-  非标定制  
Non-standard custom
-  适用范围广  
Multiple applications
-  一键操作  
Autonomy R&D
-  上乘材质  
Autonomy R&D
-  节能环保  
Energy saving
-  经久耐用  
Autonomy R&D
-  多种选择  
A variety of options
-  品质保障  
Autonomy R&D

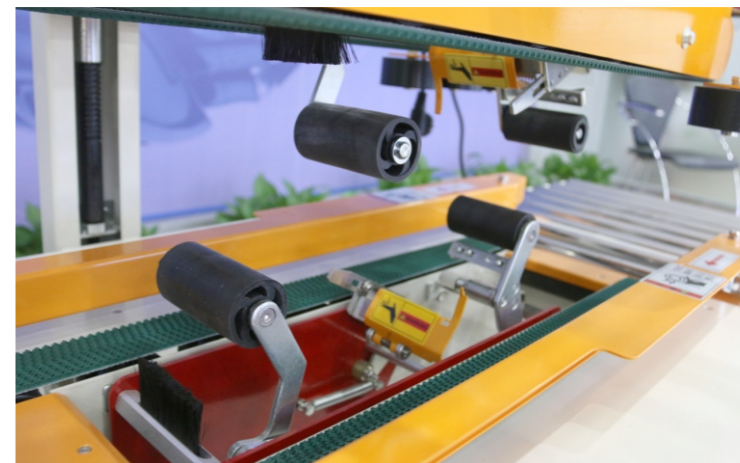
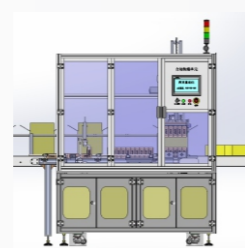
A 款 paragraph

B 款 paragraph

C 款 paragraph

D 款 paragraph

E 款 paragraph



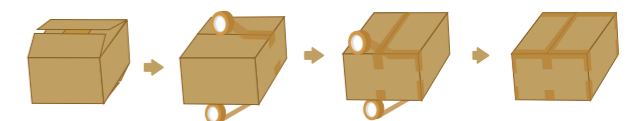
#### 设备功能介绍 EQUIPMENT FUNCTION INTRODUCTION

具有自动隔料分组、产品装袋、热封塑、小盒成型、产品装入小盒内、小盒贴标签、中盒成型、小盒产品装入中盒内、中盒贴标签、外箱自动成型、中盒产品装入外箱内、外箱自动贴标签、检测、喷码、封透明胶带、捆扎带、90°旋转、下料码垛、缺料报警等工序的在线监测、实时监控、质量溯源、条码识别、关键元器件寿命监测、数据存储、MES系统与ERP系统联网、参数任意配方、智慧能源分析与节能管理系统、智能装备服务大数据云平台等功能。

It has the functions of online monitoring, real-time monitoring, quality, traceability, barcode identification, key components life monitoring, data storage, MES system networking with ERP system, intelligent energy analysis and energy saving management system, intelligent equipment service data platform, etc. traceability, barcode identification, key components life monitoring, data storage, MES system and ERP system networking, parameters arbitrary formula, intelligent energy analysis and energy saving management system, intelligent equipment services big data cloud platform and other functions.

#### 设备技术参数 EQUIPMENT TECHNICAL PARAMETERS

电源：220V/50HZ  
 功率：0.18Kw;  
 重量：60kg;  
 外形尺寸：1030\*660\*1010 (不含前后滚筒架) mm  
 胶带宽度：大刀30mm/70mm、小刀30mm/45mm;  
 纸箱尺寸：最大 W600mm \* H500mm、最小W 250mm \* H200mm;  
 封箱承重：30kg  
 封箱速度：1000包/小时；  
 Power supply：220V/50HZ  
 Power：0.18Kw.  
 Weight：60kg.  
 Overall dimension: 1030\*660\*1010 (excluding front and rear roller frame) mm  
 Tape width: large knife 30mm/70mm, small knife 30mm/45mm.  
 Carton size: max W600mm\*H500mm, min W 250mm\*H200mm;  
 Sealing weight: 30kg  
 Sealing speed: 1000 packages/hour;



## 自动包装设备 AUTOMATIC PACKAGING EQUIPMENT

### 自动捆扎机 Automatic strapping machine

E

#### 系统特点 SYSTEM FEATURES

采用多规格混合生产、自动化、信息化、模块化、柔性化、定制化、可视化、一键切换、远程维护设计、预警通知、评估报告、数据采集与处理、全局检测管理、设备全生命周期管理等。

Adopting multi-spec mixed production, automation, informatization, modularization, Flexibility, customization, Visualization, One-click switching, Remote maintenance design, Early warning notification, assessment reports, data collection and processing, Global detection management, Equipment lifecycle management, etc.



-   
自主研发  
Autonomy R&D
-   
全自动化  
Fully automated
-   
高效精准  
Autonomy R&D
-   
多重保护  
Autonomy R&D
-   
非标定制  
Non-standard custom
-   
适用范围广  
Multiple applications
-   
一键操作  
Autonomy R&D
-   
上乘材质  
Autonomy R&D
-   
节能环保  
Energy saving
-   
经久耐用  
Autonomy R&D
-   
多种选择  
A variety of options
-   
品质保障  
Autonomy R&D

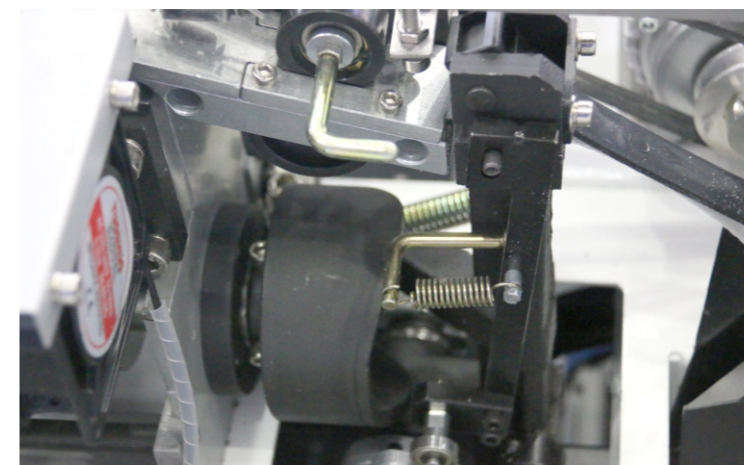
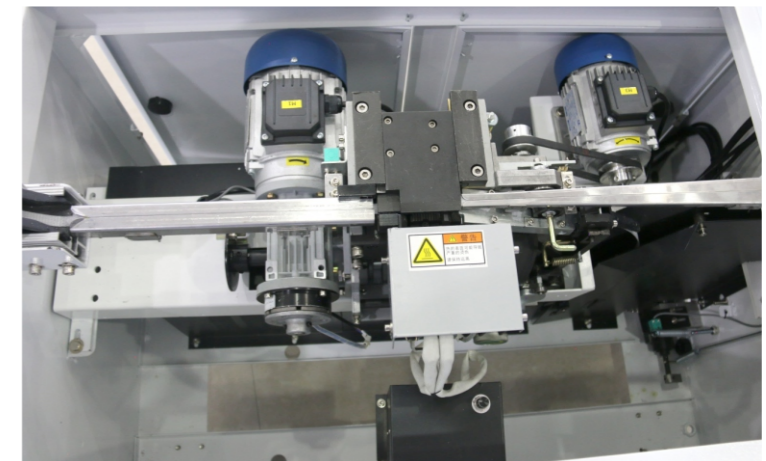
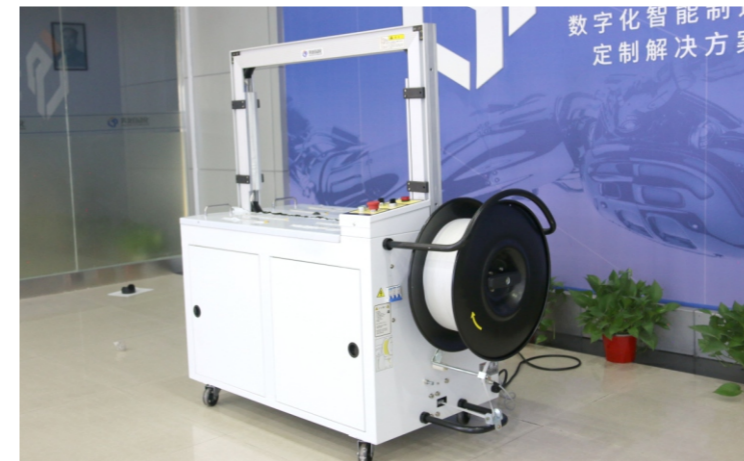
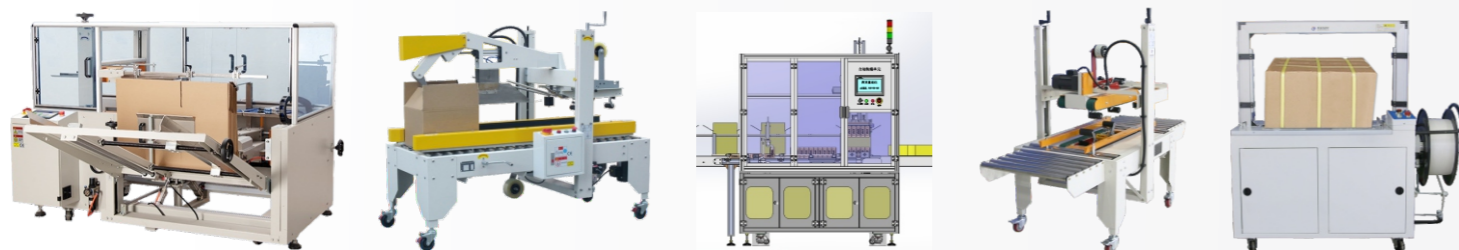
A 款 paragraph

B 款 paragraph

C 款 paragraph

D 款 paragraph

E 款 paragraph



#### 设备功能介绍 EQUIPMENT FUNCTION INTRODUCTION

具有自动隔料分组、产品装袋、热封塑、小盒成型、产品装入小盒内、小盒贴标签、中盒成型、小盒产品装入中盒内、中盒贴标签、外箱自动成型、中盒产品装入外箱内、外箱自动贴标签、检测、喷码、封透明胶带、捆扎带、90°旋转、下料码垛、缺料报警等工序的在线监测、实时监控、质量溯源、条码识别、关键元器件寿命监测、数据存储、MES系统与ERP系统联网、参数任意配方、智慧能源分析与节能管理系统、智能装备服务大数据云平台等功能。

It has the functions of online monitoring, real-time monitoring, quality, traceability, barcode identification, key components life monitoring, data storage, MES system networking with ERP system, intelligent energy analysis and energy saving management system, intelligent equipment service data platform, etc. traceability, barcode identification, key components life monitoring, data storage, MES system and ERP system networking, parameters arbitrary formula, intelligent energy analysis and energy saving management system, intelligent equipment services big data cloud platform and other functions.

#### 设备技术参数 EQUIPMENT TECHNICAL PARAMETERS

电源：380V 50Hz  
 功率：1.0kW  
 捆扎速度：≤2.5秒/道  
 工作台面高度：750mm(可根据需要定制)  
 捆扎带规格：宽9-15 (±1) mm, 厚 0.55-1.0 (±0.1) mm  
 捆扎规格：最小包装尺寸：宽80mm×高100mm  
 标准框架尺寸：宽800mm×高600mm (可定制)  
 整机尺寸：L1400mm×W628mm×H1418mm ;  
 Power supply: 380V 50Hz  
 Power : 1.0kW  
 Strapping speed: ≤2.5 sec/channel  
 Working table height: 750mm (can be customized according to needs)  
 Strapping specifications: width 9-15(±1)mm, thickness 0.55-1.0(±0.1)mm  
 Strapping specifications: minimum packing size: width 80mm×height 100mm  
 Standard frame size: width 800mm×height 600mm (can be customized)  
 Overall machine size: L1400mm×W628mm×H1418mm;



009

高低压电器元器件/新能源元器件自动化生产线系统集成商  
High and low voltage electrical components / new energy components automated production line system integrator

推动制造产业数字化转型升级4.0  
Promoting Digital Transformation and Upgrade of Manufacturing Industry 4.0

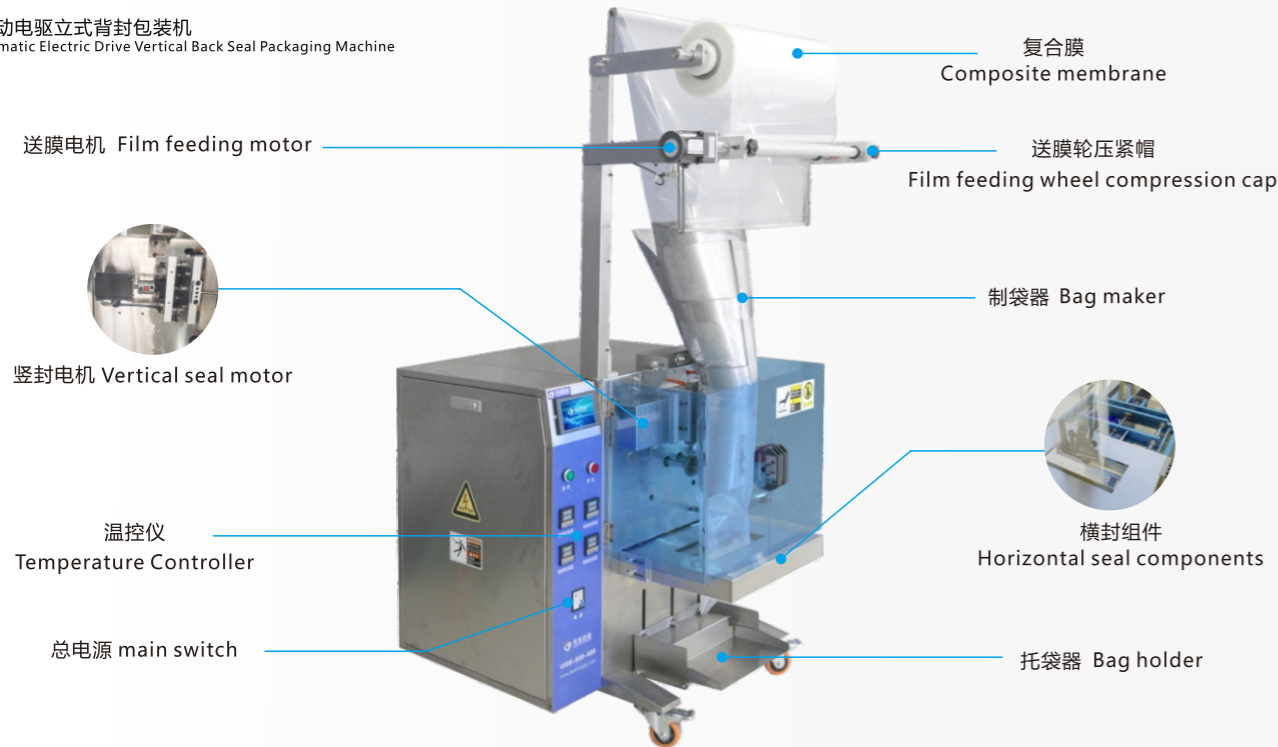
010





## 五金类自动包装设备 HARDWARE AUTOMATIC PACKAGING EQUIPMENT

BL50E自动电驱立式背封包装机  
BL50E Automatic Electric Drive Vertical Back Seal Packaging Machine



适用产品背封式包装：螺丝、螺母、端子、接线端子、塑料件、玩具、饰品、橡胶零件、五金、气动配件、汽配零件等

作业方式：人工称重或计数再投料到下料口，自动感应落料，自动封切，自动出包；可单品或者多品种混合投料包装。

适用包材：PE PET复合膜、镀铝膜、过滤纸、无纺布、印刷膜、膜宽度120-500mm，其他宽度需定做

本机有两款版本：1、纯电驱版本。2、气驱动版本。选用气驱动版本时，客户需自备选用气源或购买一台空压机及干燥机。

Applicable product back-sealing packaging: screws, nuts, terminals, terminal blocks, plastic parts, toys, accessories, rubber parts, hardware, pneumatic parts, auto parts, etc.

Operation method: manual weighing or counting and then feeding to the unloading port, automatic induction blanking, automatic sealing and cutting, automatic packaging; single product or multi-variety mixed feeding and packaging.

Applicable packaging materials: PE PET composite film, aluminized film, filter paper, non-woven fabric, printing film, film width 120-500mm, other widths need to be customized

There are two versions of this machine: 1. Pure electric drive version. 2. Air-driven version. When selecting the air-driven version, the customer needs to use an alternative air source or purchase an air compressor and dryer.

### 技术参数 TECHNICAL PARAMETERS

- ☑ 输入电压：220V±10%，50Hz；
- ☑ 设备功率：约4.5KW
- ☑ 设备包装效率：10-15包/min(包装速度与人工上料速度有关)。
- ☑ 设备具有自动计数、故障报警显示功能。
- ☑ Input voltage: 220V±10%, 50Hz;
- ☑ Equipment power: about 4.5KW
- ☑ Equipment packaging efficiency: 10-15 bags/min (the packaging speed is related to the manual feeding speed)
- ☑ The equipment has the functions of automatic counting and fault alarm display.



## 五金类自动包装设备 HARDWARE AUTOMATIC PACKAGING EQUIPMENT

BL50-35全自动视觉数粒立式背封包装机  
BL50-35 Automatic Visual Counting Vertical Back Seal Packaging Machine



适用产品背封式包装：螺丝、螺母、端子、接线端子、塑料件、玩具、饰品、橡胶零件、五金、气动配件、汽配零件等

作业方式：机器视觉数粒，自动放料，自动感应落料，自动封切，自动出包；可单品或者多品种混合投料包装。

适用包材：PE PET复合膜、镀铝膜、过滤纸、无纺布、印刷膜、膜宽度120-500mm，其他宽度需定做

本机有两款版本：1、纯电驱版本；2、气动驱动版本。选用气驱动版本时，客户需自备选用气源或购买一台空压机及干燥机。

Applicable product back-sealing packaging: screws, nuts, terminals, terminal blocks, plastic parts, toys, accessories, rubber parts, hardware, pneumatic parts, auto parts, etc.  
 Operation mode: machine vision counting, automatic feeding, automatic induction blanking, automatic sealing and cutting, automatic packaging; single product or multi-variety mixed feeding and packaging.

Applicable packaging materials: PE PET composite film, aluminized film, filter paper, non-woven fabric, printing film, film width 120-500mm, other widths need to be customized  
 There are two versions of this machine: 1. Pure electric drive version; 2. Pneumatic drive version. When selecting the air-driven version, the customer needs to use an alternative air source or purchase an air compressor and dryer.

### 技术参数 TECHNICAL PARAMETERA

- ☑ 输入电压：220V±10%，50Hz；
- ☑ 设备功率：约4.5KW
- ☑ 设备包装效率：10-15包/min(包装速度与人工上料速度有关)
- ☑ 设备具有自动计数、故障报警显示功能。

- ☑ Input voltage: 220V±10%, 50Hz;
- ☑ Equipment power: about 4.5KW
- ☑ Equipment packaging efficiency: 10-15 bags/min (the packaging speed is related to the manual feeding speed)

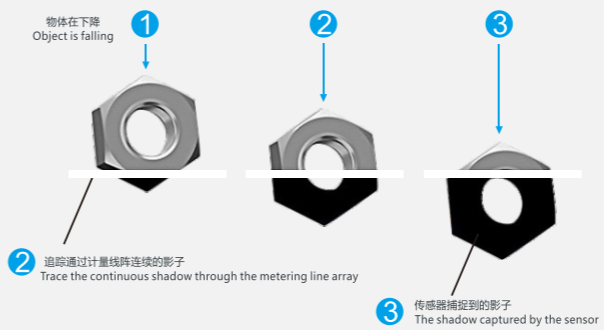
- ☑ The equipment has the functions of automatic counting and fault alarm display.



### 视觉数粒 VISUAL COUNTING

采用高速相机扫描识别，捕捉物料下落影像，利用高速处理芯片，识别物料并通过其特征判断轮廓物料数量

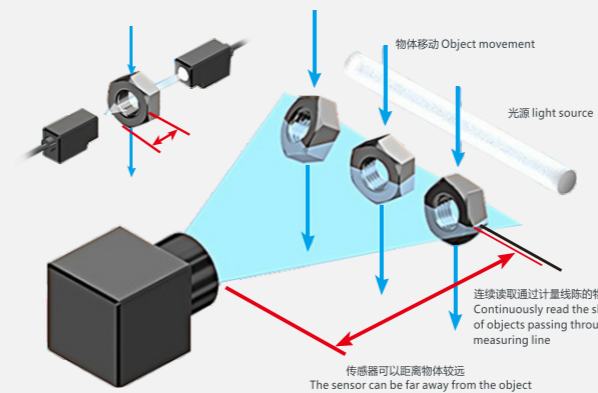
Use high-speed camera to scan and recognize, capture material falling images, use high-speed processing chip. Identify the material and judge the quantity of the contour material based on its characteristics



### 高速CCD传感器 HIGH-SPEED CCD SENSOR

分辨率2048，扫描速度每秒10000次，配备600万高清光学镜头，可以识别出0.3mm的物料颗粒

Resolution 2048, scanning speed 10,000 times per second, equipped with 6 million high-definition optical lens. Can identify material particles of 0.3mm

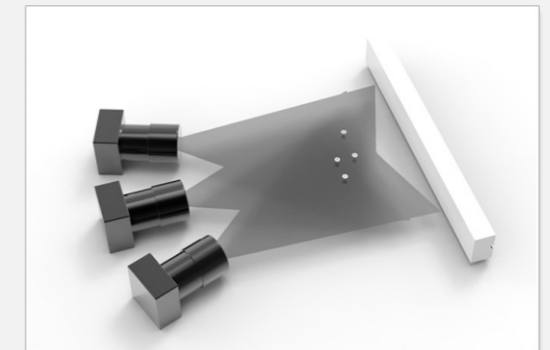


### 三相机立体识别技术

### THREE-CAMERA STEREO RECOGNITION TECHNOLOGY

有效地解决了物料重叠造成的识别误差，能快速准确识别出物料的具体数量、理论上识别精度可达100%

Effectively solve the identification error caused by the overlapping of materials, and can be fast and accurate Identify the specific quantity of materials, theoretically the recognition accuracy can reach 100%



### 高速数粒系统 HIGH-SPEED COUNTING SYSTEM



## 五金类自动包装设备 HARDWARE AUTOMATIC PACKAGING EQUIPMENT

BL50-15全自动称重立式背封包装机  
BL50-15 Automatic Weighing Vertical Back Seal Packaging Machine



适用产品背封式包装：螺丝、螺母、端子、接线端子、塑料件、玩具、饰品、橡胶零件、五金、气动配件、汽配零件等  
作业方式：分装机自动称重，自动投料，自动感应落料，自动封切，自动出包；可单品或者多品种混合称重投料包装。

适用包材：PE PET复合膜、镀铝膜、过滤纸、无纺布、印刷膜、膜宽度120-500mm，其他宽度需定做

关于售后：1、本公司设备均在国家三包范围内，品质保证，售后无忧。2、关于保修，产品均保修一年。

Applicable product back-sealing packaging: screws, nuts, terminals, terminal blocks, plastic parts, toys, accessories, rubber parts, hardware, pneumatic parts, auto parts, etc.  
Operation mode: automatic weighing, automatic feeding, automatic induction blanking, automatic sealing and cutting, automatic packaging out of the packaging machine; single product or multi-variety mixed weighing and feeding packaging can be used.

Applicable packaging materials: PE PET composite film, aluminized film, filter paper, non-woven fabric, printing film, film width 120-500mm, other widths need to be customized

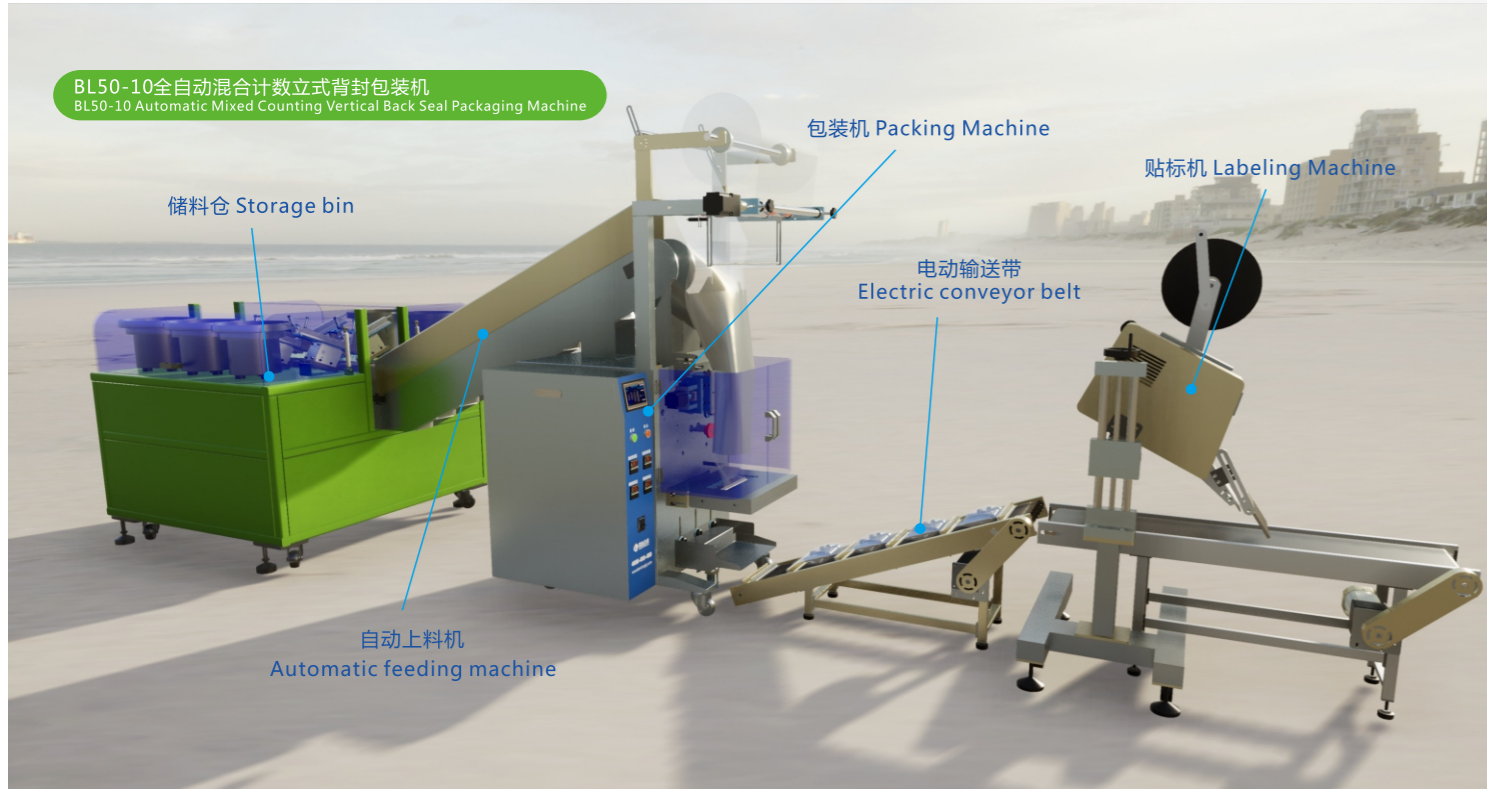
About after-sales: 1. The company's equipment is within the scope of the national three guarantees, quality assurance, and worry-free after-sales. 2. Regarding the warranty, the products are guaranteed for one year.

### 技术参数 TECHNICAL PARAMETERA

- ☑ 输入电压：220V±10%，50Hz；
- ☑ 设备功率：约4.5KW
- ☑ 设备包装效率：10-15包/min(包装速度与人工上料速度有关)
- ☑ 称重范围：50g-5000g，称重精度±1g
- ☑ 设备具有自动计数、故障报警显示功能
- ☑ Input voltage: 220V±10%, 50Hz;
- ☑ Equipment power: about 4.5KW
- ☑ Equipment packaging efficiency: 10-15 bags/min
- ☑ (the packaging speed is related to the manual feeding speed)
- ☑ Weighing range: 50g-5000g, weighing accuracy ±1g
- ☑ The equipment has the functions of automatic counting and fault alarm display



## 五金类自动包装设备 HARDWARE AUTOMATIC PACKAGING EQUIPMENT



适用产品背封式包装：螺丝、螺母、垫片、弹垫、木螺钉、胶塞等不同物料的组合计数包装材料。

作业方式：振动盘组合自动计数，自动翻斗投料，自动感应落料，自动封切，自动出包。

适用包材：PE PET复合膜、镀铝膜、过滤纸、无纺布、印刷膜、膜宽度120-500mm，其他宽度需定做。

关于售后：1、本公司设备均在国家三包范围内，品质保证，售后无忧。2、关于保修，产品均保修一年。

Applicable product back-seal packaging: Screws, nuts, washers, spring washers, wood screws, rubber plugs and other combined counting packaging materials.

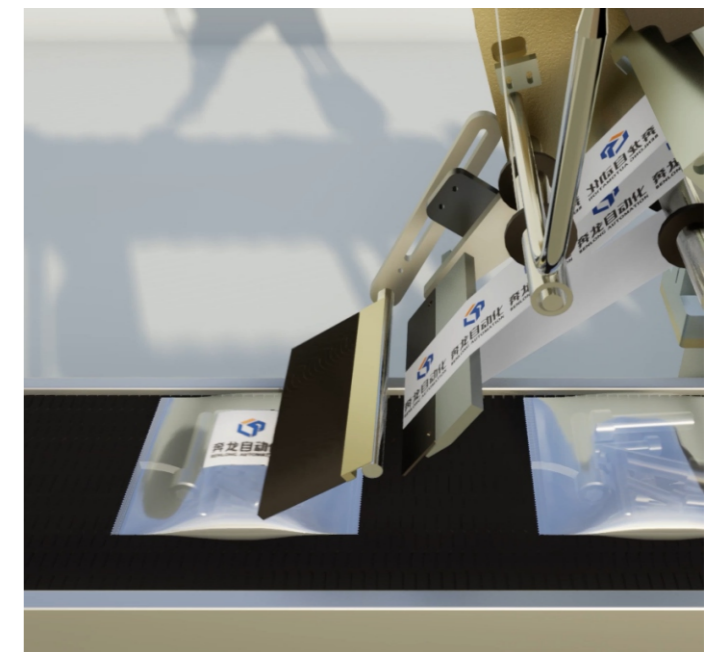
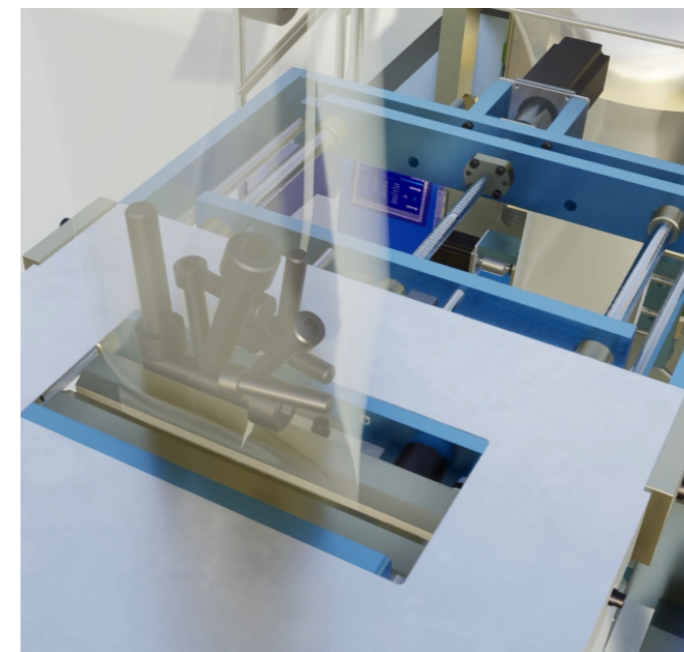
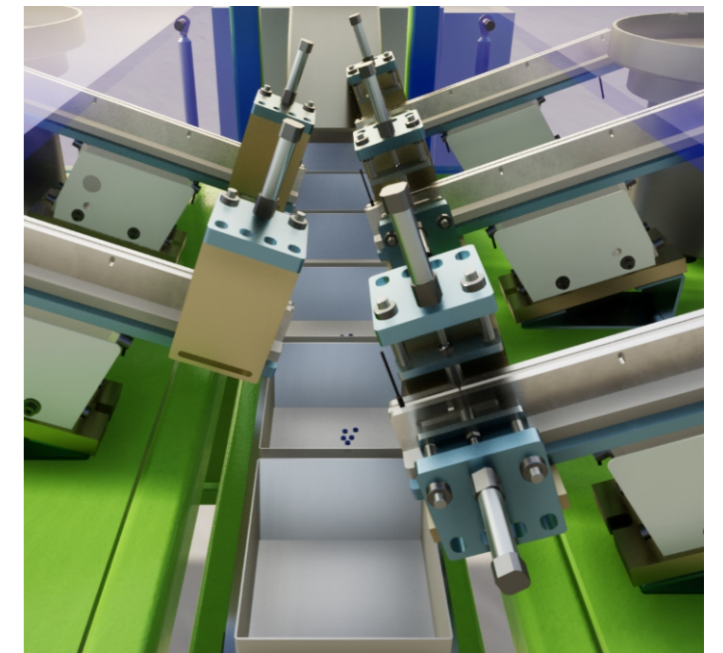
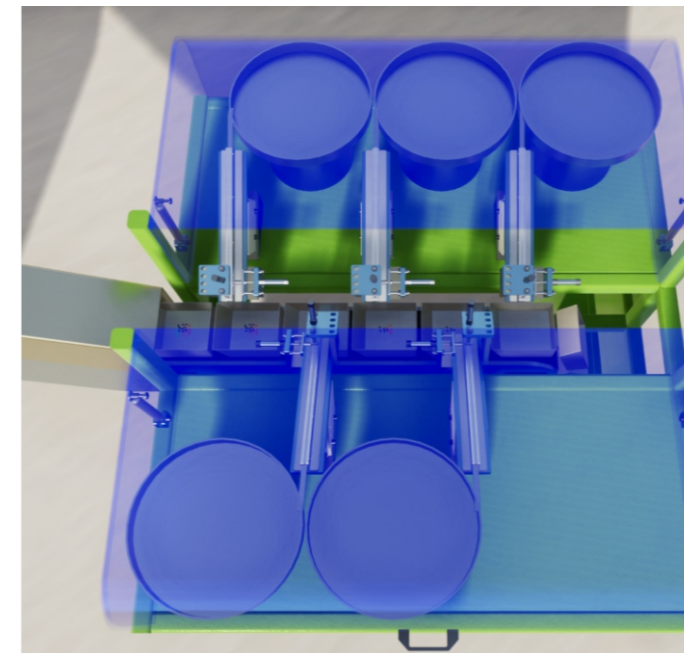
Operation mode: automatic counting of vibrating plate combination, automatic tipping and feeding, automatic induction of blanking, automatic sealing and cutting, and automatic packaging.

Applicable packaging materials: PE PET composite film, aluminized film, filter paper, non-woven fabric, printing film, film width 120-500mm, other widths need to be customized.

About after-sales: 1. The company's equipment is within the scope of the national three guarantees, quality assurance, and worry-free after-sales. 2. Regarding the warranty, the products are guaranteed for one year.

### 技术参数 TECHNICAL PARAMETERS

- 输入电压：220V±10%，50Hz；
- 设备功率：约4.5KW
- 设备包装效率：15-25包/min（根据物料包装要求不同速度不一）
- 设备具有自动计数、故障报警显示功能。
- Input voltage: 220V±10%, 50Hz;
- Equipment power: about 4.5KW
- Equipment packaging efficiency: 15-25 bags/min  
(different speed varies according to material packaging requirements)
- The equipment has the functions of automatic counting and fault alarm display.



## 五金类自动包装设备 HARDWARE AUTOMATIC PACKAGING EQUIPMENT

BL5-25K自动给袋式大容量称重包装机  
BL5-25K Automatic Bag Feeding High Capacity Weighing Packaging Machine



设备名称：塑胶粒子、大米、茶叶、五谷杂粮等大容量给袋式定量称重真空包装机。适用产品给袋式真空包装：塑胶粒子、大米、茶叶、五谷杂粮等  
 作业方式：人工套袋/自动套袋，自动称重，自动投料，自动检重，自动真空，自动封口；自动出包。

适用包材：PE折角袋，平角袋，真空袋等预制袋。注意事项本机需要气源，客户需自备气源或购买一台空压机及干燥机。

关于售后：1、本公司设备均在国家三包范围内，品质保证，售后无忧。2、关于保修，产品均保修一年。

Equipment name: Large-capacity bag-type quantitative weighing vacuum packaging machine for plastic particles, rice, tea, whole grains, etc. Applicable products are bag-type vacuum packaging: plastic particles, rice, tea, whole grains, etc.

Operation method: manual bagging/automatic bagging, automatic weighing, automatic feeding, automatic checkweighing, automatic vacuum, automatic sealing; automatic bag delivery.

Applicable packaging materials: PE fold-angle bags, flat-angle bags, vacuum bags and other prefabricated bags. Note: This machine needs air source, customers need to prepare their own air source or purchase an air compressor and dryer.

About after-sales: 1. The company's equipment is within the scope of the national three guarantees, quality assurance, and worry-free after-sales. 2. Regarding the warranty, the products are guaranteed for one year.

### 技术参数 TECHNICAL PARAMETERA

- ✓ 输入电压：220V±10%，50Hz；
- ✓ 设备功率：约5.5KW
- ✓ 设备包装效率：120-150包/小时
- ✓ 设备具有自动计数、故障报警显示功能。
- ✓ 适用包装范围：5-25kg/包
- ✓ 适用预制袋尺寸：400\*700-140，其他尺寸袋子设备需定制

- ✓ Input voltage: 220V±10%, 50Hz;
- ✓ Equipment power: about 5.5KW
- ✓ Equipment packaging efficiency: 120-150 bags/hour
- ✓ The equipment has the functions of automatic counting and fault alarm display.
- ✓ Applicable packaging range: 5-25kg/bag
- ✓ Applicable prefabricated bag size: 400\*700-140, other size bag equipment needs to be customized

