

企业简介 >>>

BENLONG AUTOMATION COMPANY PROFILE

奔龙自动化科技有限公司成立于2008年，以自动化、智能化、机器人、传感器、物联网、MES系统技术为核心，为客户提供智能装备制造及系统集成解决方案的国家级高新技术企业。主营产品有：高低压电器元器件自动化生产线、新能源元器件自动化生产线、充电桩自动化生产线、锂电池自动化拼装生产线、自动化焊接设备等，公司产品远销全国各地，同时出口到东南亚、中东、北非等30多个国家和地区。



Benlong Automation Technology Co., Ltd. was established in 2008, with automation, intelligence, robotics, sensors, Internet of Things, and MES system technology as its core, providing customers with intelligent equipment manufacturing and system integration solutions as a national high-tech enterprise. Our main products include: automated production lines for high and low voltage electrical components, automated production lines for new energy components, automated production lines for charging piles, automated assembly production lines for lithium batteries, automated welding equipment, etc. Our products are exported to various parts of the country and are also exported to more than 30 countries and regions such as Southeast Asia, the Middle East, and North Africa.



<p>2008年 奔龙自动化创业 Benlong Entrepreneurship</p>	<p>80+名 技术专员 technical attache</p>	<p>3+家 战略合作单位 Strategic Partners</p>	<p>2+所 科研院所及大专院校 Research Institutions</p>	<p>30+个 业务遍及国家和地区 Business covers countries and regions</p>
<p>20+家 外贸合作企业 foreign enterprise</p>	<p>28+家 上市公司合作 Listed company cooperation</p>	<p>1200+家 国内公司合作 Cooperative companies</p>	<p>265+个 知识产权 intellectual property</p>	<p>2+个 企业资质 Qualifications</p>

奔龙自动化科技有限公司
Benlong Automation Technology Co., Ltd

SINCE 2008

+86-577-62777062 4008-600-680
E-mail: zzl@benlongkj.cn http://www.benlongkj.com



中文 抖音 English Tik tok WhatsApp



高端智能装备整体解决方案

HIGH-END INTELLIGENT EQUIPMENT OVERALL SOLUTIONS
浙江省科学技术进步奖 | 科技人员突出贡献奖 | 专利示范企业

National High tech Enterprise, Zhejiang Provincial Science and Technology Progress Award, Outstanding Contribution Award for Scientific and Technological Personnel, Patent Demonstration Enterprise



物流输送专用设备

LOGISTICS CONVEYING SPECIAL EQUIPMENT

物流输送专用设备

Logistics conveying special equipment

A

系统特点 SYSTEM FEATURES

采用多规格混合生产、自动化、信息化、模块化、柔性化、定制化、可视化、一键切换、远程维护设计、预警通知、评估报告、数据采集与处理、全局检测管理、设备全生命周期管理等。

Adopting multi-spec mixed production, automation, informatization, modularization, Flexibility, customization, Visualization, One-click switching, Remote maintenance design, Early warning notification, assessment reports, data collection and processing, Global detection management, Equipment lifecycle management, etc.



A款 paragraph

B款 paragraph

C款 paragraph

D款 paragraph

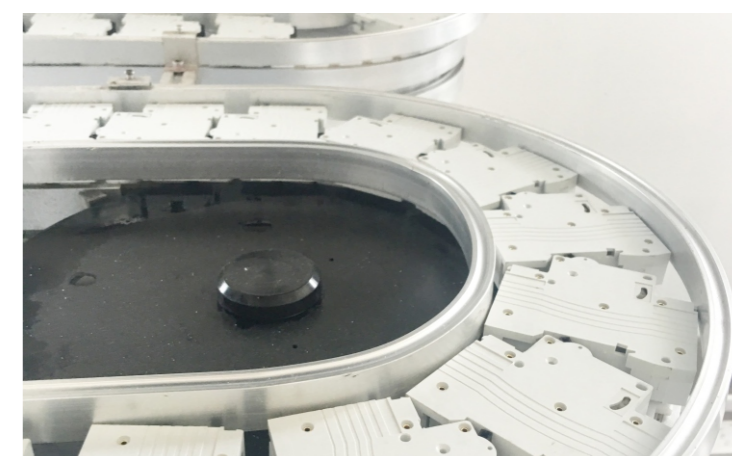
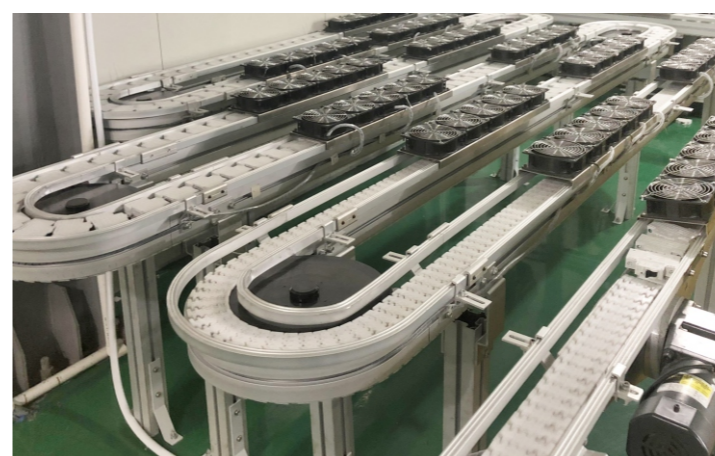
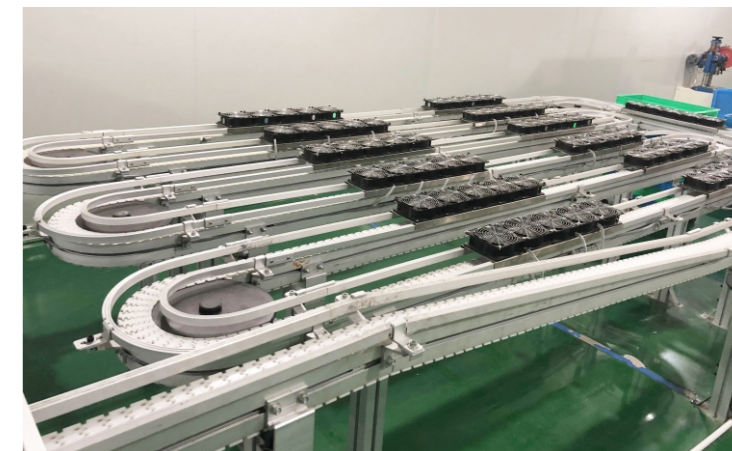
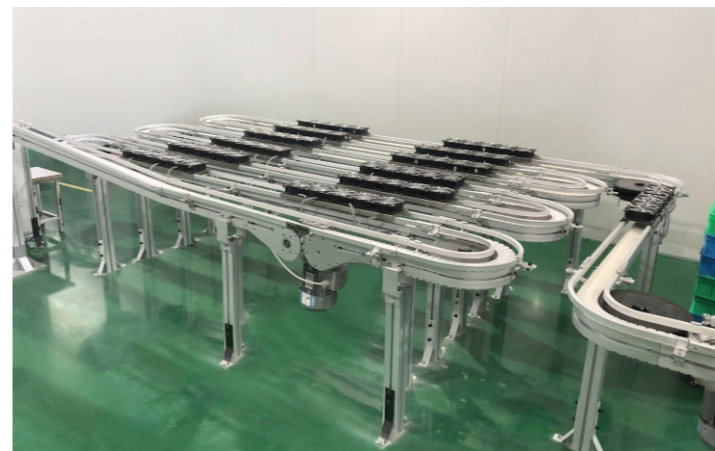
E款 paragraph



高端智能装备生态链 INTELLIGENT EQUIPMENT ECOLOGICAL CHAIN

高低压电器元器件自动化生产线、新能源元器件自动化生产线、低压电器实验室检测设备、焊接类专用设备、激光应用专用设备、机器人应用专用设备、视觉应用专用设备、**物流输送专用设备**、自动化装配及专用设备、自动包装设备、MES智能制造生产过程执行系统、智能仓储、

High and low voltage electrical components automation production line, New energy components automation production line, Low-voltage electrical laboratory testing equipment Special equipment for welding, special equipment for, **Laser application special equipment**, Robot application special equipment, Vision application special equipment, Logistics conveying equipment, Automated assembly and special equipment, Automatic packaging equipment, MES intelligent manufacturing process execution system, Intelligent warehousing,



设备功能介绍 EQUIPMENT FUNCTION INTRODUCTION

具有自动物流、输送、提升、循环、不良品区分、缺料报警等工序的装配、在线检测、实时监控、质量溯源、条码识别、元器件寿命监测、数据存储、MES系统与ERP系统联网、参数任意配方、智慧能源分析与节能管理系统、智能装备服务大数据云平台等功能。

With automatic logistics, conveying, lifting, circulation, defective product differentiation, missing material alarm and other processes of assembly, online detection, real-time monitoring, quality traceability, barcode identification, component life monitoring, data storage, MES system and ERP system networking, parameters arbitrary recipe, intelligent energy analysis and energy saving management system, intelligent equipment services big data cloud platform and other functions.

设备技术参数 EQUIPMENT TECHNICAL PARAMETERS

- 1、设备输入电压 $380V \pm 10\%$ ，50Hz； $\pm 1Hz$ ；
- 2、设备兼容性 & 物流速度：可根据客户要求定做。
- 3、物流输送选配：根据产品的不同生产工艺及要求，可以采用平面皮带输送线、链板输送线、倍速链输送线、提升机+输送线、循环输送线等方式实现。
- 4、设备输送线尺寸及负载可根据产品型号定做。
- 5、设备具有故障报警、压力监测等报警显示功能。
- 6、中文版和英文版两种操作系统。
- 7、所有核心配件均采用意大利、瑞典、德国、日本、美国、台湾等不同国家和地区的进口配件。
- 8、设备可选配《智慧能源分析与节能管理系统》和《智能装备服务大数据云平台》等功能。
- 9、具有独立的自主知识产权。

- 1 · Equipment input voltage $380V \pm 10\%$, 50Hz; $\pm 1Hz$;
- 2 · Equipment compatibility and logistics speed: can be customized according to customer requirements.
- 3 · Logistics conveying option: according to the different production process and requirements of the product, it can be realized by flat belt conveying line, chain plate conveying line, timespeed chain conveying line, elevator + conveying line, circulation conveying line, etc.
- 4 · The size and load of the equipment conveying line can be customized according to the product model.
- 5 · The equipment has alarm display functions such as fault alarm and pressure monitoring.
- 6 · Two kinds of operating systems, Chinese and English.
- 7 · All core parts are imported from different countries and regions such as Italy, Sweden, Germany, Japan, USA, Taiwan, etc.
- 8 · The equipment can be equipped with optional functions such as "intelligent energy analysis and energy saving management system" and "intelligent equipment service big data cloud platform".
- 9 · With independent intellectual property rights.



物流输送专用设备

Logistics conveying special equipment

B

系统特点 SYSTEM FEATURES

采用多规格混合生产、自动化、信息化、模块化、柔性化、定制化、可视化、一键切换、远程维护设计、预警通知、评估报告、数据采集与处理、全局检测管理、设备全生命周期管理等。

Adopting multi-spec mixed production, automation, informatization, modularization, Flexibility, customization, Visualization, One-click switching, Remote maintenance design, Early warning notification, assessment reports, data collection and processing, Global detection management, Equipment lifecycle management, etc.



A款 paragraph

B款 paragraph

C款 paragraph

D款 paragraph

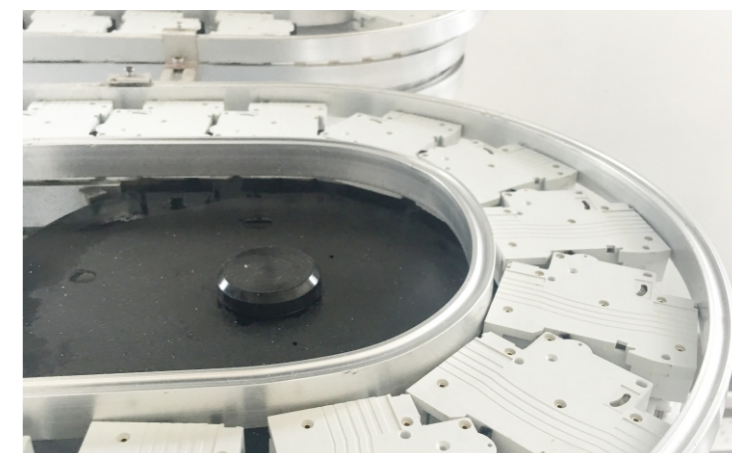
E款 paragraph



高端智能装备生态链 INTELLIGENT EQUIPMENT ECOLOGICAL CHAIN

高低压电器元器件自动化生产线、新能源元器件自动化生产线、低压电器实验室检测设备、焊接类专用设备、激光应用专用设备、机器人应用专用设备、视觉应用专用设备、**物流输送专用设备**、自动化装配及专用设备、自动包装设备、MES智能制造生产过程执行系统、智能仓储、

High and low voltage electrical components automation production line, New energy components automation production line, Low-voltage electrical laboratory testing equipment Special equipment for welding, special equipment for, **Laser application special equipment**, Robot application special equipment, Vision application special equipment, Logistics conveying equipment, Automated assembly and special equipment, Automatic packaging equipment, MES intelligent manufacturing process execution system, Intelligent warehousing,



设备功能介绍 EQUIPMENT FUNCTION INTRODUCTION

具有自动物流、输送、提升、循环、不良品区分、缺料报警等工序的装配、在线检测、实时监控、质量溯源、条码识别、元器件寿命监测、数据存储、MES系统与ERP系统联网、参数任意配方、智慧能源分析与节能管理系统、智能装备服务大数据云平台等功能。

With automatic logistics, conveying, lifting, circulation, defective product differentiation, missing material alarm and other processes of assembly, online detection, real-time monitoring, quality traceability, barcode identification, component life monitoring, data storage, MES system and ERP system networking, parameters arbitrary recipe, intelligent energy analysis and energy saving management system, intelligent equipment services big data cloud platform and other functions.

设备技术参数 EQUIPMENT TECHNICAL PARAMETERS

- 1、设备输入电压 $380V \pm 10\%$ ， $50Hz$ ； $\pm 1Hz$ ；
- 2、设备兼容性 & 物流速度：可根据客户要求定做。
- 3、物流输送选配：根据产品的不同生产工艺及要求，可以采用平面皮带输送线、链板输送线、倍速链输送线、提升机+输送线、循环输送线等方式实现。
- 4、设备输送线尺寸及负载可根据产品型号定做。
- 5、设备具有故障报警、压力监测等报警显示功能。
- 6、中文版和英文版两种操作系统。
- 7、所有核心配件均采用意大利、瑞典、德国、日本、美国、台湾等不同国家和地区的进口配件。
- 8、设备可选配《智慧能源分析与节能管理系统》和《智能装备服务大数据云平台》等功能。
- 9、具有独立的自主知识产权。

- 1 · Equipment input voltage $380V \pm 10\%$, $50Hz$; $\pm 1Hz$;
- 2 · Equipment compatibility and logistics speed: can be customized according to customer requirements.
- 3 · Logistics conveying option: according to the different production process and requirements of the product, it can be realized by flat belt conveying line, chain plate conveying line, timespeed chain conveying line, elevator + conveying line, circulation conveying line, etc.
- 4 · The size and load of the equipment conveying line can be customized according to the product model.
- 5 · The equipment has alarm display functions such as fault alarm and pressure monitoring.
- 6 · Two kinds of operating systems, Chinese and English.
- 7 · All core parts are imported from different countries and regions such as Italy, Sweden, Germany, Japan, USA, Taiwan, etc.
- 8 · The equipment can be equipped with optional functions such as "intelligent energy analysis and energy saving management system" and "intelligent equipment service big data cloud platform".
- 9 · With independent intellectual property rights.



物流输送专用设备

Logistics conveying special equipment



系统特点 SYSTEM FEATURES

采用多规格混合生产、自动化、信息化、模块化、柔性化、定制化、可视化、一键切换、远程维护设计、预警通知、评估报告、数据采集与处理、全局检测管理、设备全生命周期管理等。

Adopting multi-spec mixed production, automation, informatization, modularization, Flexibility, customization, Visualization, One-click switching, Remote maintenance design, Early warning notification, assessment reports, data collection and processing, Global detection management, Equipment lifecycle management, etc.



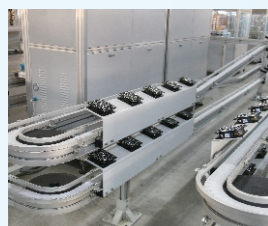
A款 paragraph

B款 paragraph

C款 paragraph

D款 paragraph

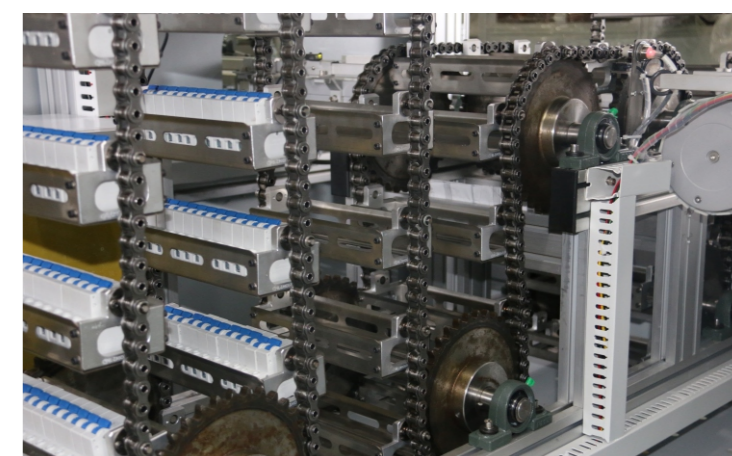
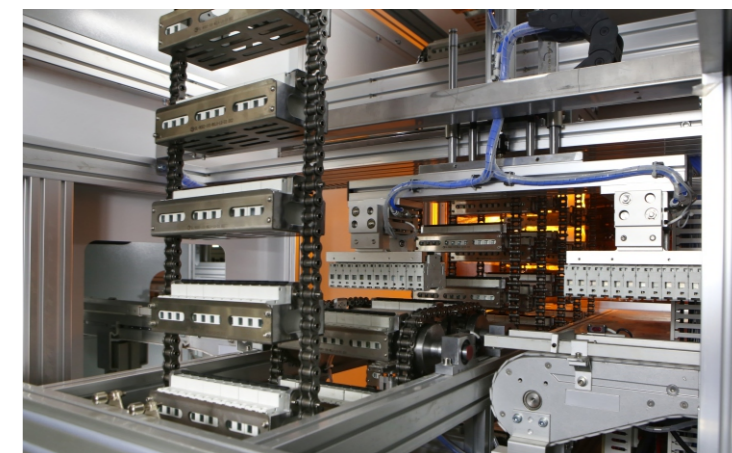
E款 paragraph



高端智能装备生态链 INTELLIGENT EQUIPMENT ECOLOGICAL CHAIN

高低压电器元器件自动化生产线、新能源元器件自动化生产线、低压电器实验室检测设备、焊接类专用设备、激光应用专用设备、机器人应用专用设备、视觉应用专用设备、**物流输送专用设备**、自动化装配及专用设备、自动包装设备、MES智能制造生产过程执行系统、智能仓储、

High and low voltage electrical components automation production line, New energy components automation production line, Low-voltage electrical laboratory testing equipment Special equipment for welding, special equipment for, **Laser application special equipment**, Robot application special equipment, Vision application special equipment, Logistics conveying equipment, Automated assembly and special equipment, Automatic packaging equipment, MES intelligent manufacturing process execution system, Intelligent warehousing,



设备功能介绍 EQUIPMENT FUNCTION INTRODUCTION

具有自动物流、输送、提升、循环、不良品区分、缺料报警等工序的装配、在线检测、实时监控、质量溯源、条码识别、元器件寿命监测、数据存储、MES系统与ERP系统联网、参数任意配方、智慧能源分析与节能管理系统、智能装备服务大数据云平台等功能。

With automatic logistics, conveying, lifting, circulation, defective product differentiation, missing material alarm and other processes of assembly, online detection, real-time monitoring, quality traceability, barcode identification, component life monitoring, data storage, MES system and ERP system networking, parameters arbitrary recipe, intelligent energy analysis and energy saving management system, intelligent equipment services big data cloud platform and other functions.

设备技术参数 EQUIPMENT TECHNICAL PARAMETERS

- 1、设备输入电压380V±10%，50Hz；±1Hz；
- 2、设备兼容性 & 物流速度：可根据客户要求定做。
- 3、物流输送选配：根据产品的不同生产工艺及要求，可以采用平面皮带输送线、链板输送线、倍速链输送线、提升机+输送线、循环输送线等方式实现。
- 4、设备输送线尺寸及负载可根据产品型号定做。
- 5、设备具有故障报警、压力监测等报警显示功能。
- 6、中文版和英文版两种操作系统。
- 7、所有核心配件均采用意大利、瑞典、德国、日本、美国、台湾等不同国家和地区的进口配件。
- 8、设备可选配《智慧能源分析与节能管理系统》和《智能装备服务大数据云平台》等功能。
- 9、具有独立的自主知识产权。

- 1 · Equipment input voltage 380V±10%, 50Hz; ±1Hz;
- 2 · Equipment compatibility and logistics speed: can be customized according to customer requirements.
- 3 · Logistics conveying option: according to the different production process and requirements of the product, it can be realized by flat belt conveying line, chain plate conveying line, timespeed chain conveying line, elevator + conveying line, circulation conveying line, etc.
- 4 · The size and load of the equipment conveying line can be customized according to the product model.
- 5 · The equipment has alarm display functions such as fault alarm and pressure monitoring.
- 6 · Two kinds of operating systems, Chinese and English.
- 7 · All core parts are imported from different countries and regions such as Italy, Sweden, Germany, Japan, USA, Taiwan, etc.
- 8 · The equipment can be equipped with optional functions such as "intelligent energy analysis and energy saving management system" and "intelligent equipment service big data cloud platform".
- 9 · With independent intellectual property rights.



物流输送专用设备

Logistics conveying special equipment

D

系统特点 SYSTEM FEATURES

采用多规格混合生产、自动化、信息化、模块化、柔性化、定制化、可视化、一键切换、远程维护设计、预警通知、评估报告、数据采集与处理、全局检测管理、设备全生命周期管理等。

Adopting multi-spec mixed production, automation, informatization, modularization, Flexibility, customization, Visualization, One-click switching, Remote maintenance design, Early warning notification, assessment reports, data collection and processing, Global detection management, Equipment lifecycle management, etc.



A款 paragraph

B款 paragraph

C款 paragraph

D款 paragraph

E款 paragraph



高端智能装备生态链 INTELLIGENT EQUIPMENT ECOLOGICAL CHAIN

高低压电器元器件自动化生产线、新能源元器件自动化生产线、低压电器实验室检测设备、焊接类专用设备、激光应用专用设备、机器人应用专用设备、视觉应用专用设备、**物流输送专用设备**、自动化装配及专用设备、自动包装设备、MES智能制造生产过程执行系统、智能仓储、

High and low voltage electrical components automation production line, New energy components automation production line, Low-voltage electrical laboratory testing equipment Special equipment for welding, special equipment for, **Laser application special equipment**, Robot application special equipment, Vision application special equipment, Logistics conveying equipment, Automated assembly and special equipment, Automatic packaging equipment, MES intelligent manufacturing process execution system, Intelligent warehousing,



设备功能介绍 EQUIPMENT FUNCTION INTRODUCTION

具有自动物流、输送、提升、循环、不良品区分、缺料报警等工序的装配、在线检测、实时监控、质量溯源、条码识别、元器件寿命监测、数据存储、MES系统与ERP系统联网、参数任意配方、智慧能源分析与节能管理系统、智能装备服务大数据云平台等功能。

With automatic logistics, conveying, lifting, circulation, defective product differentiation, missing material alarm and other processes of assembly, online detection, real-time monitoring, quality traceability, barcode identification, component life monitoring, data storage, MES system and ERP system networking, parameters arbitrary recipe, intelligent energy analysis and energy saving management system, intelligent equipment services big data cloud platform and other functions.

设备技术参数 EQUIPMENT TECHNICAL PARAMETERS

- 1、设备输入电压380V±10%，50Hz；±1Hz；
- 2、设备兼容性 & 物流速度：可根据客户要求定做。
- 3、物流输送选配：根据产品的不同生产工艺及要求，可以采用平面皮带输送线、链板输送线、倍速链输送线、提升机+输送线、循环输送线等方式实现。
- 4、设备输送线尺寸及负载可根据产品型号定做。
- 5、设备具有故障报警、压力监测等报警显示功能。
- 6、中文版和英文版两种操作系统。
- 7、所有核心配件均采用意大利、瑞典、德国、日本、美国、台湾等不同国家和地区的进口配件。
- 8、设备可选配《智慧能源分析与节能管理系统》和《智能装备服务大数据云平台》等功能。
- 9、具有独立的自主知识产权。

- 1 · Equipment input voltage 380V±10%, 50Hz; ±1Hz;
- 2 · Equipment compatibility and logistics speed: can be customized according to customer requirements.
- 3 · Logistics conveying option: according to the different production process and requirements of the product, it can be realized by flat belt conveying line, chain plate conveying line, timespeed chain conveying line, elevator + conveying line, circulation conveying line, etc.
- 4 · The size and load of the equipment conveying line can be customized according to the product model.
- 5 · The equipment has alarm display functions such as fault alarm and pressure monitoring.
- 6 · Two kinds of operating systems, Chinese and English.
- 7 · All core parts are imported from different countries and regions such as Italy, Sweden, Germany, Japan, USA, Taiwan, etc.
- 8 · The equipment can be equipped with optional functions such as "intelligent energy analysis and energy saving management system" and "intelligent equipment service big data cloud platform".
- 9 · With independent intellectual property rights.



物流输送专用设备

Logistics conveying special equipment

E

系统特点 SYSTEM FEATURES

采用多规格混合生产、自动化、信息化、模块化、柔性化、定制化、可视化、一键切换、远程维护设计、预警通知、评估报告、数据采集与处理、全局检测管理、设备全生命周期管理等。

Adopting multi-spec mixed production, automation, informatization, modularization, Flexibility, customization, Visualization, One-click switching, Remote maintenance design, Early warning notification, assessment reports, data collection and processing, Global detection management, Equipment lifecycle management, etc.



A款 paragraph

B款 paragraph

C款 paragraph

D款 paragraph

E款 paragraph



高端智能装备生态链 INTELLIGENT EQUIPMENT ECOLOGICAL CHAIN

高低压电器元器件自动化生产线、新能源元器件自动化生产线、低压电器实验室检测设备、焊接类专用设备、激光应用专用设备、机器人应用专用设备、视觉应用专用设备、**物流输送专用设备**、自动化装配及专用设备、自动包装设备、MES智能制造生产过程执行系统、智能仓储、

High and low voltage electrical components automation production line, New energy components automation production line, Low-voltage electrical laboratory testing equipment Special equipment for welding, special equipment for, **Laser application special equipment**, Robot application special equipment, Vision application special equipment, Logistics conveying equipment, Automated assembly and special equipment, Automatic packaging equipment, MES intelligent manufacturing process execution system, Intelligent warehousing,



设备功能介绍 EQUIPMENT FUNCTION INTRODUCTION

具有自动物流、输送、提升、循环、不良品区分、缺料报警等工序的装配、在线检测、实时监控、质量溯源、条码识别、元器件寿命监测、数据存储、MES系统与ERP系统联网、参数任意配方、智慧能源分析与节能管理系统、智能装备服务大数据云平台等功能。

With automatic logistics, conveying, lifting, circulation, defective product differentiation, missing material alarm and other processes of assembly, online detection, real-time monitoring, quality traceability, barcode identification, component life monitoring, data storage, MES system and ERP system networking, parameters arbitrary recipe, intelligent energy analysis and energy saving management system, intelligent equipment services big data cloud platform and other functions.

设备技术参数 EQUIPMENT TECHNICAL PARAMETERS

- 1、设备输入电压 $380V \pm 10\%$ ，50Hz； $\pm 1Hz$ ；
- 2、设备兼容性 & 物流速度：可根据客户要求定做。
- 3、物流输送选配：根据产品的不同生产工艺及要求，可以采用平面皮带输送线、链板输送线、倍速链输送线、提升机+输送线、循环输送线等方式实现。
- 4、设备输送线尺寸及负载可根据产品型号定做。
- 5、设备具有故障报警、压力监测等报警显示功能。
- 6、中文版和英文版两种操作系统。
- 7、所有核心配件均采用意大利、瑞典、德国、日本、美国、台湾等不同国家和地区的进口配件。
- 8、设备可选配《智慧能源分析与节能管理系统》和《智能装备服务大数据云平台》等功能。
- 9、具有独立的自主知识产权。

- 1 · Equipment input voltage $380V \pm 10\%$, 50Hz; $\pm 1Hz$;
- 2 · Equipment compatibility and logistics speed: can be customized according to customer requirements.
- 3 · Logistics conveying option: according to the different production process and requirements of the product, it can be realized by flat belt conveying line, chain plate conveying line, timespeed chain conveying line, elevator + conveying line, circulation conveying line, etc.
- 4 · The size and load of the equipment conveying line can be customized according to the product model.
- 5 · The equipment has alarm display functions such as fault alarm and pressure monitoring.
- 6 · Two kinds of operating systems, Chinese and English.
- 7 · All core parts are imported from different countries and regions such as Italy, Sweden, Germany, Japan, USA, Taiwan, etc.
- 8 · The equipment can be equipped with optional functions such as "intelligent energy analysis and energy saving management system" and "intelligent equipment service big data cloud platform".
- 9 · With independent intellectual property rights.

