

企业简介 >>>

BENLONG AUTOMATION COMPANY PROFILE

奔龙自动化科技有限公司成立于2008年，以自动化、智能化、机器人、传感器、物联网、MES系统技术为核心，为客户提供智能装备制造及系统集成解决方案的国家级高新技术企业。主营产品有：高低压电器元器件自动化生产线、新能源元器件自动化生产线、充电桩自动化生产线、锂电池自动化拼装生产线、自动化焊接设备等，公司产品远销全国各地，同时出口到东南亚、中东、北非等30多个国家和地区。



Benlong Automation Technology Co., Ltd. was established in 2008, with automation, intelligence, robotics, sensors, Internet of Things, and MES system technology as its core, providing customers with intelligent equipment manufacturing and system integration solutions as a national high-tech enterprise. Our main products include: automated production lines for high and low voltage electrical components, automated production lines for new energy components, automated production lines for charging piles, automated assembly production lines for lithium batteries, automated welding equipment, etc. Our products are exported to various parts of the country and are also exported to more than 30 countries and regions such as Southeast Asia, the Middle East, and North Africa.



2008 年 奔龙自动化创业 Benlong Entrepreneurship	80+ 名 技术专员 technical attache	3+ 家 战略合作单位 Strategic Partners	2+ 所 科研院所及大专院校 Research Institutions	30+ 个 业务遍及国家和地区 Business covers countries and regions
20+ 家 外贸合作企业 foreign enterprise	28+ 家 上市公司合作 Listed company cooperation	1200+ 家 国内公司合作 Cooperative companies	265+ 个 知识产权 intellectual property	2+ 个 企业资质 Qualifications

奔龙自动化科技有限公司
Benlong Automation Technology Co., Ltd

SINCE 2008

+86-577-62777062 4008-600-680
E-mail: zzl@benlongkj.cn http://www.benlongkj.com



中文 抖音 English Tik tok WhatsApp



HIGH-END INTELLIGENT EQUIPMENT OVERALL SOLUTIONS
浙江省科学技术进步奖 | 科技人员突出贡献奖 | 专利示范企业
National High tech Enterprise, Zhejiang Provincial Science and Technology Progress Award, Outstanding Contribution Award for Scientific and Technological Personnel, Patent Demonstration Enterprise



视觉应用专用设备

SPECIALIZED EQUIPMENT FOR VISION APPLICATIONS

CONTENTS

目录

视觉应用专用设备 SPECIALIZED EQUIPMENT FOR VISION APPLICATIONS

MCB微型断路器自动装配检测设备 MCB miniature circuit breaker automatic assembly and testing equipment	001/002
MCB微型断路器视觉检测设备 MCB miniature circuit breaker visual inspection equipment	003/004
MCB微型断路器自动穿铆钉检测设备 MCB miniature circuit breaker automatic riveting inspection equipment	005/006
MCB微型断路器自动铆钉检测设备 MCB miniature circuit breaker automatic riveting testing equipment	007/008
MCCB塑壳断路器自动激光、移印、检测设备 MCCB plastic case circuit breaker automatic laser, pad printing, testing equipment	009/010
MCCB塑壳断路器自动移印检测设备 MCCB plastic case circuit breaker automatic pad printing inspection equipment	011/012
银点正反面自动检测设备 Silver dot positive and negative automatic testing equipment	013/014
线圈剥皮自动检测设备 Coil stripping automatic inspection equipment	015/016
自动插芯单元-视觉检测设备 Automatic core insertion unit-visual inspection equipment	017/018
自动装卡扣单元-视觉检测设备 Automatic snap-fit unit-visual inspection equipment	019/020
银点、静触头自动焊接设备 Silver point, static contact automatic welding equipment	021/022

视觉应用专用设备 specialized equipment for vision applications

MCB微型断路器自动装配检测设备
MCB miniature circuit breaker automatic assembly and testing equipment



MCB微型断路器视觉检测设备
MCB miniature circuit breaker visual inspection equipment



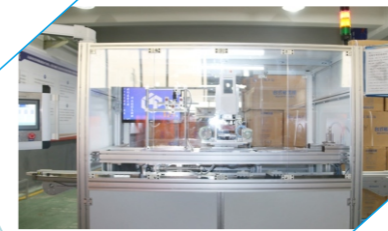
MCB微型断路器自动穿铆钉检测设备
MCB miniature circuit breaker automatic riveting inspection equipment



MCB微型断路器自动铆钉检测设备
MCB miniature circuit breaker automatic riveting testing equipment



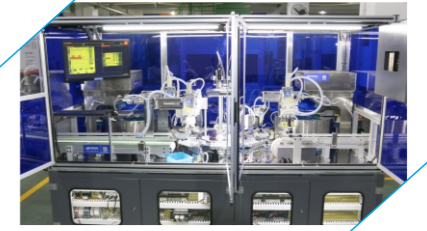
MCCB塑壳断路器自动激光、移印、检测设备
MCCB molded case circuit breaker automatic laser, pad printing, testing equipment



银点、静触头自动焊接设备
Silver point, static contact automatic welding equipment



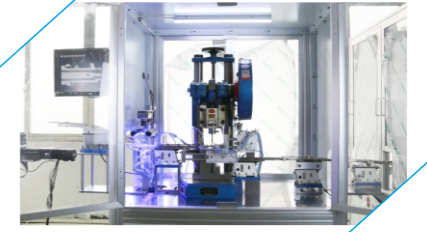
自动装卡扣单元-视觉检测设备
Automatic snap-fit unit-visual inspection equipment



自动插芯单元-视觉检测设备
Automatic core insertion unit-visual inspection equipment



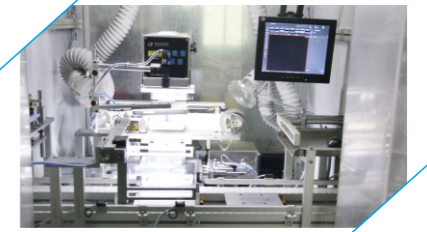
线圈剥皮自动检测设备
Coil stripping automatic testing equipment



银点正反面自动检测设备
Silver dot positive and negative automatic testing equipment



MCCB塑壳断路器自动移印检测设备
MCCB plastic case circuit breaker automatic pad printing inspection equipment



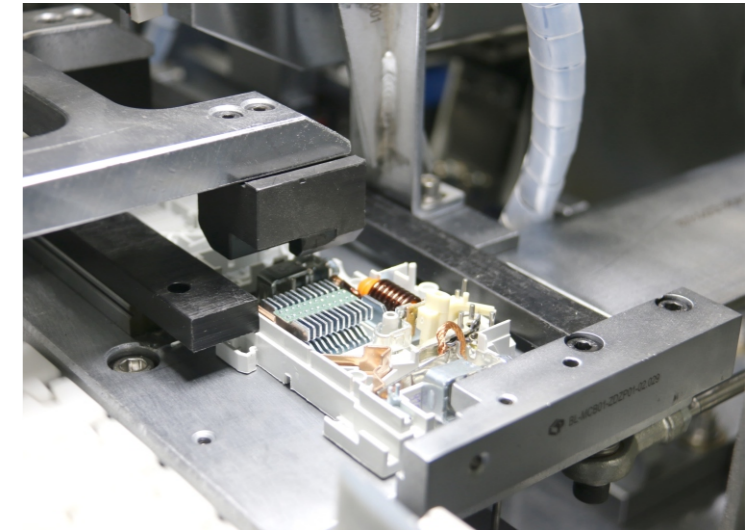
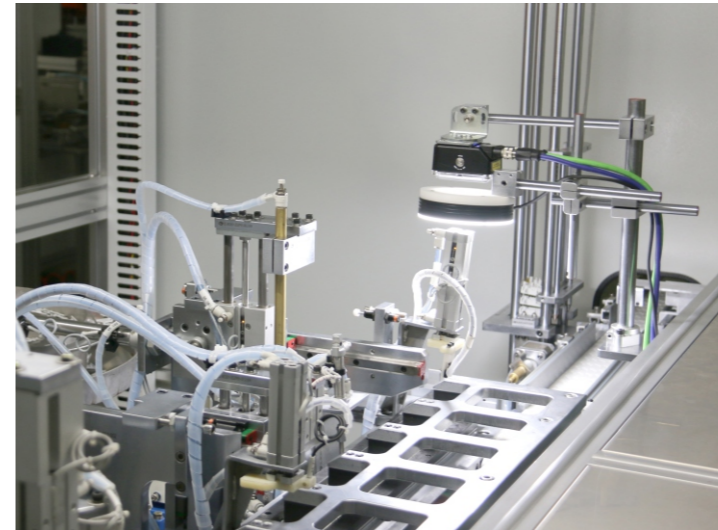
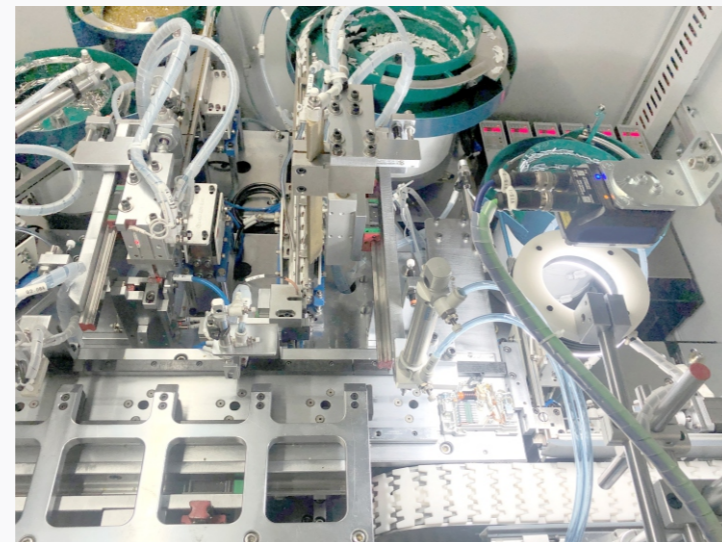
视觉应用专用设备 SPECIALIZED EQUIPMENT FOR VISION APPLICATIONS

MCB微型断路器自动装配检测设备 MCB miniature circuit breaker automatic assembly and testing equipment

系统特点 SYSTEM FEATURES

采用多规格混合生产、自动化、信息化、模块化、柔性化、定制化、可视化、一键切换、远程维护设计、预警通知、评估报告、数据采集与处理、全局检测管理、设备全生命周期管理等。

Adopting multi-spec mixed production, automation, informatization, modularization, Flexibility, customization, Visualization, One-click switching, Remote maintenance design, Early warning notification, assessment reports, data collection and processing, Global detection management, Equipment lifecycle management, etc.



设备功能介绍 EQUIPMENT FUNCTION INTRODUCTION

具有自动上料、零部件成型、装配、检测、下料、缺料报警、90°旋转等工序的在线监测、实时监控、质量溯源、条码识别、关键元器件寿命监测、数据存储、MES系统与ERP系统联网、参数任意配方、智慧能源分析与节能管理系统、智能装备服务大数据云平台等功能。

It has the functions of online monitoring, real-time monitoring, quality traceability, barcode identification, key component life monitoring, data storage, MES system networking with ERP system, parameter arbitrary recipe, intelligent energy analysis and energy saving management system, intelligent equipment service big data cloud platform, etc. for automatic loading, component forming, assembly, testing, discharging, missing material alarm, 90° rotation and other processes.

设备技术参数 EQUIPMENT TECHNICAL PARAMETERS

- 1、设备输入电压220V±10%，50Hz；±1Hz；
- 2、设备兼容极数：1P、2P、3P、4P、1P+模块、2P+模块、3P+模块、4P+模块。
- 3、设备生产节拍：1秒/极、1.2秒/极、1.5秒/极、2秒/极、3秒/极；五种不同规格设备。
- 4、同一壳架产品，不同极数可以一键切换或扫码切换均可；切换产品需要人工更换模具或夹具。
- 5、装配方式：人工装配、自动装配两种可任意选配。
- 6、设备夹具可根据产品型号定做。
- 7、设备具有故障报警、压力监测等报警显示功能。
- 8、中文版和英文版两种操作系统。
- 9、所有核心配件均采用意大利、瑞典、德国、日本、美国、台湾等不同国家和地区的进口配件。
- 10、设备可选配《智慧能源分析与节能管理系统》和《智能装备服务大数据云平台》等功能。
- 11、具有独立的自主知识产权：

- 1 · Device input voltage 220V±10%, 50Hz; ±1Hz;
- 2 · Equipment compatible poles: 1P, 2P, 3P, 4P, 1P+module, 2P+module, 3P+module, 4P+module.
- 3 · Equipment production beat: 1sec/pole, 1.2sec/pole, 1.5sec/pole, 2sec/pole, 3sec/pole; five different specifications of equipment.
- 4 · The same shell frame products, different poles can be switched with one key or sweeping code; switching products requires manual replacement of molds or fixtures.
- 5 · Assembly mode: manual assembly and automatic assembly can be optional.
- 6 · Equipment fixture can be customized according to the product model.
- 7 · Equipment with fault alarm, pressure monitoring and other alarm display functions.
- 8 · Two kinds of operating systems, Chinese and English.
- 9 · All core parts are imported from different countries and regions such as Italy, Sweden, Germany, Japan, USA, Taiwan, etc.
- 10 · The equipment can be equipped with optional functions such as "intelligent energy analysis and energy saving management system" and "intelligent equipment service big data cloud platform".
- 11 · With independent independent intellectual property rights:



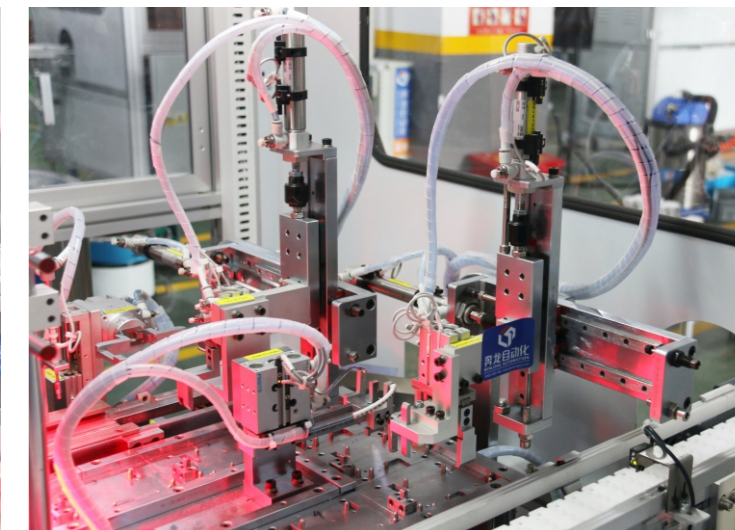
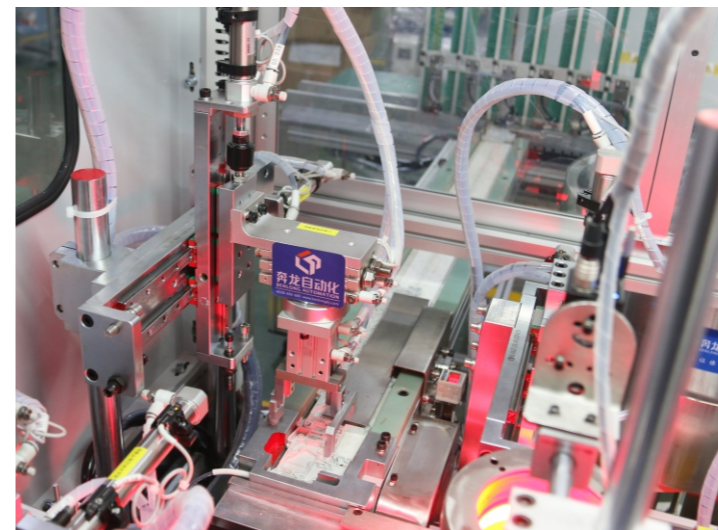
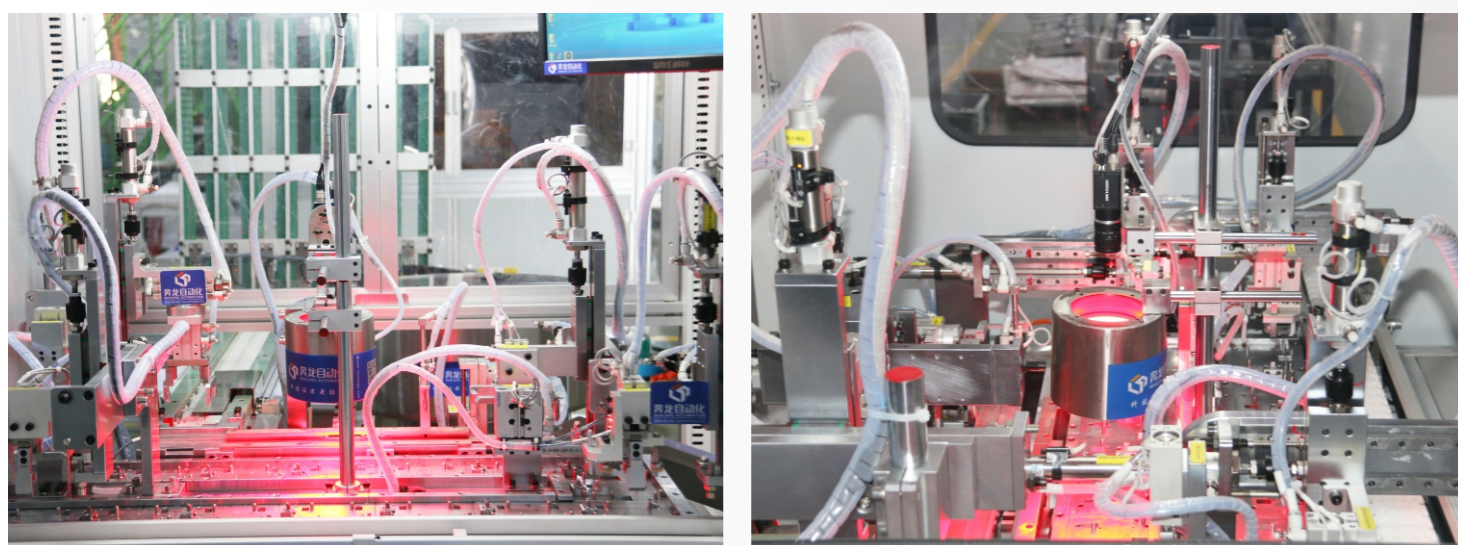
视觉应用专用设备 SPECIALIZED EQUIPMENT FOR VISION APPLICATIONS

MCB微型断路器视觉检测设备 MCB miniature circuit breaker visual inspection equipment

系统特点 SYSTEM FEATURES

采用多规格混合生产、自动化、信息化、模块化、柔性化、定制化、可视化、一键切换、远程维护设计、预警通知、评估报告、数据采集与处理、全局检测管理、设备全生命周期管理等。

Adopting multi-spec mixed production, automation, informatization, modularization, Flexibility, customization, Visualization, One-click switching, Remote maintenance design, Early warning notification, assessment reports, data collection and processing, Global detection management, Equipment lifecycle management, etc.



设备功能介绍 EQUIPMENT FUNCTION INTRODUCTION

具有自动装配、零件有无检测、CCD尺寸检测、不良品区分、缺料报警、翻转竖立等工序的在线监测、实时监控、质量溯源、条码识别、元器件寿命监测、数据存储、MES系统与ERP系统联网、参数任意配方、智慧能源分析与节能管理系统、智能装备服务大数据云平台等功能。

It has the functions of online monitoring, real-time monitoring, quality traceability, barcode identification, component life monitoring, data storage, MES system networking with ERP system, parameter arbitrary recipe, intelligent energy analysis and energy saving management system, intelligent equipment service big data cloud platform, etc. for automatic assembly, parts with and without detection, CCD size detection, defective product differentiation, missing material alarm, flip erection and other processes.

设备技术参数 EQUIPMENT TECHNICAL PARAMETERS

- 1、设备输入电压220V/380V±10%，50Hz；±1Hz；
- 2、设备兼容极数：1P、2P、3P、4P、5P
- 3、设备生产节拍：1秒/极、1.2秒/极、1.5秒/极、2秒/极、3秒/极；五种不同规格设备。
- 4、同一壳架产品，不同极数可以一键切换或扫码切换均可；不同壳架产品需要人工更换模具或夹具。
- 5、铆钉供料方式为振动盘供料；噪音≤80分贝；铆钉数量及模具可根据产品型号定做。
- 6、视觉检测选配：根据产品的不同生产工艺及要求，可以采用高精度视觉、机器人+高精度视觉等方式实现。
- 7、设备具有故障报警、压力监测等报警显示功能。
- 8、中文版和英文版两种操作系统。
- 9、所有核心配件均采用意大利、瑞典、德国、日本、美国、台湾等不同国家和地区的进口配件。
- 10、设备可选配《智慧能源分析与节能管理系统》和《智能装备服务大数据云平台》等功能。
- 11、具有独立的自主知识产权。

- 1 · Device input voltage 220V/380V±10%, 50Hz; ±1Hz;
- 2 · Equipment compatible with the number of poles: 1P, 2P, 3P, 4P, 5P
- 3 · Equipment production beat: 1sec/pole, 1.2sec/pole, 1.5sec/pole, 2sec/pole, 3sec/pole; five different specifications of equipment.
- 4 · The same shell frame product, different poles can be switched by one key or sweeping the code to switch; different shell frame products need to manually replace the mold or fixture.
- 5 · The rivet feeding method is vibrating plate feeding; noise ≤ 80 decibels; the number of rivets and molds can be customized according to the product model.
- 6 · Visual inspection option: according to the different production process and requirements of the product, it can be realized by high precision vision, robot + high precision vision, etc.
- 7 · The equipment has alarm display functions such as fault alarm and pressure monitoring.
- 8 · Two kinds of operating systems, Chinese and English.
- 9 · All core parts are imported from different countries and regions such as Italy, Sweden, Germany, Japan, USA, Taiwan, etc.
- 10 · The equipment can be equipped with optional functions such as "intelligent energy analysis and energy saving management system" and "intelligent equipment service big data cloud platform".
- 11 · With independent independent intellectual property rights.



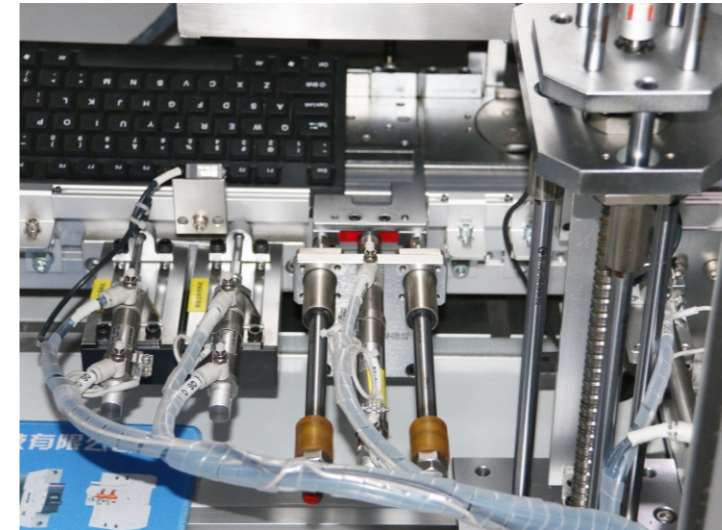
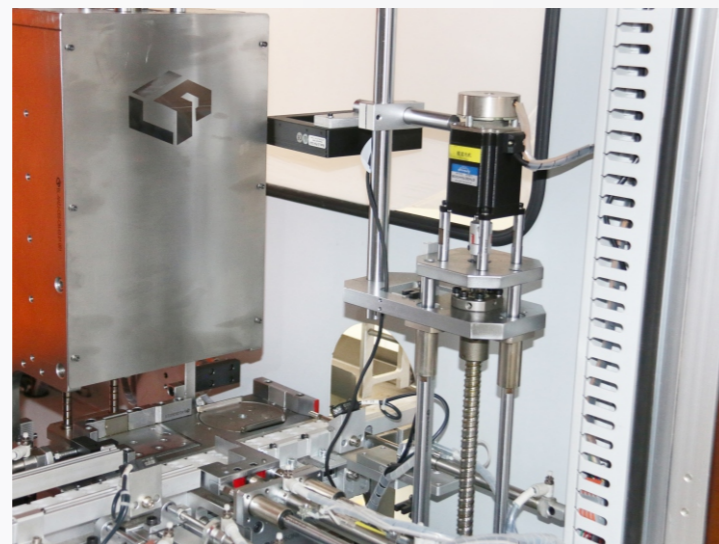
视觉应用专用设备 SPECIALIZED EQUIPMENT FOR VISION APPLICATIONS

MCB微型断路器自动穿铆钉检测设备 MCB miniature circuit breaker automatic riveting testing equipment

系统特点 SYSTEM FEATURES

采用多规格混合生产、自动化、信息化、模块化、柔性化、定制化、可视化、一键切换、远程维护设计、预警通知、评估报告、数据采集与处理、全局检测管理、设备全生命周期管理等。

Adopting multi-spec mixed production, automation, informatization, modularization, Flexibility, customization, Visualization, One-click switching, Remote maintenance design, Early warning notification, assessment reports, data collection and processing, Global detection management, Equipment lifecycle management, etc.



设备功能介绍 EQUIPMENT FUNCTION INTRODUCTION

具有自动穿铆钉铆接、铆钉有无检测、CCD尺寸检测、不良品区分、缺料报警、翻转竖立等工序的在线监测、实时监控、质量溯源、条码识别、元器件寿命监测、数据存储、MES系统与ERP系统联网、参数任意配方、智慧能源分析与节能管理系统、智能装备服务大数据云平台等功能。

It has the functions of online monitoring, real-time monitoring, quality traceability, barcode identification, component life monitoring, data storage, MES system networking with ERP system, parameter arbitrary recipe, intelligent energy analysis and energy saving management system, intelligent equipment service big data cloud platform, etc. for automatic riveting, rivet presence or absence detection, CCD size detection, defective product differentiation, missing material alarm, flip erection and other processes.

设备技术参数 EQUIPMENT TECHNICAL PARAMETERS

- 1、设备输入电压220V/380V±10%，50Hz；±1Hz；
- 2、设备兼容极数：1P、2P、3P、4P、5P
- 3、设备生产节拍：1秒/极、1.2秒/极、1.5秒/极、2秒/极、3秒/极；五种不同规格设备。
- 4、同一壳架产品，不同极数可以一键切换或扫码切换均可；不同壳架产品需要人工更换模具或夹具。
- 5、铆钉供料方式为振动盘供料；噪音≤80分贝；铆钉数量及模具可根据产品型号定做。
- 6、视觉检测选配：根据产品的不同生产工艺及要求，可以采用高精度视觉、机器人+高精度视觉等方式实现。
- 7、设备具有故障报警、压力监测等报警显示功能。
- 8、中文版和英文版两种操作系统。
- 9、所有核心配件均采用意大利、瑞典、德国、日本、美国、台湾等不同国家和地区的进口配件。
- 10、设备可选配《智慧能源分析与节能管理系统》和《智能装备服务大数据云平台》等功能。
- 11、具有独立的自主知识产权。



视觉应用专用设备 SPECIALIZED EQUIPMENT FOR VISION APPLICATIONS

MCB微型断路器自动铆钉检测设备 MCB miniature circuit breaker automatic rivet testing equipment

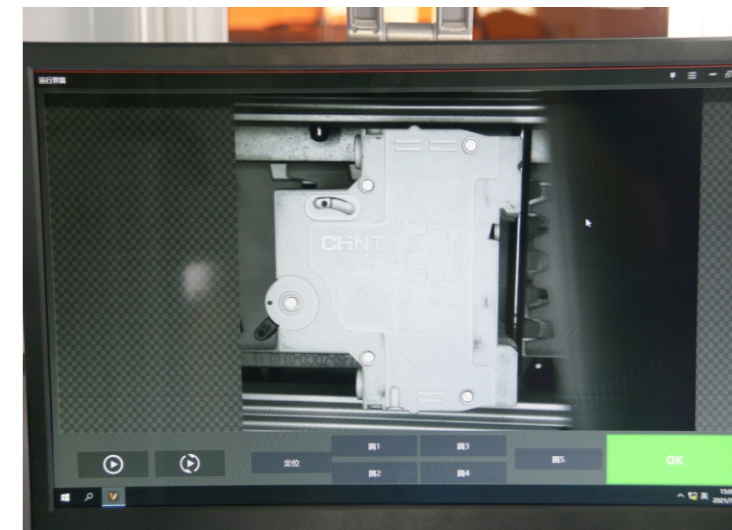
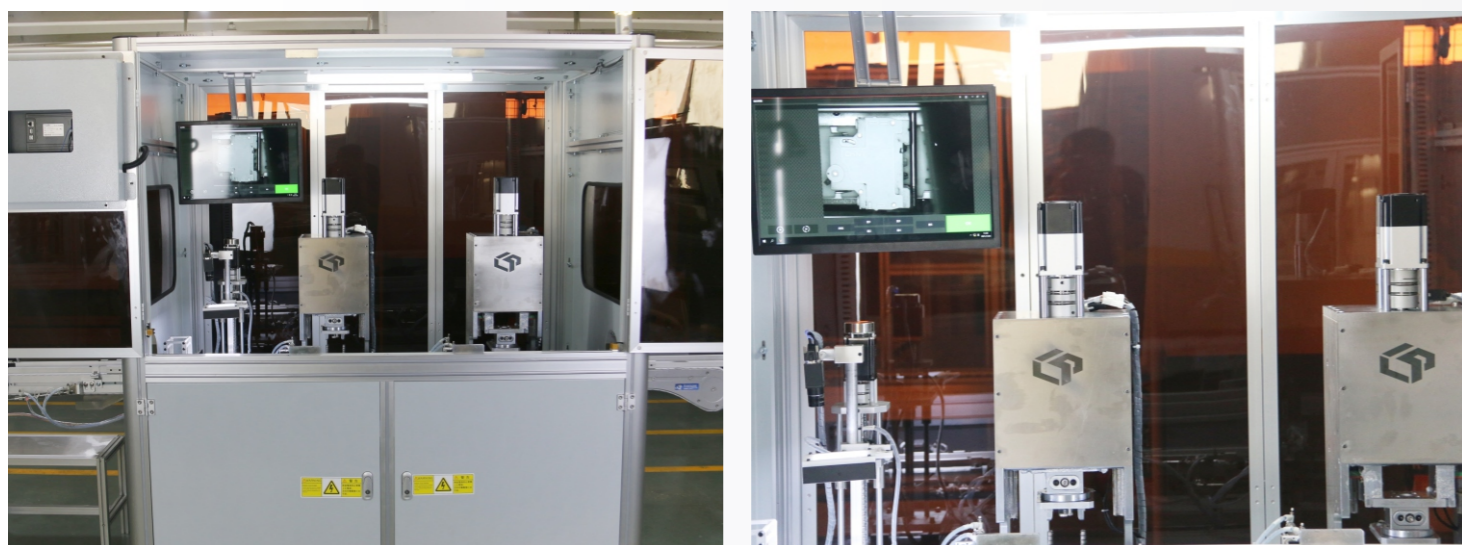
系统特点 SYSTEM FEATURES

采用多规格混合生产、自动化、信息化、模块化、柔性化、定制化、可视化、一键切换、远程维护设计、预警通知、评估报告、数据采集与处理、全局检测管理、设备全生命周期管理等。

Adopting multi-spec mixed production, automation, informatization, modularization, Flexibility, customization, Visualization, One-click switching, Remote maintenance design, Early warning notification, assessment reports, data collection and processing, Global detection management, Equipment lifecycle management, etc.



- 
自动化
Automation
- 
信息化
Informatization
- 
模块化
Modularity
- 
可视化
Visualization
- 
定制化
Customization
- 
柔性化
Flexibility
- 
云计算
Cloud Computing
- 
一键切换
One Click Switch
- 
远程维护
Remote Maintenance
- 
预警通知
Early Warning Notice
- 
评估报告
Evaluation Report
- 
数据采集
Data Acquisition



设备功能介绍 EQUIPMENT FUNCTION INTRODUCTION

具有自动铆钉铆接、铆钉有无检测、CCD尺寸检测、不良品区分、缺料报警、翻转竖立等工序的在线监测、实时监控、质量溯源、条码识别、元器件寿命监测、数据存储、MES系统与ERP系统联网、参数任意配方、智慧能源分析与节能管理系统、智能装备服务大数据云平台等功能。

It has the functions of online monitoring, real-time monitoring, quality traceability, barcode identification, component life monitoring, data storage, MES system networking with ERP system, parameter arbitrary recipe, intelligent energy analysis and energy saving management system, intelligent equipment service big data cloud platform, etc. for automatic riveting, rivet presence or absence detection, CCD size detection, defective product differentiation, missing material alarm, flip erection and other processes.

设备技术参数 EQUIPMENT TECHNICAL PARAMETERS

- 1、设备输入电压220V/380V±10%，50Hz；±1Hz；
- 2、设备兼容极数：1P、2P、3P、4P、5P
- 3、设备生产节拍：1秒/极、1.2秒/极、1.5秒/极、2秒/极、3秒/极；五种不同规格设备。
- 4、同一壳架产品，不同极数可以一键切换或扫码切换均可；不同壳架产品需要人工更换模具或夹具。
- 5、铆钉供料方式为振动盘供料；噪音≤80分贝；铆钉数量及模具可根据产品型号定做。
- 6、视觉检测选配：根据产品的不同生产工艺及要求，可以采用高精度视觉、机器人+高精度视觉等方式实现。
- 7、设备具有故障报警、压力监测等报警显示功能。
- 8、中文版和英文版两种操作系统。
- 9、所有核心配件均采用意大利、瑞典、德国、日本、美国、台湾等不同国家和地区的进口配件。
- 10、设备可选配《智慧能源分析与节能管理系统》和《智能装备服务大数据云平台》等功能。
- 11、具有独立的自主知识产权。

- 1 · Device input voltage 220V/380V±10%, 50Hz; ±1Hz;
- 2 · Equipment compatible with the number of poles: 1P, 2P, 3P, 4P, 5P
- 3 · Equipment production beat: 1sec/pole, 1.2sec/pole, 1.5sec/pole, 2sec/pole, 3sec/pole; five different specifications of equipment.
- 4 · The same shell frame product, different poles can be switched by one key or sweeping the code to switch; different shell frame products need to manually replace the mold or fixture.
- 5 · The rivet feeding method is vibrating plate feeding; noise ≤ 80 decibels; the number of rivets and molds can be customized according to the product model.
- 6 · Visual inspection option: according to the different production process and requirements of the product, it can be realized by high precision vision, robot + high precision vision, etc.
- 7 · The equipment has alarm display functions such as fault alarm and pressure monitoring.
- 8 · Two kinds of operating systems, Chinese and English.
- 9 · All core parts are imported from different countries and regions such as Italy, Sweden, Germany, Japan, USA, Taiwan, etc.
- 10 · The equipment can be equipped with optional functions such as "intelligent energy analysis and energy saving management system" and "intelligent equipment service big data cloud platform".
- 11 · With independent independent intellectual property rights.



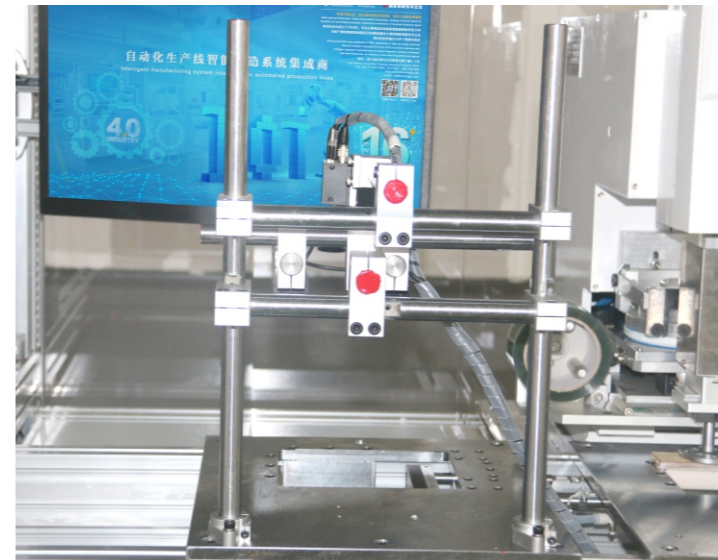
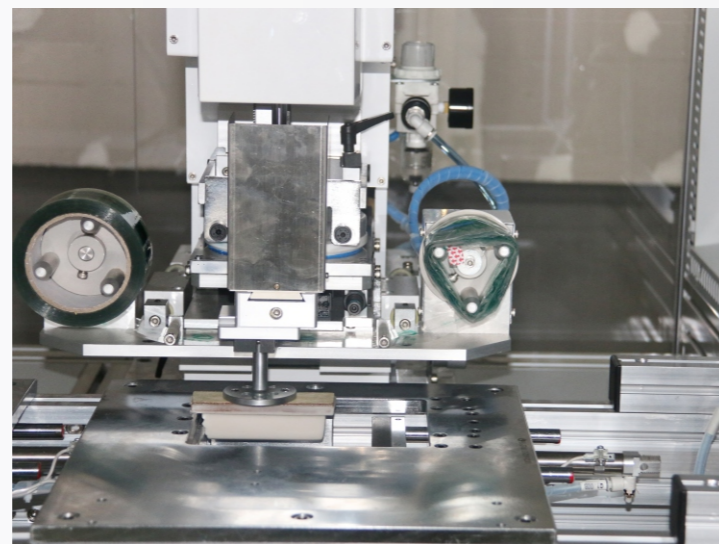
视觉应用专用设备 SPECIALIZED EQUIPMENT FOR VISION APPLICATIONS

MCCB塑壳断路器自动激光、移印、检测设备 MCCB plastic case circuit breaker automatic laser, pad printing and testing equipment

系统特点 SYSTEM FEATURES

采用多规格混合生产、自动化、信息化、模块化、柔性化、定制化、可视化、一键切换、远程维护设计、预警通知、评估报告、数据采集与处理、全局检测管理、设备全生命周期管理等。

Adopting multi-spec mixed production, automation, informatization, modularization, Flexibility, customization, Visualization, One-click switching, Remote maintenance design, Early warning notification, assessment reports, data collection and processing, Global detection management, Equipment lifecycle management, etc.



设备功能介绍 EQUIPMENT FUNCTION INTRODUCTION

具有自动激光、移印、CCD视觉检测、不良品区分、缺料报警、不良品回流返工等工序的在线监测、实时监控、质量溯源、条码识别、关键元器件寿命监测、数据存储、MES系统与ERP系统联网、参数任意配方、智慧能源分析与节能管理系统、智能装备服务大数据云平台等功能。

It has the functions of online monitoring, real-time monitoring, quality traceability, barcode identification, key component life monitoring, data storage, MES system networking with ERP system, parameter arbitrary recipe, intelligent energy analysis and energy saving management system, intelligent equipment service big data cloud platform, etc. for automatic laser, pad printing, CCD visual inspection, defective product differentiation, missing material alarm, defective product rework.

设备技术参数 EQUIPMENT TECHNICAL PARAMETERS

- 1、设备输入电压380V±10%，50Hz；±1Hz；
 - 2、设备兼容极数：1P、2P、3P、4P、1P+模块、2P+模块、3P+模块、4P+模块
 - 3、设备生产节拍：1秒/极、1.2秒/极、1.5秒/极、2秒/极、3秒/极；五种不同规格设备。
 - 4、同一壳架产品，不同极数可以一键切换或扫码切换均可；不同壳架产品需要人工更换模具或夹具。
 - 5、不良品检测方式为：CCD视觉检测。
 - 6、移印机为环保移印机，自带清洁系统和X、Y、Z调节机构。
 - 7、设备具有故障报警、压力监测等报警显示功能。
 - 8、中文版和英文版两种操作系统。
 - 9、所有核心配件均采用意大利、瑞典、德国、日本、美国、台湾等不同国家和地区的进口配件。
 - 10、设备可选配《智慧能源分析与节能管理系统》和《智能装备服务大数据云平台》等功能。
 - 11、具有独立的自主知识产权。
- 1 · Device input voltage 380V±10%, 50Hz; ±1Hz;
 2 · Equipment compatible poles: 1P, 2P, 3P, 4P, 1P+module, 2P+module, 3P+module, 4P+module
 3 · Equipment production beat: 1sec/pole, 1.2sec/pole, 1.5sec/pole, 2sec/pole, 3sec/pole; five different specifications of equipment.
 4 · The same shell frame product, different poles can be switched by one key or sweeping the code to switch; different shell frame products need to manually replace the mold or fixture.
 5 · Defective product detection method is: CCD visual detection.
 6 · The pad printing machine is environmental protection pad printing machine, with its own cleaning system and X, Y, Z adjustment mechanism.
 7 · The equipment has alarm display function such as fault alarm and pressure monitoring.
 8 · Two operating systems, Chinese and English.
 9 · All core parts are imported from different countries and regions such as Italy, Sweden, Germany, Japan, USA, Taiwan, etc.
 10 · The equipment can be equipped with optional functions such as "intelligent energy analysis and energy saving management system" and "intelligent equipment service big data cloud platform".
 11 · With independent independent intellectual property rights.



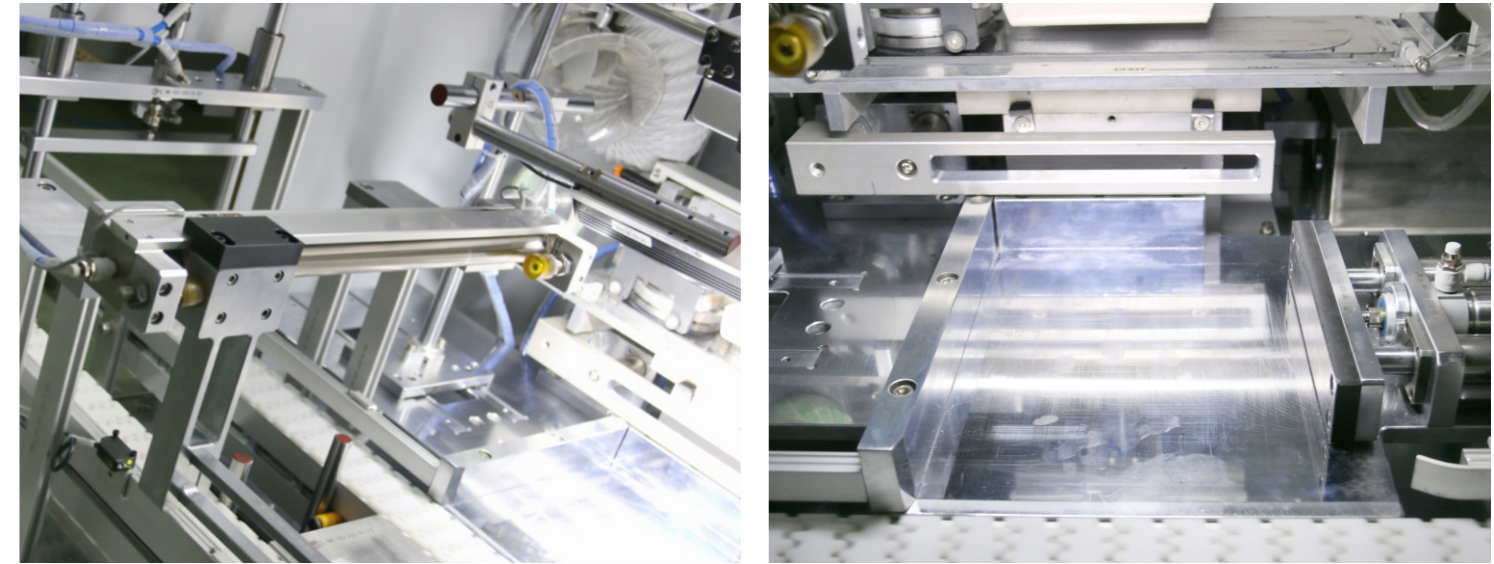
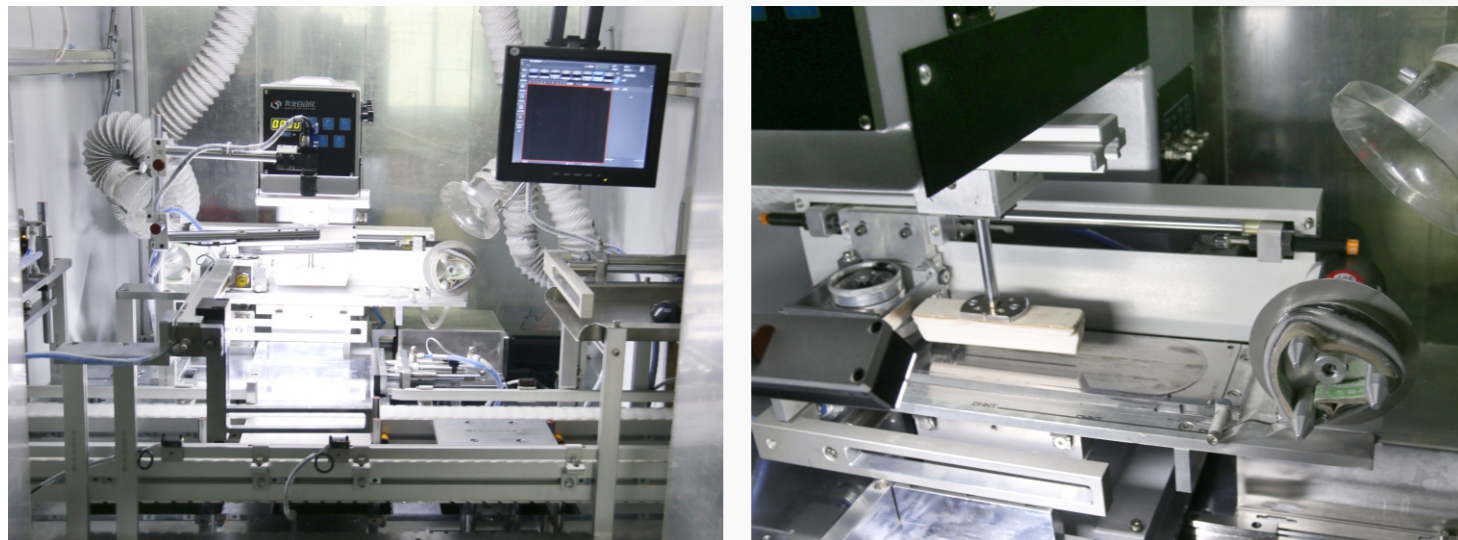
视觉应用专用设备 SPECIALIZED EQUIPMENT FOR VISION APPLICATIONS

MCCB塑壳断路器自动移印检测设备 MCCB molded case circuit breaker automatic pad printing inspection equipment

系统特点 SYSTEM FEATURES

采用多规格混合生产、自动化、信息化、模块化、柔性化、定制化、可视化、一键切换、远程维护设计、预警通知、评估报告、数据采集与处理、全局检测管理、设备全生命周期管理等。

Adopting multi-spec mixed production, automation, informatization, modularization, Flexibility, customization, Visualization, One-click switching, Remote maintenance design, Early warning notification, assessment reports, data collection and processing, Global detection management, Equipment lifecycle management, etc.



设备功能介绍 EQUIPMENT FUNCTION INTRODUCTION

具有自动移印、CCD视觉检测、不良品区分、缺料报警、不良品回流返工等工序的在线监测、实时监控、质量溯源、条码识别、关键元器件寿命监测、数据存储、MES系统与ERP系统联网、参数任意配方、智慧能源分析与节能管理系统、智能装备服务大数据云平台等功能。

It has the functions of online monitoring, real-time monitoring, quality traceability, barcode identification, key component life monitoring, data storage, MES system networking with ERP system, parameter arbitrary recipe, intelligent energy analysis and energy saving management system, intelligent equipment service big data cloud platform, etc. for automatic pad printing, CCD visual inspection, defective product differentiation, missing material alarm, defective product rework.

设备技术参数 EQUIPMENT TECHNICAL PARAMETERS

- 1、设备输入电压380V±10%，50Hz；±1Hz；
 - 2、设备兼容极数：1P、2P、3P、4P、1P+模块、2P+模块、3P+模块、4P+模块
 - 3、设备生产节拍：1秒/极、1.2秒/极、1.5秒/极、2秒/极、3秒/极；五种不同规格设备。
 - 4、同一壳架产品，不同极数可以一键切换或扫码切换均可；不同壳架产品需要人工更换模具或夹具。
 - 5、不良品检测方式为：CCD视觉检测。
 - 6、移印机为环保移印机，自带清洁系统和X、Y、Z调节机构。
 - 7、设备具有故障报警、压力监测等报警显示功能。
 - 8、中文版和英文版两种操作系统。
 - 9、所有核心配件均采用意大利、瑞典、德国、日本、美国、台湾等不同国家和地区的进口配件。
 - 10、设备可选配《智慧能源分析与节能管理系统》和《智能装备服务大数据云平台》等功能。
 - 11、具有独立的自主知识产权。
- 1 · Device input voltage 380V±10%, 50Hz; ±1Hz;
 2 · Equipment compatible poles: 1P, 2P, 3P, 4P, 1P+module, 2P+module, 3P+module, 4P+module
 3 · Equipment production beat: 1sec/pole, 1.2sec/pole, 1.5sec/pole, 2sec/pole, 3sec/pole; five different specifications of equipment.
 4 · The same shell frame product, different poles can be switched by one key or sweeping the code to switch; different shell frame products need to manually replace the mold or fixture.
 5 · Defective product detection method is: CCD visual detection.
 6 · The pad printing machine is environmental protection pad printing machine, with its own cleaning system and X, Y, Z adjustment mechanism.
 7 · The equipment has alarm display function such as fault alarm and pressure monitoring.
 8 · Two operating systems, Chinese and English.
 9 · All core parts are imported from different countries and regions such as Italy, Sweden, Germany, Japan, USA, Taiwan, etc.
 10 · The equipment can be equipped with optional functions such as "intelligent energy analysis and energy saving management system" and "intelligent equipment service big data cloud platform".
 11 · With independent independent intellectual property rights.



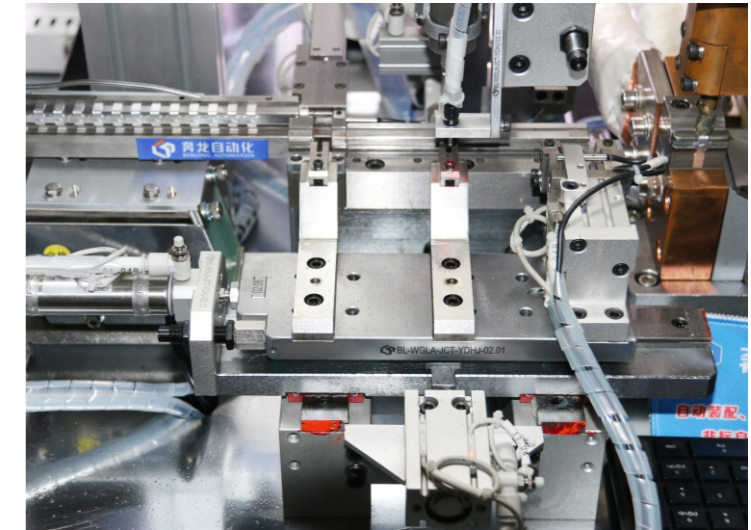
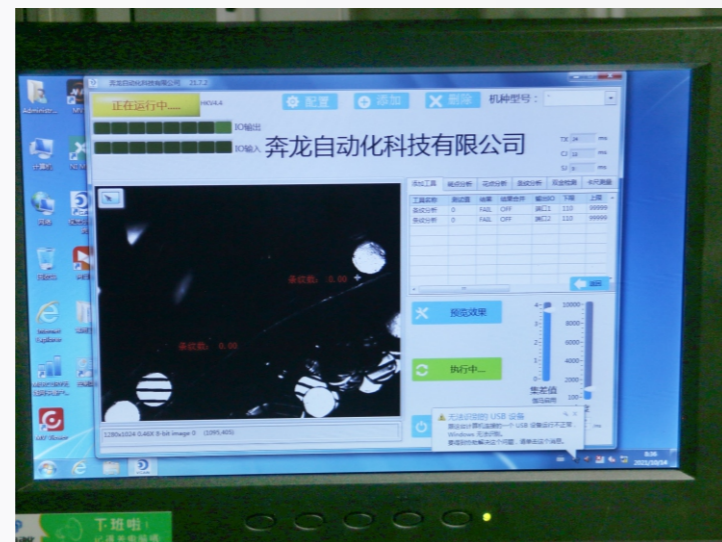
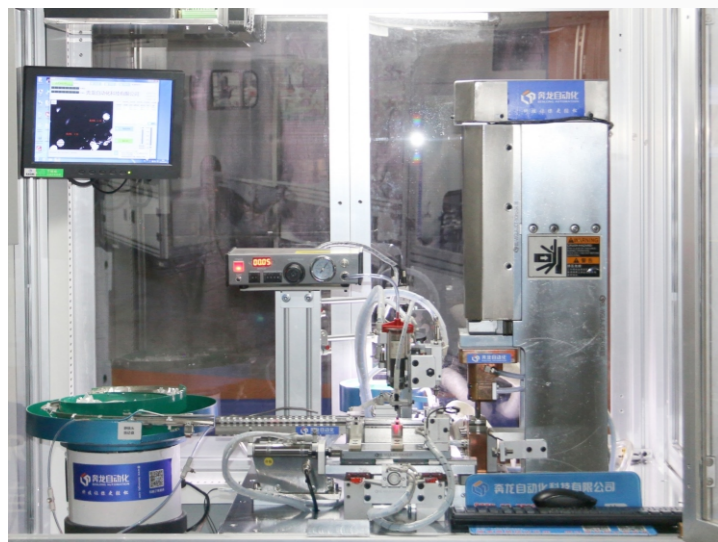
视觉应用专用设备 SPECIALIZED EQUIPMENT FOR VISION APPLICATIONS

银点正反面自动检测设备 Silver dot positive and negative automatic inspection equipment

系统特点 SYSTEM FEATURES

采用多规格混合生产、自动化、信息化、模块化、柔性化、定制化、可视化、一键切换、远程维护设计、预警通知、评估报告、数据采集与处理、全局检测管理、设备全生命周期管理等。

Adopting multi-spec mixed production, automation, informatization, modularization, Flexibility, customization, Visualization, One-click switching, Remote maintenance design, Early warning notification, assessment reports, data collection and processing, Global detection management, Equipment lifecycle management, etc.



设备功能介绍 EQUIPMENT FUNCTION INTRODUCTION

具有银点正反面自动检测、不良品区分、下料、缺料/满料报警等工序的在线监测、实时监控、质量溯源、条码识别、关键元器件寿命监测、数据存储、MES系统与ERP系统联网、参数任意配方、智慧能源分析与节能管理系统、智能装备服务大数据云平台等功能。

It has the functions of online monitoring, real-time monitoring, quality traceability, barcode identification, key component life monitoring, data storage, MES system networking with ERP system, parameter arbitrary recipe, intelligent energy analysis and energy saving management system, intelligent equipment service big data cloud platform, etc. for the processes of silver dot positive and negative automatic detection, defective product differentiation, downgrading, missing/full material alarm.

设备技术参数 EQUIPMENT TECHNICAL PARAMETERS

- 1、设备输入电压380V±10%，50Hz；±1Hz；
 - 2、设备兼容规格：2P、3P、4P、63系列、125系列、250系列、400系列、630系列、800系列。
 - 3、设备生产节拍：28秒/台、40秒/台两种可任意选配。
 - 4、同一壳架产品，不同极数可以一键切换或扫码切换均可；切换不同壳架产品需要人工更换模具或夹具。
 - 5、设备夹具可根据产品型号定做。
 - 6、瞬时脱扣时间判定值可以任意设定；检测电流精度±1%；波形失真度≤3%；输出电流可以任意设定。
 - 7、瞬时检测方式：单相检测和串联检测可以选择。
 - 8、设备具有故障报警、压力监测等报警显示功能。
 - 9、中文版和英文版两种操作系统。
 - 10、所有核心配件均采用意大利、瑞典、德国、日本、美国、台湾等不同国家和地区的进口配件。
 - 11、设备可选配《智慧能源分析与节能管理系统》和《智能装备服务大数据云平台》等功能。
 - 12、具有独立的自主知识产权。
- 1 · Device input voltage 380V±10%, 50Hz; ±1Hz;
 2 · Equipment compatible specifications: 2P, 3P, 4P, 63 series, 125 series, 250 series, 400 series, 630 series, 800 series.
 3 · Equipment production beat: 28 seconds/set, 40 seconds/set two kinds can be optional.
 4 · The same shell frame product, different poles can be switched by one key or sweeping code; switching different shell frame products requires manual replacement of molds or fixtures.
 5 · The equipment fixture can be customized according to the product model.
 6 · Instantaneous decoupling time judgment value can be set arbitrarily; detection current accuracy ±1%; waveform distortion ≤3%; output current can be set arbitrarily.
 7 · Instantaneous detection mode: single-phase detection and series detection can be selected.
 8 · The equipment has alarm display functions such as fault alarm and pressure monitoring.
 9 · Two kinds of operating systems, Chinese and English.
 10 · All core parts are imported from different countries and regions such as Italy, Sweden, Germany, Japan, the United States, Taiwan, etc.
 11 · The equipment can be equipped with optional functions such as "intelligent energy analysis and energy saving management system" and "intelligent equipment service big data cloud platform".
 12 · With independent independent intellectual property rights.



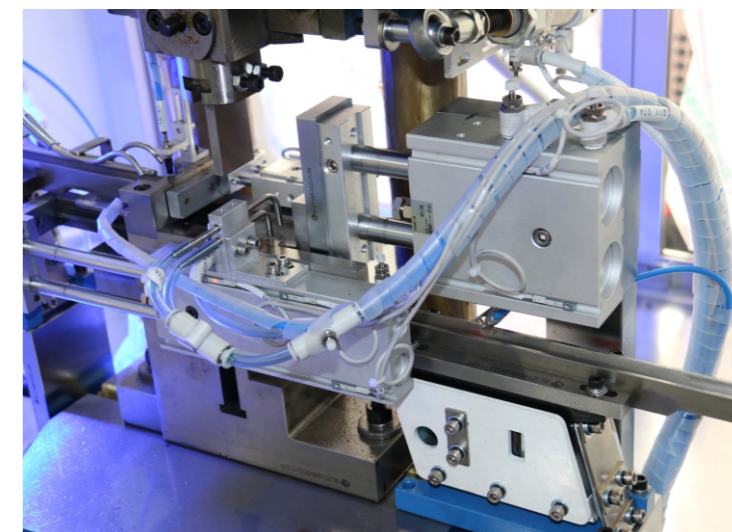
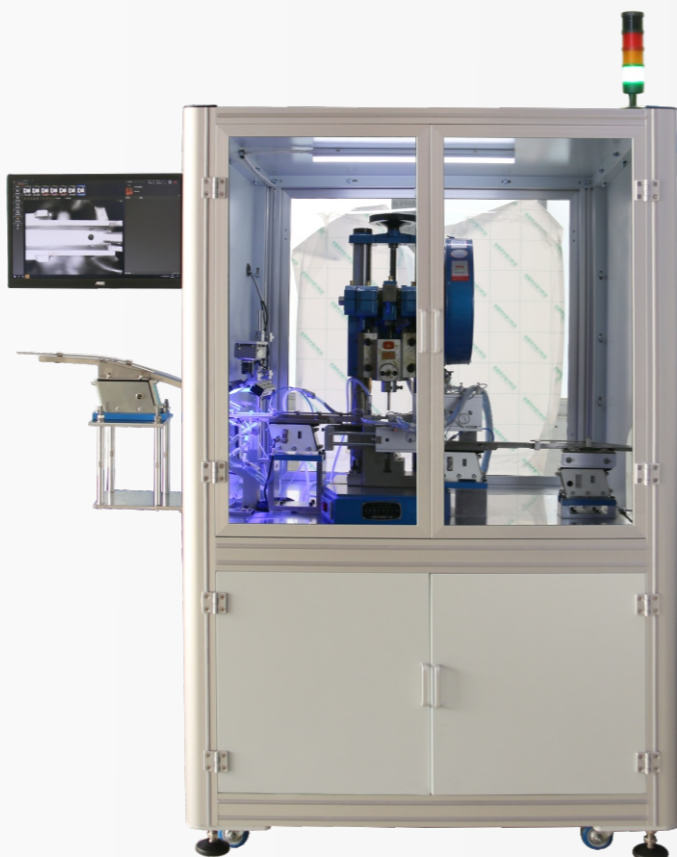
视觉应用专用设备 SPECIALIZED EQUIPMENT FOR VISION APPLICATIONS

线圈剥皮自动检测设备 Coil stripping automatic inspection equipment

系统特点 SYSTEM FEATURES

采用多规格混合生产、自动化、信息化、模块化、柔性化、定制化、可视化、一键切换、远程维护设计、预警通知、评估报告、数据采集与处理、全局检测管理、设备全生命周期管理等。

Adopting multi-spec mixed production, automation, informatization, modularization, Flexibility, customization, Visualization, One-click switching, Remote maintenance design, Early warning notification, assessment reports, data collection and processing, Global detection management, Equipment lifecycle management, etc.



设备功能介绍 EQUIPMENT FUNCTION INTRODUCTION

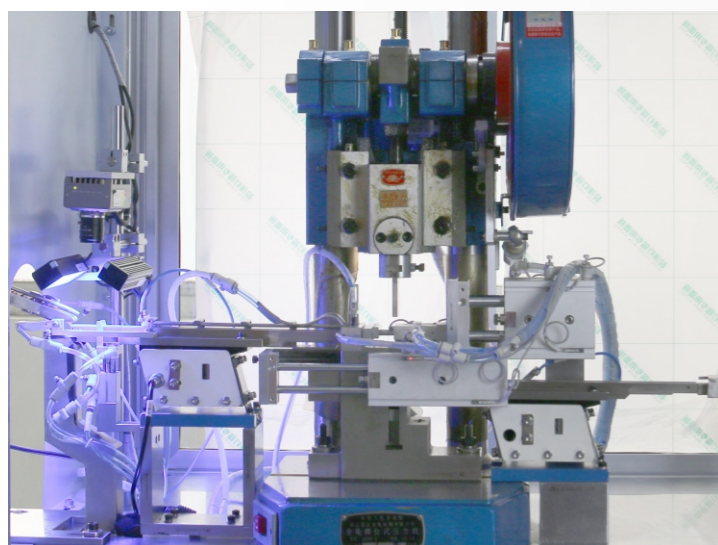
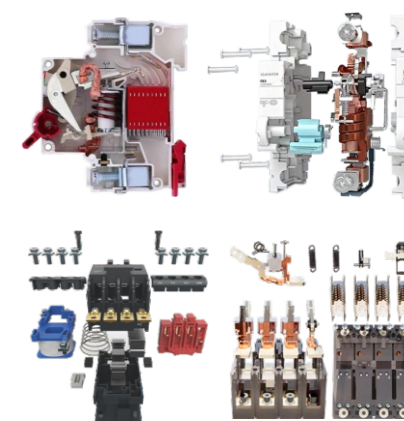
具有线圈剥皮自动检测、不良品区分、下料、缺料/满料报警等工序的在线监测、实时监控、质量溯源、条码识别、关键元器件寿命监测、数据存储、MES系统与ERP系统联网、参数任意配方、智慧能源分析与节能管理系统、智能装备服务大数据云平台等功能。

It has the functions of online monitoring, real-time monitoring, quality traceability, barcode identification, key component life monitoring, data storage, MES system networking with ERP system, parameter arbitrary recipe, intelligent energy analysis and energy saving management system, intelligent equipment service big data cloud platform, etc. for coil peeling automatic detection, defective product differentiation, downgrading, lack of material/full material alarm, etc.

设备技术参数 EQUIPMENT TECHNICAL PARAMETERS

- 1、设备输入电压380V±10%，50Hz；±1Hz；
- 2、设备兼容规格：2P、3P、4P、63系列、125系列、250系列、400系列、630系列、800系列。
- 3、设备生产节拍：28秒/台、40秒/台两种可任意选配。
- 4、同一壳架产品，不同极数可以一键切换或扫码切换均可；切换不同壳架产品需要人工更换模具或夹具。
- 5、设备夹具可根据产品型号定做。
- 6、检测电流精度±1%；波形失真度≤3%；输出电流可以任意设定。
- 7、自动检测方式：单相检测和串联检测可以选择。
- 8、设备具有故障报警、压力监测等报警显示功能。
- 9、中文版和英文版两种操作系统。
- 10、所有核心配件均采用意大利、瑞典、德国、日本、美国、台湾等不同国家和地区的进口配件。
- 11、设备可选配《智慧能源分析与节能管理系统》和《智能装备服务大数据云平台》等功能。
- 12、具有独立的自主知识产权。

- 1 · Device input voltage 380V±10%, 50Hz; ±1Hz;
- 2 · Equipment compatible specifications: 2P, 3P, 4P, 63 series, 125 series, 250 series, 400 series, 630 series, 800 series.
- 3 · Equipment production beat: 28 seconds/set, 40 seconds/set two kinds can be optional.
- 4 · The same shell frame product, different poles can be switched by one key or sweeping code; switching different shell frame products requires manual replacement of molds or fixtures.
- 5 · The equipment fixture can be customized according to the product model.
- 6 · Detection current accuracy ±1%; waveform distortion ≤3%; output current can be set arbitrarily.
- 7, automatic detection mode: single-phase detection and series detection can be selected.
- 8 · Equipment with fault alarm, pressure monitoring and other alarm display functions.
- 9 · Two kinds of operating systems, Chinese and English.
- 10 · All core parts are imported from different countries and regions such as Italy, Sweden, Germany, Japan, the United States, Taiwan, etc.
- 11 · The equipment can be equipped with optional functions such as "intelligent energy analysis and energy saving management system" and "intelligent equipment service big data cloud platform".
- 12 · With independent independent intellectual property rights.



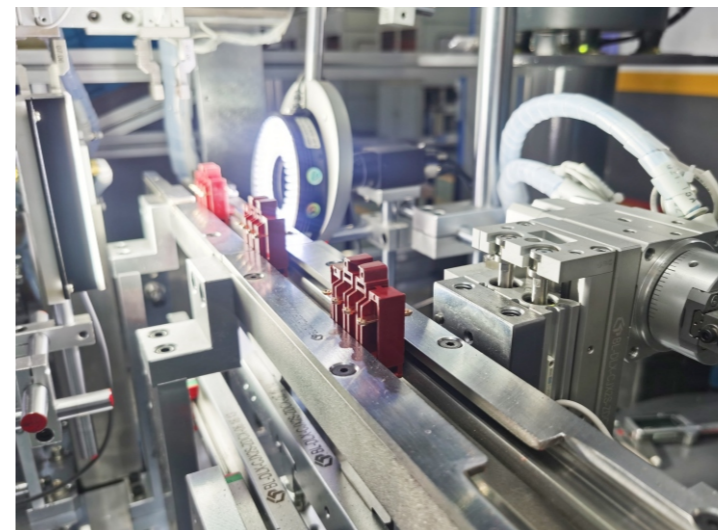
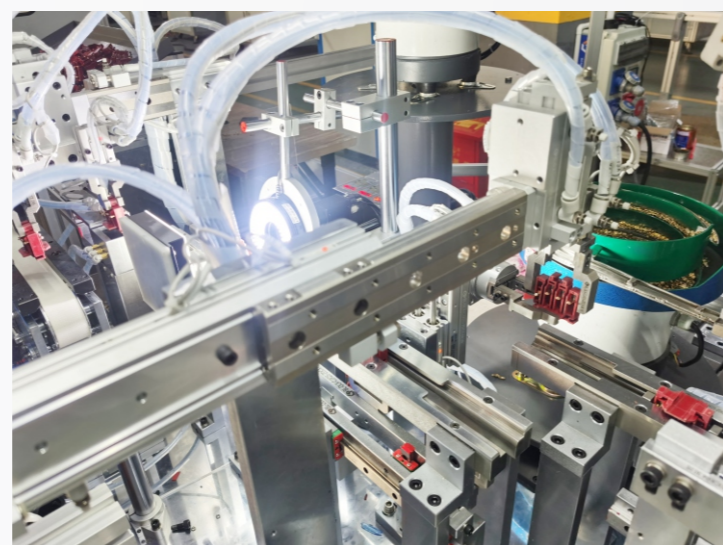
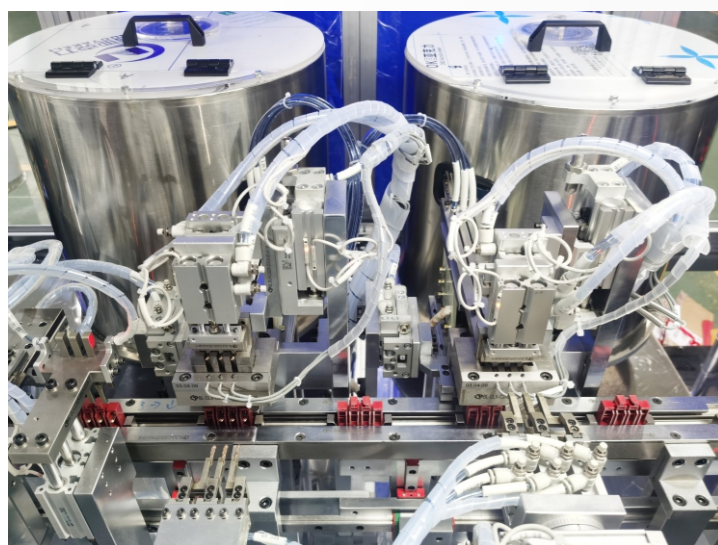
视觉应用专用设备 SPECIALIZED EQUIPMENT FOR VISION APPLICATIONS

自动插芯单元-视觉检测设备 Automatic core insertion unit-visual inspection equipment

系统特点 SYSTEM FEATURES

采用多规格混合生产、自动化、信息化、模块化、柔性化、定制化、可视化、一键切换、远程维护设计、预警通知、评估报告、数据采集与处理、全局检测管理、设备全生命周期管理等。

Adopting multi-spec mixed production, automation, informatization, modularization, Flexibility, customization, Visualization, One-click switching, Remote maintenance design, Early warning notification, assessment reports, data collection and processing, Global detection management, Equipment lifecycle management, etc.



设备功能介绍 EQUIPMENT FUNCTION INTRODUCTION

具有自动托盘供料、装配、检测、不良品区分、包装、码垛、AGV物流、缺料报警等工序的装配、在线检测、实时监控、质量溯源、条码识别、元器件寿命监测、数据存储、MES系统与ERP系统联网、参数任意配方、智慧能源分析与节能管理系统、智能装备服务大数据云平台等功能。

With automatic pallet feeding, assembly, testing, defective product differentiation, packaging, palletizing, AGV logistics, shortage alarm and other processes of assembly, online testing, real-time monitoring, quality traceability, barcode identification, component life monitoring, data storage, MES system and ERP system networking, parameters arbitrary recipe, intelligent energy analysis and energy saving management system, intelligent equipment services big data cloud platform and other functions.

设备技术参数 EQUIPMENT TECHNICAL PARAMETERS

- 1、设备输入电压380V±10%，50Hz；±1Hz；
- 2、设备兼容性及生产效率：可根据客户要求定做。
- 3、装配方式：根据产品的不同生产工艺及要求，可以实现产品的自动装配。
- 4、设备夹具可根据产品型号定做。
- 5、设备具有故障报警、压力监测等报警显示功能。
- 6、中文版和英文版两种操作系统。
- 7、所有核心配件均采用意大利、瑞典、德国、日本、美国、台湾等不同国家和地区的进口配件。
- 8、设备可选配《智慧能源分析与节能管理系统》和《智能装备服务大数据云平台》等功能。
- 9、具有独立的自主知识产权。

- 1 · Equipment input voltage 380V±10%, 50Hz; ±1Hz;
- 2 · Equipment compatibility and production efficiency: can be customized according to customer requirements.
- 3 · Assembly mode: according to the different production process and requirements of the product, it can realize the automatic assembly of the product.
- 4 · Equipment fixture can be customized according to the product model.
- 5 · Equipment with alarm display function such as fault alarm and pressure monitoring.
- 6 · Two kinds of operating systems, Chinese and English.
- 7 · All core parts are imported from different countries and regions such as Italy, Sweden, Germany, Japan, USA, Taiwan, etc.
- 8 · The equipment can be equipped with optional functions such as "intelligent energy analysis and energy saving management system" and "intelligent equipment service big data cloud platform".
- 9 · With independent independent intellectual property rights.



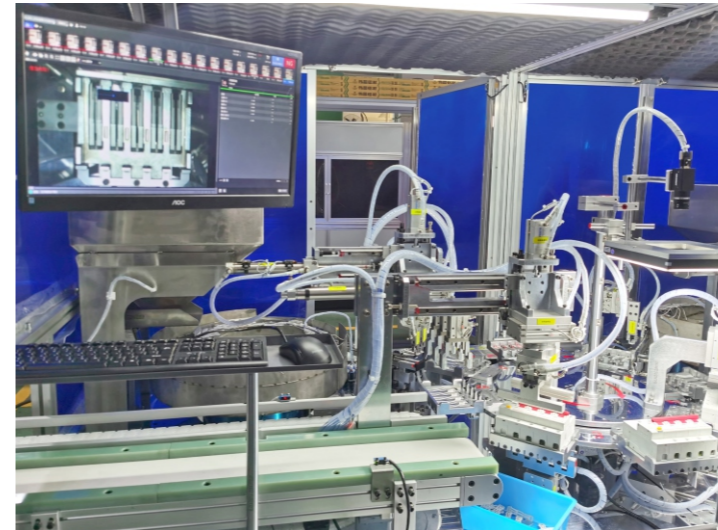
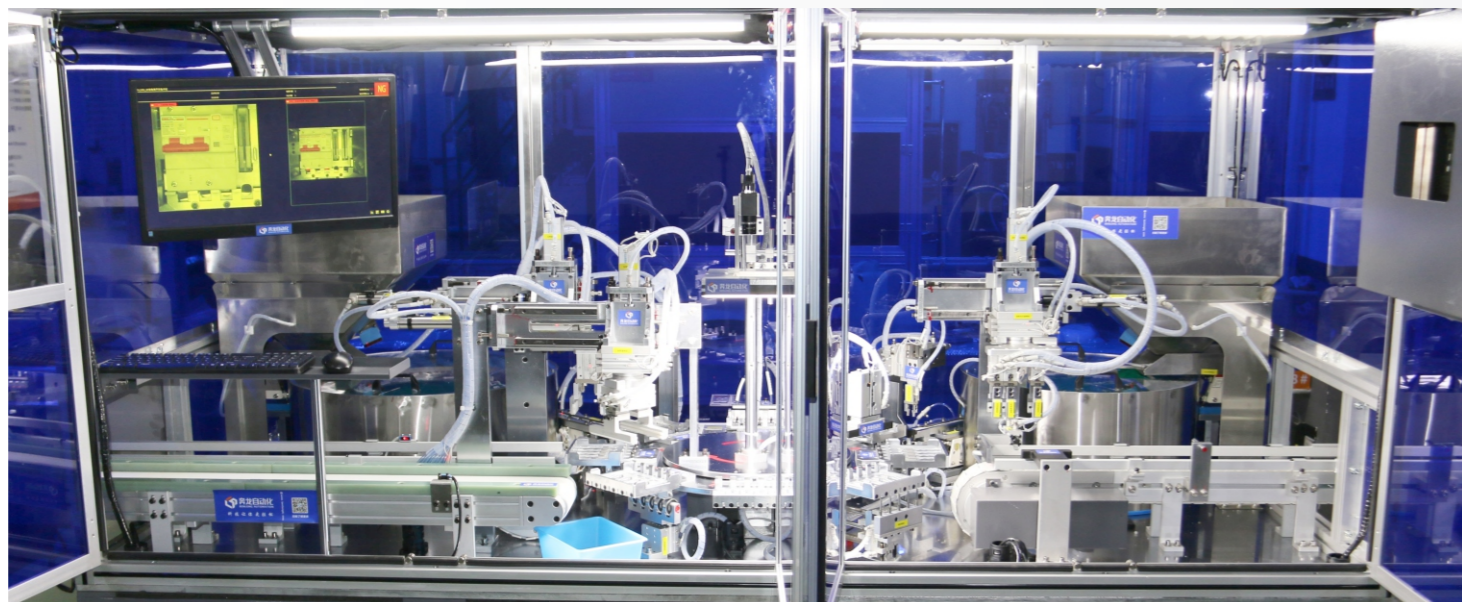
视觉应用专用设备 SPECIALIZED EQUIPMENT FOR VISION APPLICATIONS

自动装卡扣单元-视觉检测设备 Automatic snap unit-visual inspection equipment

系统特点 SYSTEM FEATURES

采用多规格混合生产、自动化、信息化、模块化、柔性化、定制化、可视化、一键切换、远程维护设计、预警通知、评估报告、数据采集与处理、全局检测管理、设备全生命周期管理等。

Adopting multi-spec mixed production, automation, informatization, modularization, Flexibility, customization, Visualization, One-click switching, Remote maintenance design, Early warning notification, assessment reports, data collection and processing, Global detection management, Equipment lifecycle management, etc.



设备功能介绍 EQUIPMENT FUNCTION INTRODUCTION

具有自动卡扣、CCD检测、不良品区分、缺料报警、翻转竖立等工序的在线监测、实时监控、质量溯源、条码识别、关键元器件寿命监测、数据存储、MES系统与ERP系统联网、参数任意配方、智慧能源分析与节能管理系统、智能装备服务大数据云平台等功能。

With automatic snap, CCD detection, defective product differentiation, lack of material alarm, flip erection and other processes of online monitoring, real-time monitoring, quality traceability, bar code identification, key components life monitoring, data storage, MES system and ERP system networking, parameter arbitrary formula, intelligent energy analysis and energy saving management system, intelligent equipment service data platform. MES system and ERP system networking, parameter arbitrary formula, intelligent energy analysis and energy saving management system, intelligent equipment service big data cloud platform and other functions.

设备技术参数 EQUIPMENT TECHNICAL PARAMETERS

- 1、设备输入电压380V±10%，50Hz；±1Hz；
 - 2、设备兼容性及生产节拍：可根据客户要求定做。
 - 3、视觉检测选配：根据产品的不同生产工艺及要求，可以采用高精度视觉、机器人+高精度视觉等方式实现。
 - 4、设备夹具可根据产品型号定做。
 - 5、设备具有故障报警、压力监测等报警显示功能。
 - 6、中文版和英文版两种操作系统。
 - 7、所有核心配件均采用意大利、瑞典、德国、日本、美国、台湾等不同国家和地区的进口配件。
 - 8、设备可选配《智慧能源分析与节能管理系统》和《智能装备服务大数据云平台》等功能。
 - 9、具有独立的自主知识产权。
- 1 · Equipment input voltage 380V±10%, 50Hz; ±1Hz;
 2 · Equipment compatibility and production beat: can be customized according to customer requirements.
 3 · Visual inspection optional: according to the different production process and requirements of the product, it can be realized by high precision vision, robot + high precision vision, etc.
 4 · Equipment fixture can be customized according to the product model.
 5 · The equipment has alarm display function such as fault alarm and pressure monitoring.
 6 · Two kinds of operating systems, Chinese and English.
 7 · All core parts are imported from different countries and regions such as Italy, Sweden, Germany, Japan, USA, Taiwan, etc.
 8 · The equipment can be equipped with optional functions such as "intelligent energy analysis and energy saving management system" and "intelligent equipment service big data cloud platform".
 9 · With independent independent intellectual property rights.



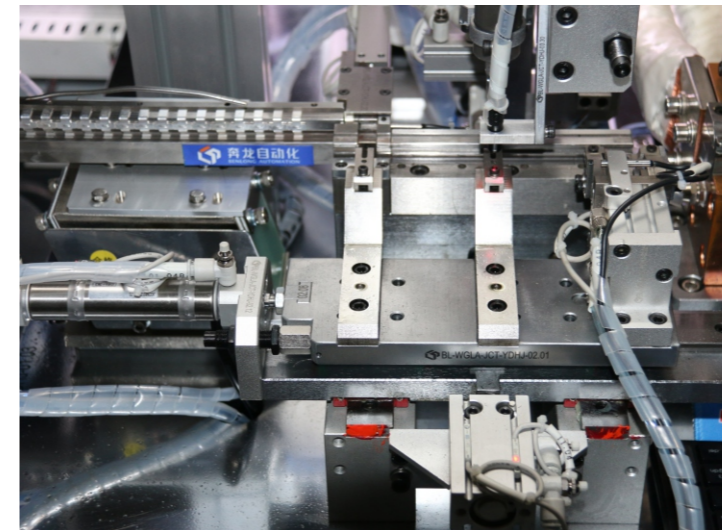
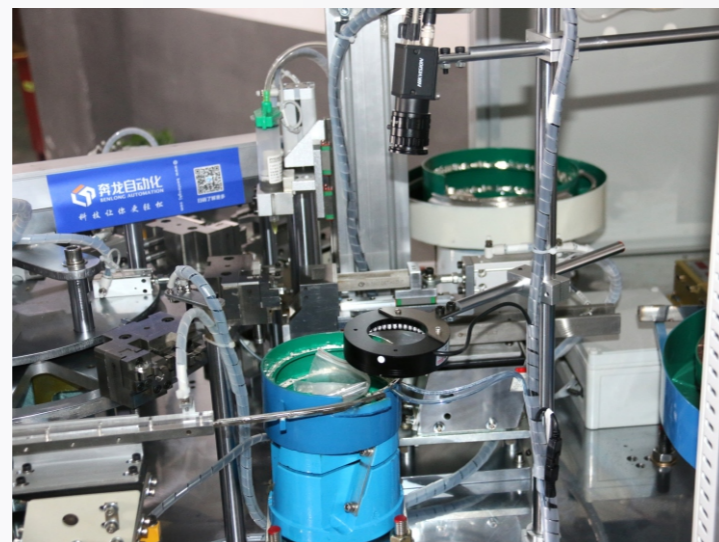
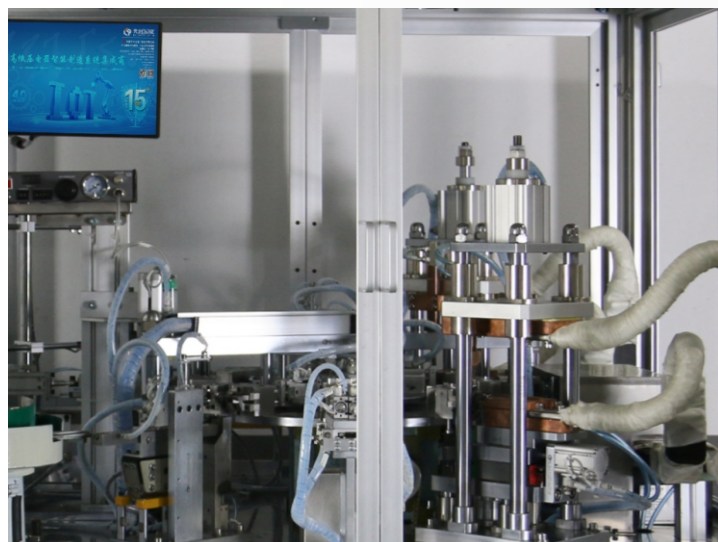
视觉应用专用设备 SPECIALIZED EQUIPMENT FOR VISION APPLICATIONS

银点、静触头自动焊接设备 Silver point and static contact automatic welding equipment

系统特点 SYSTEM FEATURES

采用多规格混合生产、自动化、信息化、模块化、柔性化、定制化、可视化、一键切换、远程维护设计、预警通知、评估报告、数据采集与处理、全局检测管理、设备全生命周期管理等。

Adopting multi-spec mixed production, automation, informatization, modularization, Flexibility, customization, Visualization, One-click switching, Remote maintenance design, Early warning notification, assessment reports, data collection and processing, Global detection management, Equipment lifecycle management, etc.



设备功能介绍 EQUIPMENT FUNCTION INTRODUCTION

具有静触头供料、加注助焊剂、银点供料、CCD检测、自动焊接、自动下料、不良品区分、缺料报警、焊接参数值任意设定、自动摆盘/计数、装袋、包装、机器人码垛、AGV物流等工序的在线监测、实时监控、质量溯源、关键元器件寿命监测、数据存储、MES系统与ERP系统联网、参数任意配方、智慧能源分析与节能管理系统、智能装备服务大数据云平台等功能。

It has the functions of online monitoring, real-time monitoring, quality traceability, key component life monitoring, data storage, MES system and ERP system networking, parameter arbitrary recipe, intelligent energy analysis and energy saving management system, intelligent equipment service big data cloud platform, etc. for static contact feeding, flux filling, silver point feeding, CCD detection, automatic welding, automatic feeding, defective product differentiation, missing material alarm, welding parameter value arbitrary setting, automatic plate/counting, bagging, packaging, robot palletizing, AGV logistics and other processes.

设备技术参数 EQUIPMENT TECHNICAL PARAMETERS

- 1、设备输入电压380V±10%，50Hz；±1Hz；
- 2、设备兼容银点尺寸：3mm*3mm*0.8mm与4mm*4mm*0.8mm两种规格。
- 3、设备生产节拍：≤3秒/个。
- 4、设备具有OEE数据自动统计分析功能。
- 5、不同规格产品切换生产时，需要人工更换模具或夹具。
- 6、焊接时间：1~99S参数可任意设定。
- 7、设备具有故障报警、压力监测等报警显示功能。
- 8、中文版和英文版两种操作系统。
- 9、所有核心配件均采用意大利、瑞典、德国、日本、美国、台湾等不同国家和地区的进口配件。
- 10、设备可选配《智慧能源分析与节能管理系统》和《智能装备服务大数据云平台》等功能。
- 11、具有独立的自主知识产权。

- 1 · Device input voltage 380V±10%, 50Hz; ±1Hz;
- 2 · Equipment compatible with silver dot size: 3mm*3mm*0.8mm and 4mm*4mm*0.8mm two specifications.
- 3 · Equipment production beat: ≤ 3 seconds/pc.
- 4 · Equipment with OEE data automatic statistical analysis function.
- 5 · When switching production between different specifications, manual replacement of molds or fixtures is required.
- 6 · Welding time: 1~99S parameters can be set arbitrarily.
- 7 · Equipment with alarm display function such as fault alarm and pressure monitoring.
- 8 · Two operating systems, Chinese and English.
- 9 · All core parts are imported from different countries and regions such as Italy, Sweden, Germany, Japan, USA, Taiwan, etc.
- 10 · The equipment can be equipped with optional functions such as "intelligent energy analysis and energy saving management system" and "intelligent equipment service big data cloud platform".
- 11 · With independent independent intellectual property rights.

