

企业简介 >>>

BENLONG AUTOMATION COMPANY PROFILE

奔龙自动化科技有限公司成立于2008年，以自动化、智能化、机器人、传感器、物联网、MES系统技术为核心，为客户提供智能装备制造及系统集成解决方案的国家级高新技术企业。主营产品有：高低压电器元器件自动化生产线、新能源元器件自动化生产线、充电桩自动化生产线、锂电池自动化拼装生产线、自动化焊接设备等，公司产品远销全国各地，同时出口到东南亚、中东、北非等30多个国家和地区。



Benlong Automation Technology Co., Ltd. was established in 2008, with automation, intelligence, robotics, sensors, Internet of Things, and MES system technology as its core, providing customers with intelligent equipment manufacturing and system integration solutions as a national high-tech enterprise. Our main products include: automated production lines for high and low voltage electrical components, automated production lines for new energy components, automated production lines for charging piles, automated assembly production lines for lithium batteries, automated welding equipment, etc. Our products are exported to various parts of the country and are also exported to more than 30 countries and regions such as Southeast Asia, the Middle East, and North Africa.



2008 年 奔龙自动化创业 Benlong Entrepreneurship	80+ 名 技术专员 technical attache	3+ 家 战略合作单位 Strategic Partners	2+ 所 科研院所及大专院校 Research Institutions	30+ 个 业务遍及国家和地区 Business covers countries and regions
20+ 家 外贸合作企业 foreign enterprise	28+ 家 上市公司合作 Listed company cooperation	1200+ 家 国内公司合作 Cooperative companies	265+ 个 知识产权 intellectual property	2+ 个 企业资质 Qualifications

奔龙自动化科技有限公司
Benlong Automation Technology Co., Ltd

SINCE 2008

+86-577-62777062 4008-600-680
E-mail: zzl@benlongkj.cn http://www.benlongkj.com



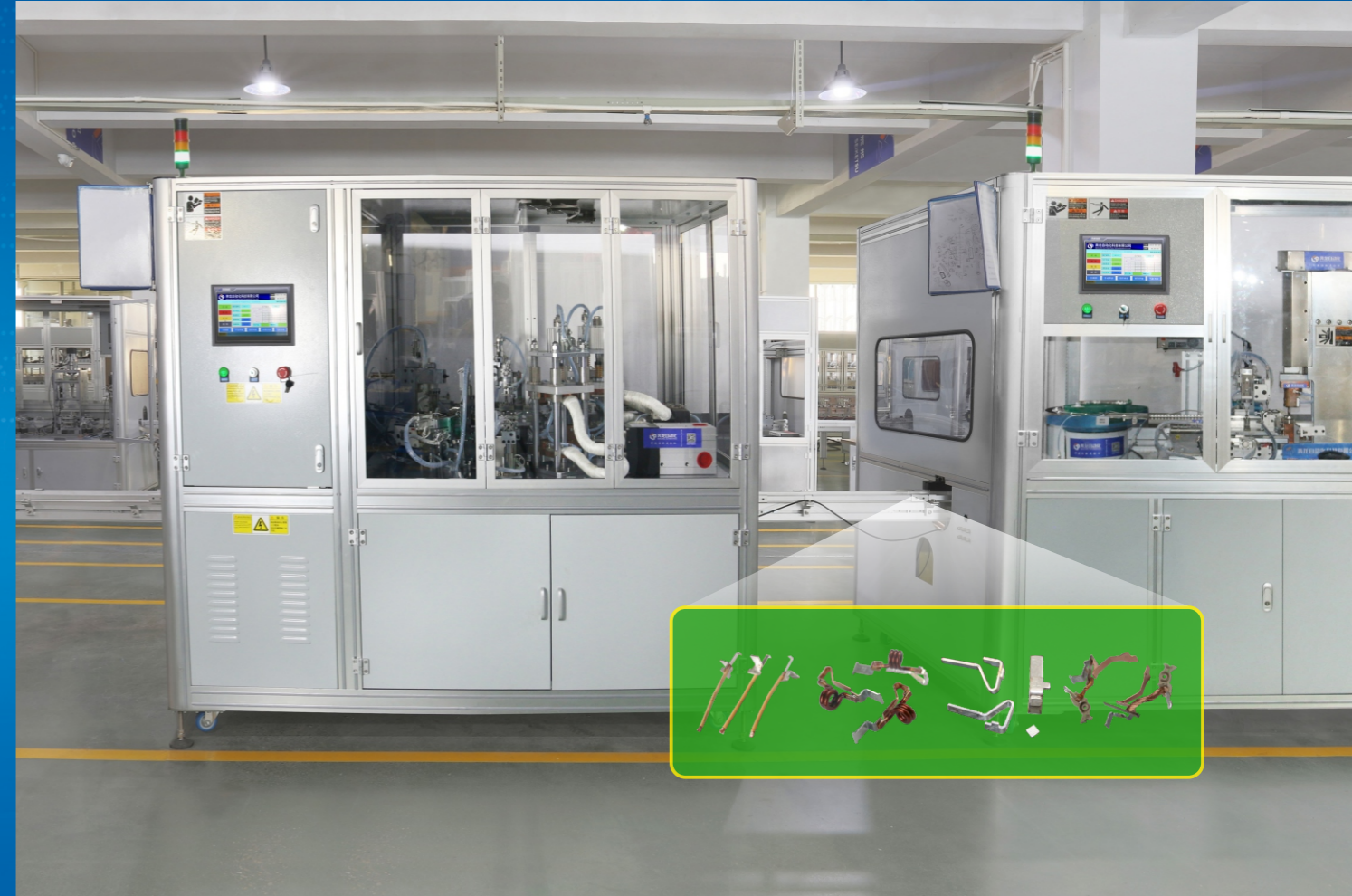
中文 抖音 English Tik tok WhatsApp



高端智能装备整体解决方案

HIGH-END INTELLIGENT EQUIPMENT OVERALL SOLUTIONS
浙江省科学技术进步奖 | 科技人员突出贡献奖 | 专利示范企业

National High tech Enterprise, Zhejiang Provincial Science and Technology Progress Award, Outstanding Contribution Award for Scientific and Technological Personnel, Patent Demonstration Enterprise



焊接类专用设备

WELDING SPECIAL EQUIPMENT

CONTENTS

目录

焊接类专用设备

WELDING SPECIAL EQUIPMENT

MCB微型断路器银点、静触头自动焊接设备 MCB miniature circuit breaker silver point and static contact automatic welding equipment	001/002
MCB微型断路器磁组件或线圈组件自动焊接设备 MCB miniature circuit breaker magnetic assembly or coil assembly automatic welding equipment	003/004
MCB微型断路器导线、温度感应片、接线板自动焊接设备 MCB miniature circuit breaker wire, temperature sensing piece, terminal block automatic welding equipment	005/006
MCB微型断路器磁组件或线圈组件自动成型、检测、冲压、焊接一体化设备 MCB miniature circuit breaker magnetic assembly or coil assembly automatic forming, testing, stamping, welding integrated equipment	007/008
MCB微型断路器磁轭、银点、引弧角自动焊接设备 MCB miniature circuit breaker magnetic yoke, silver point, lead arc angle automatic welding equipment	009/010
MCB微型断路器双金、动触头、编织线自动焊接设备 MCB miniature circuit breaker double gold, dynamic contact, braided wire automatic welding equipment	011/012
墙壁开关银点自动焊接设备 Wall switch silver point automatic welding equipment	013/014

焊接类专用设备

WELDING SPECIAL EQUIPMENT

MCB微型断路器银点、静触头自动焊接设备
MCB miniature circuit breaker double gold, dynamic contact, braided wire automatic welding equipment



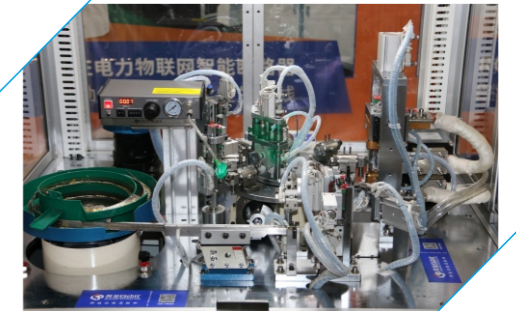
MCB微型断路器磁组件或线圈组件自动焊接设备
MCB miniature circuit breaker silver point and static contact automatic welding equipment



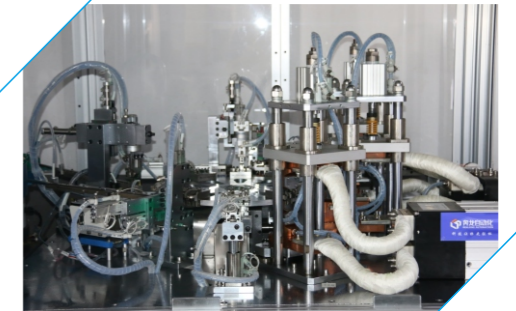
MCB微型断路器导线、温度感应片、接线板自动焊接设备
MCB miniature circuit breaker magnetic assembly or coil assembly automatic welding equipment



墙壁开关银点自动焊接设备
Wall switch silver point automatic welding equipment



MCB微型断路器双金、动触头、编织线自动焊接设备
MCB miniature circuit breaker magnetic yoke, silver point, lead arc angle automatic welding equipment



MCB微型断路器磁轭、银点、引弧角自动焊接设备
MCB miniature circuit breaker magnetic assembly or coil assembly automatic forming, testing, stamping, welding integrated equipment



MCB微型断路器磁组件或线圈组件自动成型、检测、冲压、焊接一体化设备
MCB miniature circuit breaker wire, temperature sensing piece, terminal block automatic welding equipment



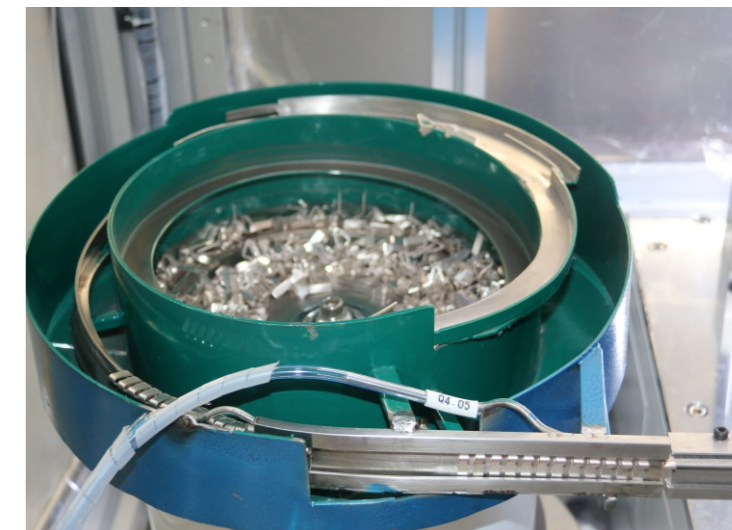
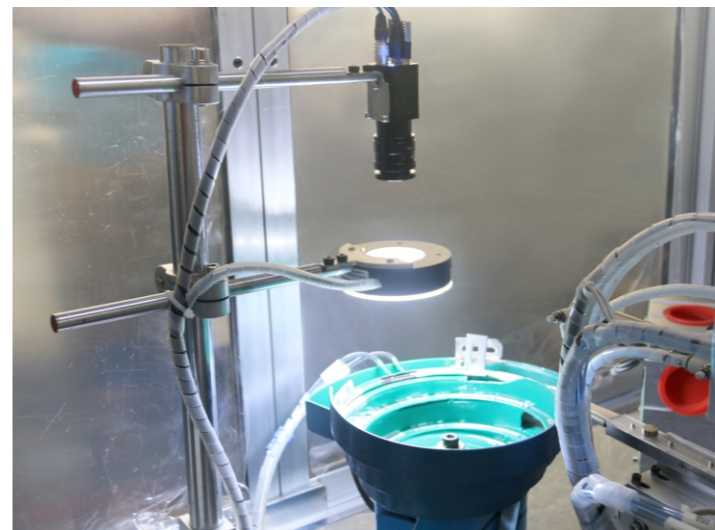
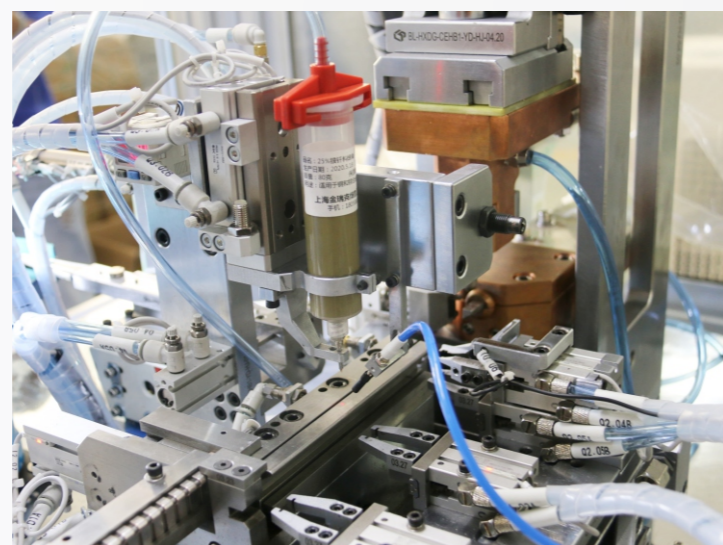
焊接类专用设备 WELDING SPECIAL EQUIPMENT

MCB微型断路器银点、静触头自动焊接设备 MCB miniature circuit breaker silver point and static contact automatic welding equipment

系统特点 SYSTEM FEATURES

采用多规格混合生产、自动化、信息化、模块化、柔性化、定制化、可视化、一键切换、远程维护设计、预警通知、评估报告、数据采集与处理、全局检测管理、设备全生命周期管理等。

Adopting multi-spec mixed production, automation, informatization, modularization, Flexibility, customization, Visualization, One-click switching, Remote maintenance design, Early warning notification, assessment reports, data collection and processing, Global detection management, Equipment lifecycle management, etc.



设备功能介绍 EQUIPMENT FUNCTION INTRODUCTION

具有静触头供料、加注助焊剂、银点供料、CCD检测、自动焊接、自动下料、不良品区分、缺料报警、焊接参数值任意设定、自动摆盘/计数、装袋、包装、机器人码垛、AGV物流等工序的在线监测、实时监控、质量溯源、关键元器件寿命监测、数据存储、MES系统与ERP系统联网、参数任意配方、智慧能源分析与节能管理系统、智能装备服务大数据云平台等功能。

It has the functions of online monitoring, real-time monitoring, quality traceability, key component life monitoring, data storage, MES system and ERP system networking, parameter arbitrary recipe, intelligent energy analysis and energy saving management system, intelligent equipment service big data cloud platform, etc. for static contact feeding, flux filling, silver point feeding, CCD detection, automatic welding, automatic feeding, defective product differentiation, missing material alarm, welding parameter value arbitrary setting, automatic plate/counting, bagging, packaging, robot palletizing, AGV logistics and other processes.

设备技术参数 EQUIPMENT TECHNICAL PARAMETERS

- 1、设备输入电压380V±10%，50Hz；±1Hz；
- 2、设备兼容银点尺寸：3mm*3mm*0.8mm与4mm*4mm*0.8mm两种规格。
- 3、设备生产节拍：≤3秒/个。
- 4、设备具有OEE数据自动统计分析功能。
- 5、不同规格产品切换生产时，需要人工更换模具或夹具。
- 6、焊接时间：1~99S参数可任意设定。
- 7、设备具有故障报警、压力监测等报警显示功能。
- 8、中文版和英文版两种操作系统。
- 9、所有核心配件均采用意大利、瑞典、德国、日本、美国、台湾等不同国家和地区的进口配件。
- 10、设备可选配《智慧能源分析与节能管理系统》和《智能装备服务大数据云平台》等功能。
- 11、具有独立的自主知识产权。

- 1 · Device input voltage 380V±10%, 50Hz; ±1Hz;
- 2 · Equipment compatible with silver dot size: 3mm*3mm*0.8mm and 4mm*4mm*0.8mm two specifications.
- 3 · Equipment production beat: ≤ 3 seconds/pc.
- 4 · Equipment with OEE data automatic statistical analysis function.
- 5 · When switching production between different specifications, manual replacement of molds or fixtures is required.
- 6 · Welding time: 1~99S parameters can be set arbitrarily.
- 7 · Equipment with alarm display function such as fault alarm and pressure monitoring.
- 8 · Two operating systems, Chinese and English.
- 9 · All core parts are imported from different countries and regions such as Italy, Sweden, Germany, Japan, USA, Taiwan, etc.
- 10 · The equipment can be equipped with optional functions such as "intelligent energy analysis and energy saving management system" and "intelligent equipment service big data cloud platform".
- 11 · With independent independent intellectual property rights.



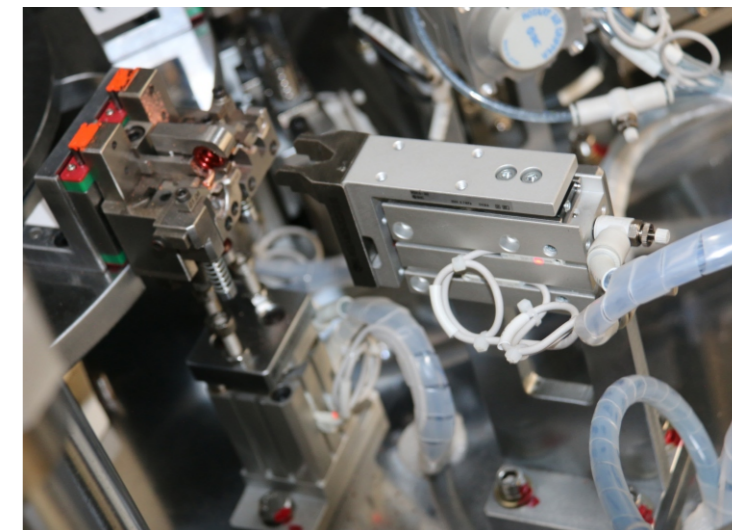
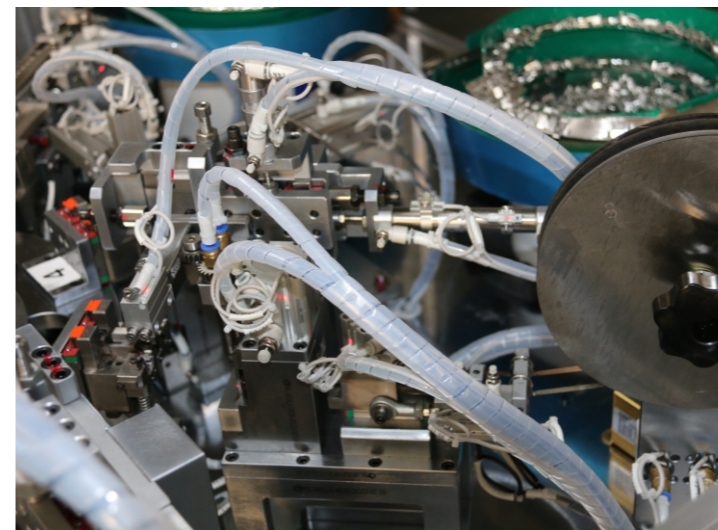
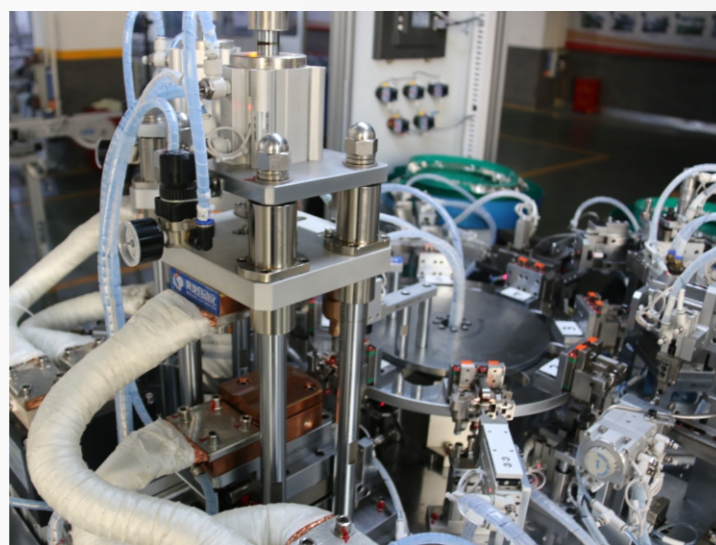
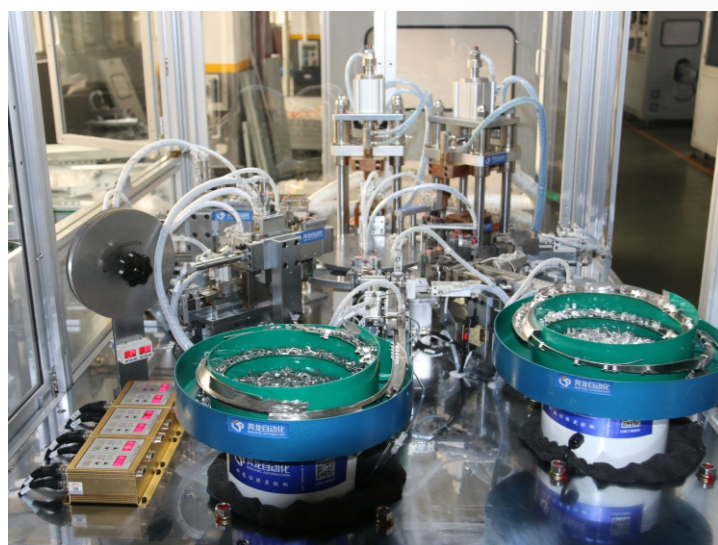
焊接类专用设备 WELDING SPECIAL EQUIPMENT

MCB微型断路器磁组件或线圈组件自动焊接设备 MCB miniature circuit breaker magnetic assembly or coil assembly automatic welding equipment

系统特点 SYSTEM FEATURES

采用多规格混合生产、自动化、信息化、模块化、柔性化、定制化、可视化、一键切换、远程维护设计、预警通知、评估报告、数据采集与处理、全局检测管理、设备全生命周期管理等。

Adopting multi-spec mixed production, automation, informatization, modularization, Flexibility, customization, Visualization, One-click switching, Remote maintenance design, Early warning notification, assessment reports, data collection and processing, Global detection management, Equipment lifecycle management, etc.



设备功能介绍 EQUIPMENT FUNCTION INTRODUCTION

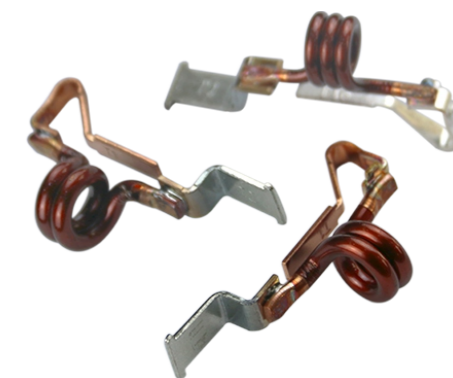
具有静触头组件供料、接线板供料、加注助焊剂或非晶片、线圈供料、CCD检测、自动焊接、自动下料、不良品区分、缺料报警、焊接参数值任意设定、自动摆盘/计数、装袋、包装、机器人码垛、AGV物流等工序的在线监测、实时监控、质量溯源、关键元器件寿命监测、数据存储、MES系统与ERP系统联网、参数任意配方、智慧能源分析与节能管理系统、智能装备服务大数据云平台等功能。

It has the functions of online monitoring, real-time monitoring, quality traceability, key component life monitoring, data storage, networking of MES system and ERP system, arbitrary recipe of parameters, intelligent energy analysis and energy saving management system, intelligent equipment service big data cloud platform, etc. for static contact assembly feeding, terminal board feeding, flux filling or non-wafer, coil feeding, CCD detection, automatic welding, automatic feeding, defective product differentiation, shortage alarm, welding parameter value arbitrary setting, automatic plate/counting, bagging, packaging, robot palletizing, AGV logistics and other processes.

设备技术参数 EQUIPMENT TECHNICAL PARAMETERS

- 1、设备输入电压 $380V \pm 10\%$ ，50Hz； $\pm 1Hz$ ；
- 2、设备兼容线圈规格：20A、25A、32A、40A、50A、63A、80A。
- 3、设备生产节拍： ≤ 3 秒/个。
- 4、设备具有OEE数据自动统计分析功能。
- 5、不同规格产品切换生产时，需要人工更换模具或夹具。
- 6、焊接时间：1~99S参数可任意设定。
- 7、设备具有故障报警、压力监测等报警显示功能。
- 8、中文版和英文版两种操作系统。
- 9、所有核心配件均采用意大利、瑞典、德国、日本、美国、台湾等不同国家和地区的进口配件。
- 10、设备可选配《智慧能源分析与节能管理系统》和《智能装备服务大数据云平台》等功能。
- 11、具有独立的自主知识产权

- 1 · Device input voltage $380V \pm 10\%$, 50Hz; $\pm 1Hz$;
- 2 · Equipment compatible coil specifications: 20A, 25A, 32A, 40A, 50A, 63A, 80A.
- 3 · Equipment production beat: ≤ 3 seconds/pc.
- 4 · Equipment with OEE data automatic statistical analysis function.
- 5 · When switching production of different specification products, manual change of mold or fixture is required.
- 6 · Welding time: 1~99S parameters can be set arbitrarily.
- 7 · Equipment with alarm display function such as fault alarm and pressure monitoring.
- 8 · Two operating systems, Chinese and English.
- 9 · All core parts are imported from different countries and regions such as Italy, Sweden, Germany, Japan, USA, Taiwan, etc.
- 10 · The equipment can be equipped with optional functions such as "intelligent energy analysis and energy saving management system" and "intelligent equipment service big data cloud platform".
- 11 · With independent independent intellectual property rights



焊接类专用设备 WELDING SPECIAL EQUIPMENT

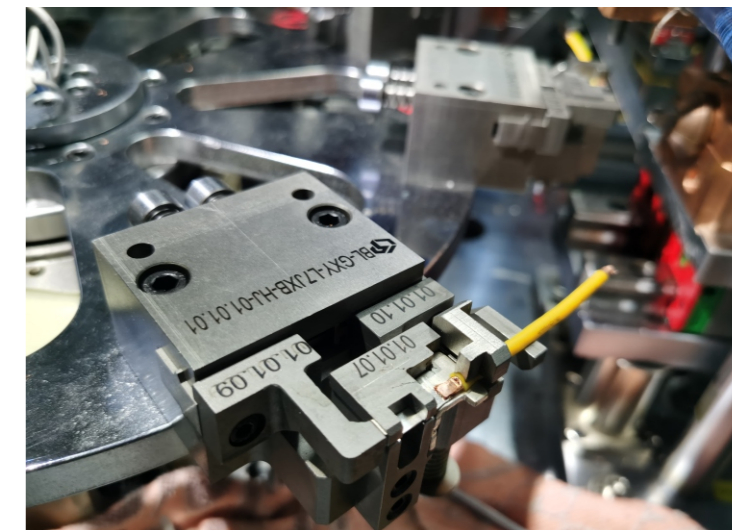
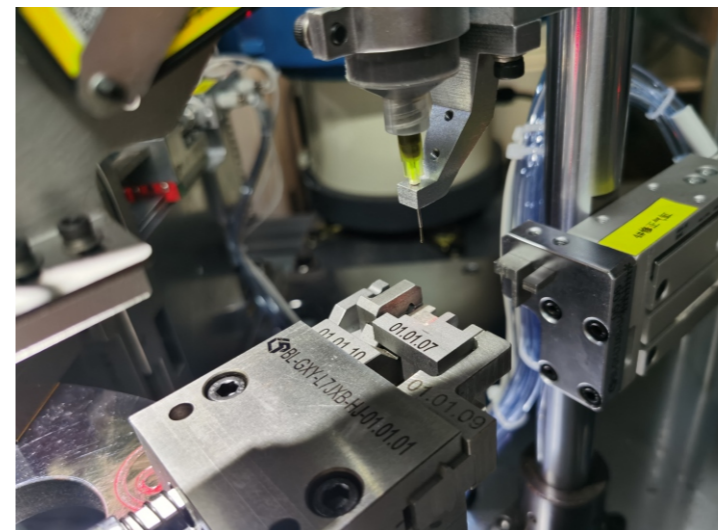
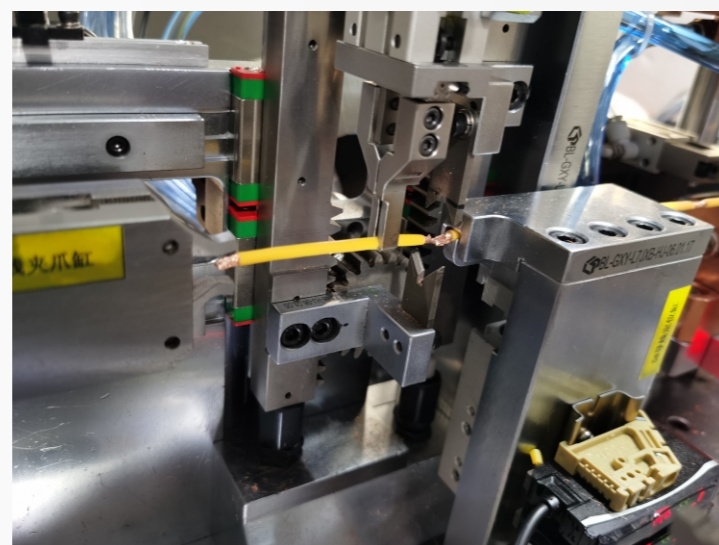
MCB微型断路器导线、温度感应片、接线板自动焊接设备

MCB miniature circuit breaker wire, temperature sensing piece, terminal block automatic welding equipment

系统特点 SYSTEM FEATURES

采用多规格混合生产、自动化、信息化、模块化、柔性化、定制化、可视化、一键切换、远程维护设计、预警通知、评估报告、数据采集与处理、全局检测管理、设备全生命周期管理等。

Adopting multi-spec mixed production, automation, informatization, modularization, Flexibility, customization, Visualization, One-click switching, Remote maintenance design, Early warning notification, assessment reports, data collection and processing, Global detection management, Equipment lifecycle management, etc.



设备功能介绍 EQUIPMENT FUNCTION INTRODUCTION

具有导线、温度感应片、接线板自动焊接、加注焊接辅助材料、检测、焊接、不良品区分、包装、码垛、AGV物流、缺料报警等工序的装配、在线检测、焊接、实时监控、质量溯源、条码识别、元器件寿命监测、数据存储、MES系统与ERP系统联网、参数任意配方、智慧能源分析与节能管理系统、智能装备服务大数据云平台等功能。

It has the functions of wire, temperature sensing piece, terminal block automatic welding, filling welding auxiliary material, testing, welding, defective product differentiation, packaging, palletizing, AGV logistics, shortage alarm and other processes of assembly, online testing, welding, real-time monitoring, quality traceability, barcode identification, component life monitoring, data storage, MES system and ERP system networking, parameter arbitrary formula, intelligent energy analysis and energy saving management system, intelligent equipment service big data cloud platform, etc.

设备技术参数 EQUIPMENT TECHNICAL PARAMETERS

- 1、设备输入电压380V±10%，50Hz；±1Hz；
- 2、设备兼容性生产节拍：可根据客户要求定做。
- 3、焊接方式：根据产品的不同生产工艺及要求，可以采用电阻焊接、中频焊接、高频感应焊接、激光焊接、气体保护焊接、锡焊、摩擦焊接、超声波焊接等方式实现。
- 4、焊接工艺：人工装配自动焊接或自动装配自动焊接两种模式可任意选配。
- 5、设备夹具可根据产品型号定做。
- 6、设备具有故障报警、压力监测等报警显示功能。
- 7、中文版和英文版两种操作系统。
- 8、所有核心配件均采用意大利、瑞典、德国、日本、美国、台湾等不同国家和地区的进口配件。
- 9、设备可选配《智慧能源分析与节能管理系统》和《智能装备服务大数据云平台》等功能。
- 10、具有独立的自主知识产权。

- 1 · Equipment input voltage 380V±10%, 50Hz; ±1Hz;
- 2 · Equipment compatibility and production beat: can be customized according to customer requirements.
- 3 · Welding mode: according to the different production process and requirements of the product, resistance welding, medium frequency welding, high frequency induction welding, laser welding, gas protection welding, tin welding, friction welding, ultrasonic welding, etc. can be used to achieve.
- 4 · Welding process: manual assembly automatic welding or automatic assembly automatic welding two modes can be optional.
- 5 · Equipment fixture can be customized according to the product model.
- 6 · Equipment with fault alarm, pressure monitoring and other alarm display functions.
- 7 · Two kinds of operating systems, Chinese and English.
- 8 · All core parts are imported from different countries and regions such as Italy, Sweden, Germany, Japan, USA, Taiwan, etc.
- 9 · The equipment can be equipped with optional functions such as "intelligent energy analysis and energy saving management system" and "intelligent equipment service big data cloud platform".
- 10 · With independent independent intellectual property rights.



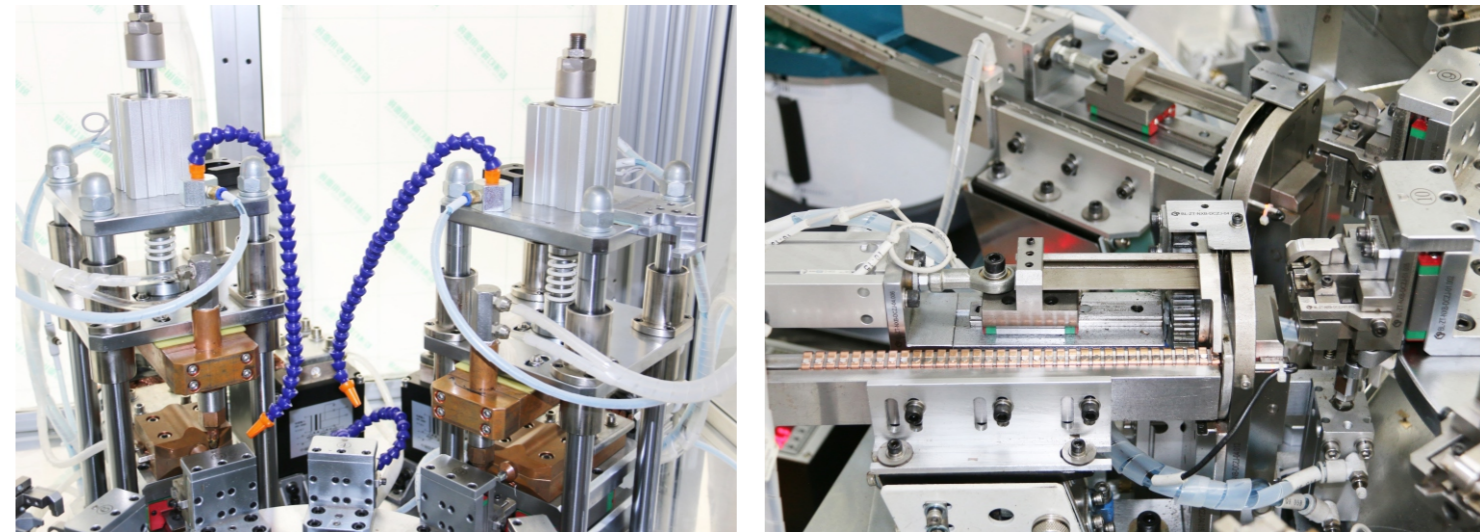
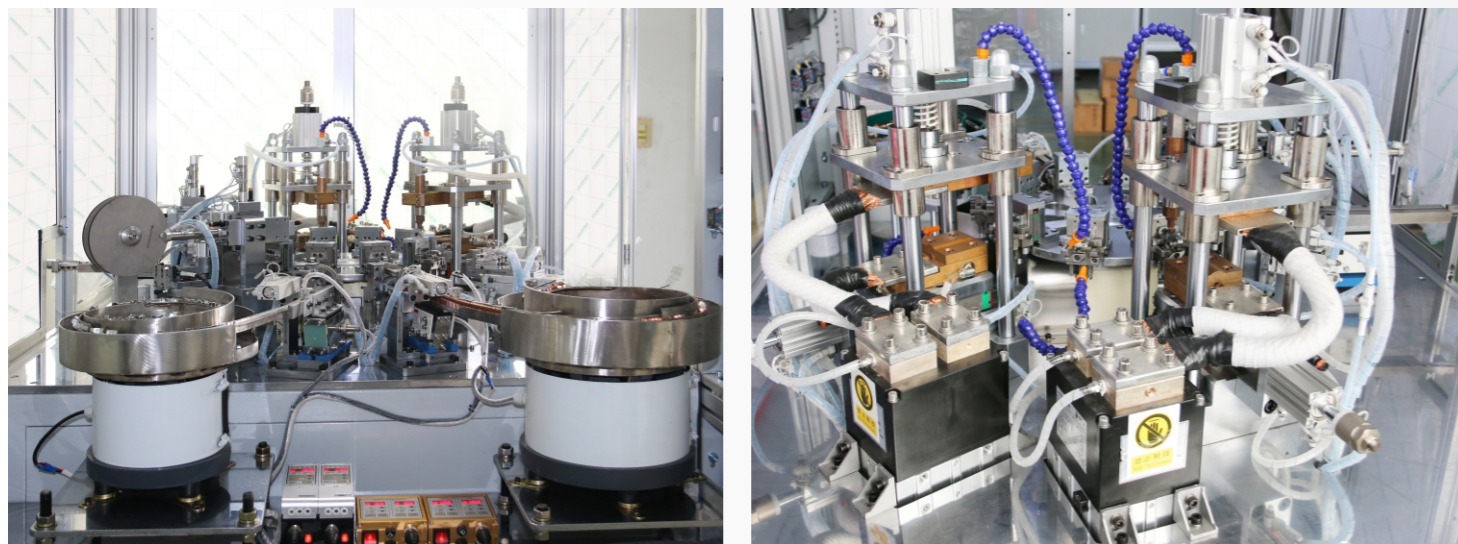
焊接类专用设备 WELDING SPECIAL EQUIPMENT

MCB微型断路器磁组件或线圈组件自动成型、检测、冲压、焊接一体化设备 MCB miniature circuit breaker magnetic assembly or coil assembly automatic forming, testing, stamping and welding integrated equipment

系统特点 SYSTEM FEATURES

采用多规格混合生产、自动化、信息化、模块化、柔性化、定制化、可视化、一键切换、远程维护设计、预警通知、评估报告、数据采集与处理、全局检测管理、设备全生命周期管理等。

Adopting multi-spec mixed production, automation, informatization, modularization, Flexibility, customization, Visualization, One-click switching, Remote maintenance design, Early warning notification, assessment reports, data collection and processing, Global detection management, Equipment lifecycle management, etc.



设备功能介绍 EQUIPMENT FUNCTION INTRODUCTION

具有线圈自动成型、剥皮、CCD检测、冲压、银点供料、静触头供料、接线板供料、加注助焊剂或非晶片、线圈供料、自动焊接、自动下料、不良品区分、缺料报警、焊接参数值任意设定、自动摆盘/计数、装袋、包装、机器人码垛、AGV物流等工序的在线监测、实时监控、质量溯源、关键元器件寿命监测、数据存储、MES系统与ERP系统联网、参数任意配方、智慧能源分析与节能管理系统、智能装备服务大数据云平台等功能。

It has functions of automatic coil forming, peeling, CCD inspection, stamping, silver point feeding, static contact feeding, terminal board feeding, flux or non-wafer filling, coil feeding, automatic welding, automatic feeding, defective product differentiation, shortage alarm, arbitrary setting of welding parameter values, automatic tray/counting, bagging, packaging, robot palletizing, AGV logistics and other processes such as online monitoring, real-time monitoring, quality traceability, key component life monitoring, data storage, MES system networking with ERP system, arbitrary formulation of parameters, intelligent energy analysis and energy saving management system, intelligent equipment service big data cloud platform, etc.

设备技术参数 EQUIPMENT TECHNICAL PARAMETERS

- 1、设备输入电压380V±10%，50Hz；±1Hz；
- 2、设备兼容线圈规格：20A、25A、32A、40A、50A、63A、80A。
- 3、设备兼容银点尺寸：3mm*3mm*0.8mm与4mm*4mm*0.8mm两种规格。
- 4、设备生产节拍：≤3秒/个。
- 5、设备具有OEE数据自动统计分析功能。
- 6、不同规格产品切换生产时，需要人工更换模具或夹具。
- 7、焊接时间：1~99S参数可任意设定。
- 8、设备具有故障报警、压力监测等报警显示功能。
- 9、中文版和英文版两种操作系统。
- 10、所有核心配件均采用意大利、瑞典、德国、日本、美国、台湾等不同国家和地区的进口配件。
- 11、设备可选配《智慧能源分析与节能管理系统》和《智能装备服务大数据云平台》等功能。
- 12、具有独立的自主知识产权

- 1 · Device input voltage 380V±10%, 50Hz; ±1Hz;
- 2 · Device compatible coil specifications: 20A, 25A, 32A, 40A, 50A, 63A, 80A.
- 3 · Equipment compatible with silver dot size: 3mm*3mm*0.8mm and 4mm*4mm*0.8mm two specifications.
- 4 · Equipment production beat: ≤ 3 seconds/each.
- 5 · Equipment with OEE data automatic statistical analysis function.
- 6 · When switching production between different specifications, manual replacement of molds or fixtures is required.
- 7 · Welding time: 1~99S parameters can be set arbitrarily.
- 8 · Equipment with alarm display function such as fault alarm and pressure monitoring.
- 9 · Two operating systems, Chinese and English.
- 10 · All core parts are imported from different countries and regions such as Italy, Sweden, Germany, Japan, USA, Taiwan, etc.
- 11 · The equipment can be equipped with optional functions such as "intelligent energy analysis and energy saving management system" and "intelligent equipment service big data cloud platform".
- 12 · With independent independent intellectual property rights



焊接类专用设备 WELDING SPECIAL EQUIPMENT

MCB微型断路器磁轭、银点、引弧角自动焊接设备 MCB miniature circuit breaker yoke, silver point, arc lead angle automatic welding equipment

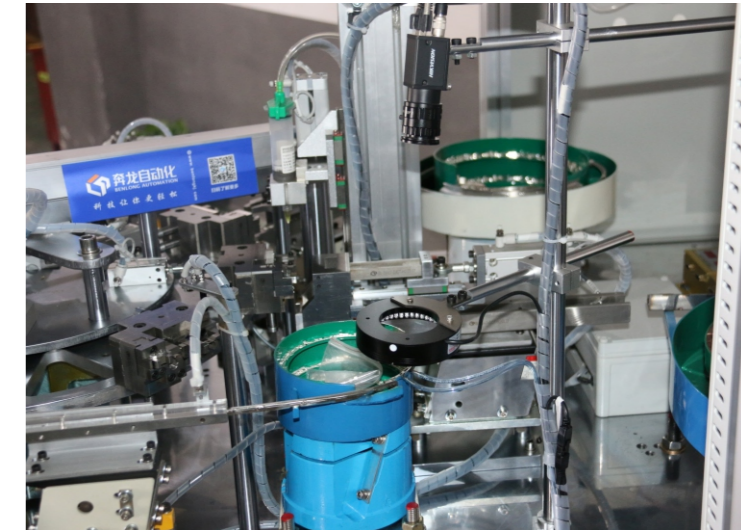
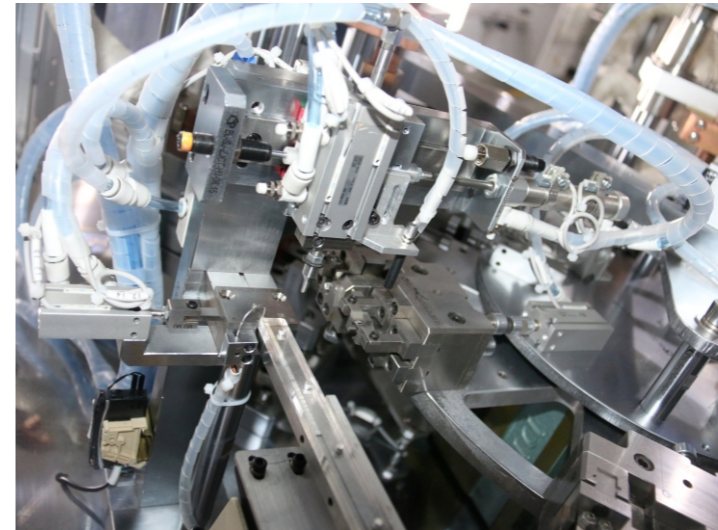
系统特点 SYSTEM FEATURES

采用多规格混合生产、自动化、信息化、模块化、柔性化、定制化、可视化、一键切换、远程维护设计、预警通知、评估报告、数据采集与处理、全局检测管理、设备全生命周期管理等。

Adopting multi-spec mixed production, automation, informatization, modularization, Flexibility, customization, Visualization, One-click switching, Remote maintenance design, Early warning notification, assessment reports, data collection and processing, Global detection management, Equipment lifecycle management, etc.



- 
自动化
Automation
- 
信息化
Informatization
- 
模块化
Modularity
- 
可视化
Visualization
- 
定制化
Customization
- 
柔性化
Flexibility
- 
云计算
Cloud Computing
- 
一键切换
One Click Switch
- 
远程维护
Remote Maintenance
- 
预警通知
Early Warning Notice
- 
评估报告
Evaluation Report
- 
数据采集
Data Acquisition



设备功能介绍 EQUIPMENT FUNCTION INTRODUCTION

具有磁轭、银点、引弧角自动焊接、加注助焊剂、银点供料、CCD检测、自动焊接、自动下料、不良品区分、缺料报警、焊接参数值任意设定、自动摆盘/计数、装袋、包装、机器人码垛、AGV物流等工序的在线监测、实时监控、质量溯源、关键元器件寿命监测、数据存储、MES系统与ERP系统联网、参数任意配方、智慧能源分析与节能管理系统、智能装备服务大数据云平台等功能。

It has the functions of online monitoring, real-time monitoring, quality traceability, key component life monitoring, data storage, MES system and ERP system networking, arbitrary recipe of parameters, intelligent energy analysis and energy saving management system, intelligent equipment service big data cloud platform, etc. for the processes of magnetic yoke, silver spot, automatic welding of lead arc angle, flux filling, silver spot feeding, CCD detection, automatic welding, automatic feeding, defective product differentiation, shortage alarm, welding parameter value arbitrary setting, automatic plate/counting, bagging, packaging, robot palletizing, AGV logistics, etc.

设备技术参数 EQUIPMENT TECHNICAL PARAMETERS

- 1、设备输入电压：380V±10%，50Hz；±1Hz；
- 2、设备兼容银点尺寸：3mm*3mm*0.8mm与4mm*4mm*0.8mm两种规格。
- 3、设备生产节拍：≤3秒/个。
- 4、设备具有OEE数据自动统计分析功能。
- 5、不同规格产品切换生产时，需要人工更换模具或夹具。
- 6、焊接时间：1~99S参数可任意设定。
- 7、设备具有故障报警、压力监测等报警显示功能。
- 8、中文版和英文版两种操作系统。
- 9、所有核心配件均采用意大利、瑞典、德国、日本、美国、台湾等不同国家和地区的进口配件。
- 10、设备可选配《智慧能源分析与节能管理系统》和《智能装备服务大数据云平台》等功能。
- 11、具有独立的自主知识产权

- 1 · Device input voltage: 380V±10%, 50Hz; ±1Hz;
- 2 · Equipment compatible with silver dot size: 3mm*3mm*0.8mm and 4mm*4mm*0.8mm two specifications.
- 3 · Equipment production beat: ≤ 3 seconds/pc.
- 4 · Equipment with OEE data automatic statistical analysis function.
- 5 · When switching production between different specifications, manual replacement of molds or fixtures is required.
- 6 · Welding time: 1~99S parameters can be set arbitrarily.
- 7 · Equipment with alarm display function such as fault alarm and pressure monitoring.
- 8 · Two operating systems, Chinese and English.
- 9 · All core parts are imported from different countries and regions such as Italy, Sweden, Germany, Japan, USA, Taiwan, etc.
- 10 · The equipment can be equipped with optional functions such as "intelligent energy analysis and energy saving management system" and "intelligent equipment service big data cloud platform".
- 11 · With independent independent intellectual property rights



焊接类专用设备 WELDING SPECIAL EQUIPMENT

MCB微型断路器双金、动触头、编织线自动焊接设备 MCB miniature circuit breaker double gold, dynamic contact, braided wire automatic welding equipment

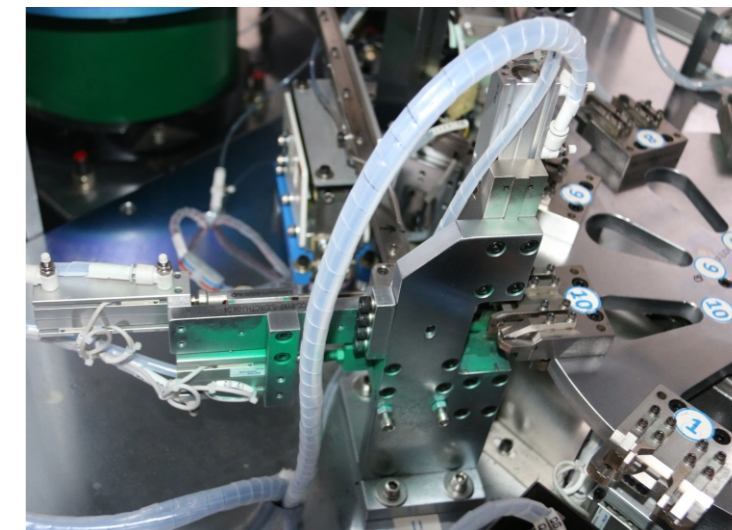
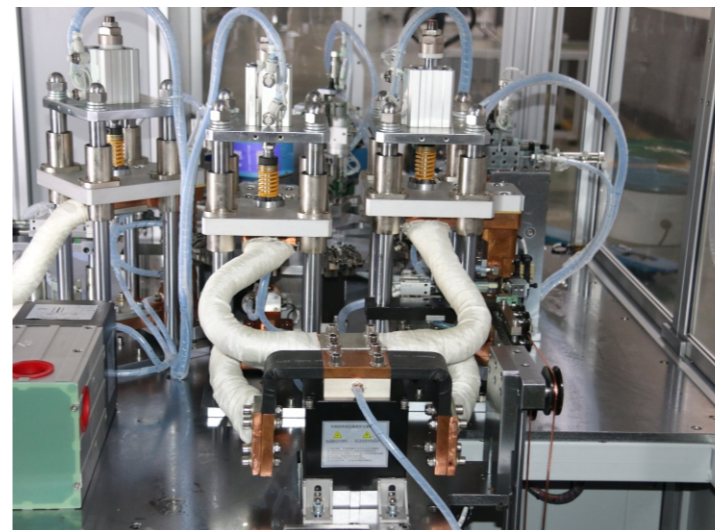
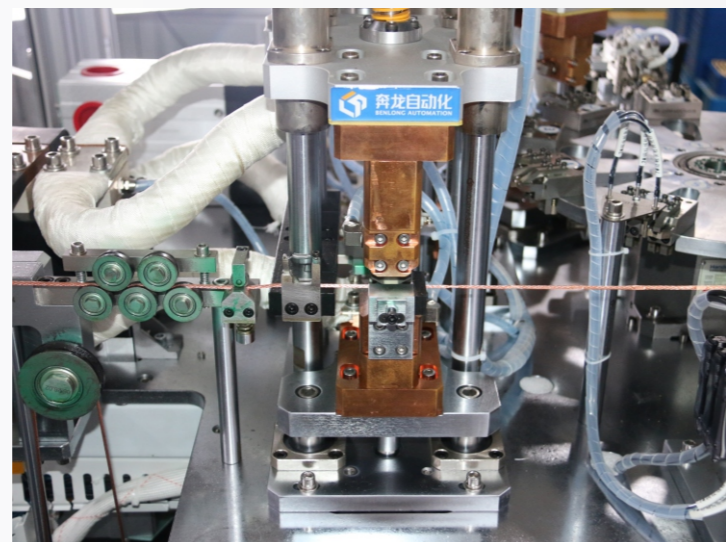
系统特点 SYSTEM FEATURES

采用多规格混合生产、自动化、信息化、模块化、柔性化、定制化、可视化、一键切换、远程维护设计、预警通知、评估报告、数据采集与处理、全局检测管理、设备全生命周期管理等。

Adopting multi-spec mixed production, automation, informatization, modularization, Flexibility, customization, Visualization, One-click switching, Remote maintenance design, Early warning notification, assessment reports, data collection and processing, Global detection management, Equipment lifecycle management, etc.



- 
自动化
Automation
- 
信息化
Informatization
- 
模块化
Modularity
- 
可视化
Visualization
- 
定制化
Customization
- 
柔性化
Flexibility
- 
云计算
Cloud Computing
- 
一键切换
One Click Switch
- 
远程维护
Remote Maintenance
- 
预警通知
Early Warning Notice
- 
评估报告
Evaluation Report
- 
数据采集
Data Acquisition



设备功能介绍 EQUIPMENT FUNCTION INTRODUCTION

具有编织线供料、编织线焊接、编织线剪切、动触头供料、双金供料、CCD检测、引弧片供料、接线板供料、连接片供料、助焊剂加注、自动焊接/5个焊点、触头绝缘壳装配、触头绝缘壳超声波焊接、自动下料、不良品区分、缺料报警、焊接参数值任意设定、自动摆盘/计数、装袋、包装、机器人码垛、AGV物流等工序的在线监测、实时监控、质量溯源、关键元器件寿命监测、数据存储、MES系统与ERP系统联网、参数任意配方、智慧能源分析与节能管理系统、智能装备服务大数据云平台等功能。

With braided wire feeding, braided wire welding, braided wire shearing, dynamic contact feeding, double gold feeding, CCD detection, arc-led sheet feeding, terminal board feeding, connection sheet feeding, flux filling, automatic welding/5 solder joints, contact insulation shell assembly, contact insulation shell ultrasonic welding, automatic feeding, defective product differentiation, lack of material alarm, welding parameter value arbitrary setting, automatic palletizing/counting, bagging, packaging, robot palletizing, AGV logistics and other processes of online monitoring, real-time monitoring, quality traceability, key components life monitoring, data storage, MES system and ERP system networking, arbitrary formulation of parameters, intelligent energy analysis and energy-saving management system, intelligent equipment services big data cloud platform and other functions.

设备技术参数 EQUIPMENT TECHNICAL PARAMETERS

- 1、设备输入电压：380V±10%，50Hz；±1Hz；
- 2、设备兼容铜编织导线：2mm²、3mm²、4mm²
- 3、设备生产节拍：≤3秒/个。
- 4、设备具有OEE数据自动统计分析功能。
- 5、双金属片兼容：1A~80A可根据产品型号选配。
- 6、不同规格产品切换生产时，需要人工更换模具或夹具。
- 7、焊接时间：1~99S参数可任意设定。
- 8、设备具有故障报警、压力监测等报警显示功能。
- 9、中文版和英文版两种操作系统。
- 10、所有核心配件均采用意大利、瑞典、德国、日本、美国、台湾等不同国家和地区的进口配件。
- 11、设备可选配《智慧能源分析与节能管理系统》和《智能装备服务大数据云平台》等功能。
- 12、具有独立的自主知识产权

- 1 · Device input voltage: 380V±10%, 50Hz; ±1Hz;
- 2 · Equipment compatible copper braided wire: 2mm², 3mm², 4mm²
- 3 · Equipment production beat: ≤ 3 seconds/pc.
- 4 · Equipment with OEE data automatic statistical analysis function
- 5 · Bimetal compatible: 1A~80A can be optional according to the product model.
- 6 · Manual change of mold or fixture is required when switching production for different specification products.
- 7 · Welding time: 1~99S parameters can be set arbitrarily.
- 8 · The equipment has alarm display function such as fault alarm and pressure monitoring.
- 9 · Two operating systems, Chinese and English.
- 10 · All core parts are imported from different countries and regions such as Italy, Sweden, Germany, Japan, USA, Taiwan, etc.
- 11 · The equipment can be equipped with optional functions such as "intelligent energy analysis and energy saving management system" and "intelligent equipment service big data cloud platform".
- 12 · With independent intellectual property rights



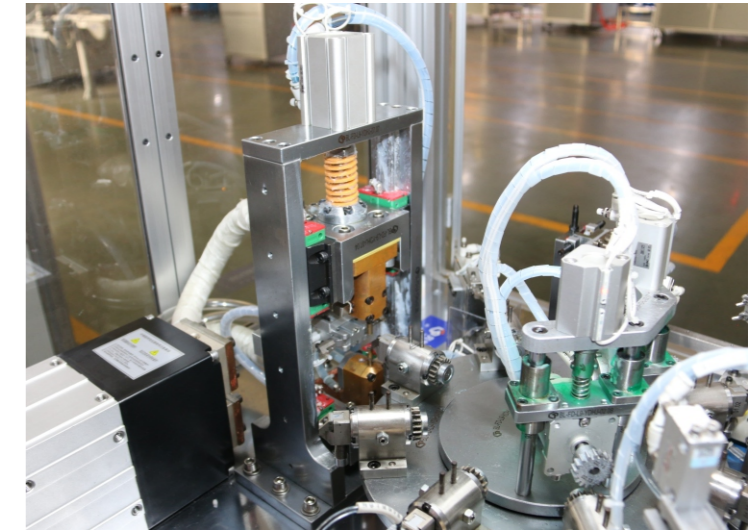
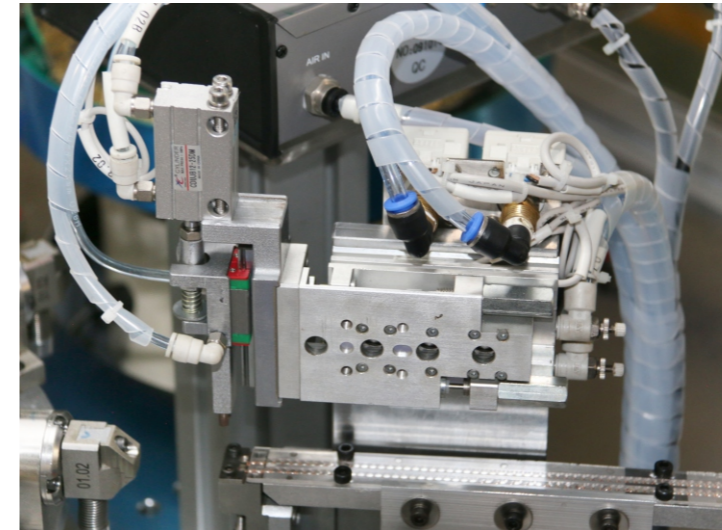
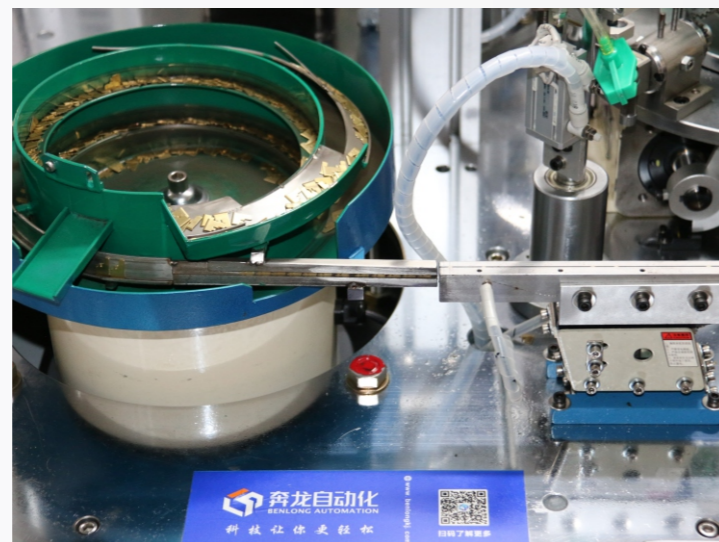
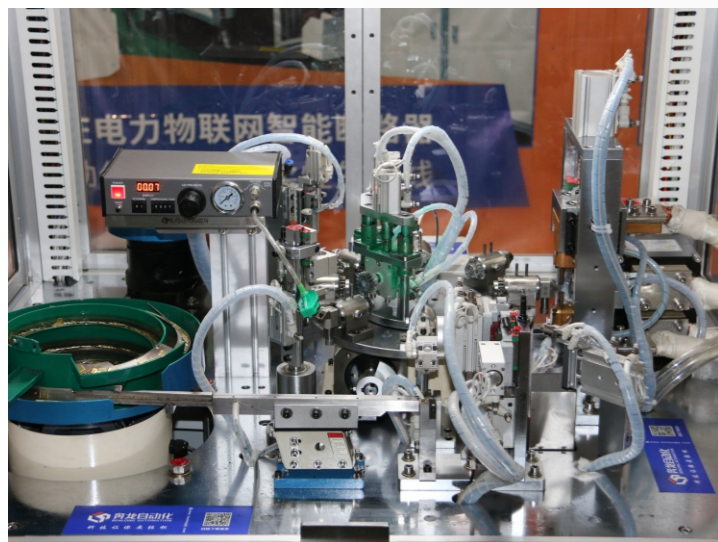
焊接类专用设备 WELDING SPECIAL EQUIPMENT

墙壁开关银点自动焊接设备 Wall switch silver point automatic welding equipment

系统特点 SYSTEM FEATURES

采用多规格混合生产、自动化、信息化、模块化、柔性化、定制化、可视化、一键切换、远程维护设计、预警通知、评估报告、数据采集与处理、全局检测管理、设备全生命周期管理等。

Adopting multi-spec mixed production, automation, informatization, modularization, Flexibility, customization, Visualization, One-click switching, Remote maintenance design, Early warning notification, assessment reports, data collection and processing, Global detection management, Equipment lifecycle management, etc.



设备功能介绍 EQUIPMENT FUNCTION INTRODUCTION

具有自动装配、加注焊接辅助材料、检测、焊接、不良品区分、包装、码垛、AGV物流、缺料报警等工序的装配、在线检测、焊接、实时监控、质量溯源、条码识别、元器件寿命监测、数据存储、MES系统与ERP系统联网、参数任意配方、智慧能源分析与节能管理系统、智能装备服务大数据云平台等功能。

With automatic assembly, filling welding auxiliary materials, testing, welding, defective product differentiation, packaging, palletizing, AGV logistics, lack of material alarm and other processes of assembly, online testing, welding, real-time monitoring, quality traceability, barcode identification, component life monitoring, data storage, MES system and ERP system networking, parameters arbitrary formula, intelligent energy analysis and energy-saving management system, intelligent equipment services big data cloud platform and other functions.

设备技术参数 EQUIPMENT TECHNICAL PARAMETERS

- 1、设备输入电压380V±10%，50Hz；±1Hz；
- 2、设备兼容性 & 生产节拍：可根据客户要求定做。
- 3、焊接方式：根据产品的不同生产工艺及要求，可以采用电阻焊接、中频焊接、高频感应焊接、激光焊接、气体保护焊接、锡焊、摩擦焊接、超声波焊接等方式实现。
- 4、焊接工艺：人工装配自动焊接或自动装配自动焊接两种模式可任意选配。
- 5、设备夹具可根据产品型号定做。
- 6、设备具有故障报警、压力监测等报警显示功能。
- 7、中文版和英文版两种操作系统。
- 8、所有核心配件均采用意大利、瑞典、德国、日本、美国、台湾等不同国家和地区的进口配件。
- 9、设备可选配《智慧能源分析与节能管理系统》和《智能装备服务大数据云平台》等功能。
- 10、具有独立的自主知识产权。

- 1 · Equipment input voltage 380V±10%, 50Hz; ±1Hz;
- 2 · Equipment compatibility and production beat: can be customized according to customer requirements.
- 3 · Welding mode: according to the different production process and requirements of the product, resistance welding, medium frequency welding, high frequency induction welding, laser welding, gas protection welding, tin welding, friction welding, ultrasonic welding, etc. can be used to achieve.
- 4 · Welding process: manual assembly automatic welding or automatic assembly automatic welding two modes can be optional.
- 5 · Equipment fixture can be customized according to the product model.
- 6 · Equipment with fault alarm, pressure monitoring and other alarm display functions.
- 7 · Two kinds of operating systems, Chinese and English.
- 8 · All core parts are imported from different countries and regions such as Italy, Sweden, Germany, Japan, USA, Taiwan, etc.
- 9 · The equipment can be equipped with optional functions such as "intelligent energy analysis and energy saving management system" and "intelligent equipment service big data cloud platform".
- 10 · With independent independent intellectual property rights.

